

## Laboratory

### Lancets

#### Allegiance



##### Infant Heel Warmer

The gentle warmth from our Infant Heel warmer can make baby's first blood sample a little easier. The warmer, available with or without tape, is a safe and comfortable way to increase capillary circulation on an infant's heel to aid in getting a good first stick. It reduces the need to pinch the heel to obtain blood, therefore lessening the possibility of sample dilution from tissue fluids. The single-patient-use warmer quickly achieves an optional temperature of 104oF (40oC) to safely warm the infant's heel. No cooling off period is required. The warmer's content's are certified Food Grade and nontoxic. There are no sharp edges or metal materials to harm the patient or caregiver, 25 warmers per box, four boxes (100 warmers) per case

BGH11460-010  
Infant Heel Warmer

#### BAYER



##### Glucolet 2 Automatic Lancing Device

Designed for obtaining capillary blood samples from the fingertip or heel

AME5976 10/bx,  
10bx/cs

##### Fingerstix Lancet

For use with Glucolet 2 automatic lancing device. Designed and sterilized to provide the user with a safe and easy method for obtaining blood. The lancets help prevent the user from accidental contact with the lancet point

AME5965 200/pkg,  
6bx/cs



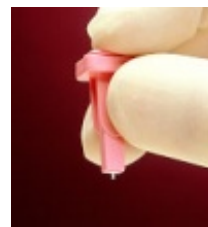
##### Microlet Fingertip Lancing Device

The uniquely designed Microlet Automatic Lancing Device is the

most comfortable and painless way to obtain capillary blood from the fingertips. The 25-gauge needle features a sharper angle and finer point, enabling a smoother entry than other, thicker needles. The Microlet's exclusive firing mechanism guides the lancet, preventing excess needle motion that can cause discomfort

AME6546 100/bx

#### Becton Dickinson



##### Microtainer safety Flow Lancets

No assembly or disassembly prevents injuries. Completely disposable eliminates. Cross contamination. Easy to use Pink Safety Flow Lancet is specifically designed for low blood volume when repetitive punctures are required

BDV366359 Pink,  
Blade 0.5mm W x 1.4mm  
D 50/bx, 500/cs

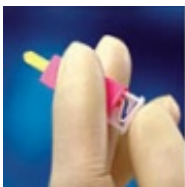
BDV366356 Green,  
Blade 1.0mm W x 1.4mm  
D 50/bx, 500/cs  
BDV366357 Blue,  
Blade 1.0mm W x 1.9mm  
D 50/bx, 500/cs  
BDV365759 Yellow,  
Blade 1.0mm W x 2.2mm  
D 50/bx, 500/cs

### Vacutainer Microlance lancet

Sterile, Single use  
BDV365752 2.4mm,  
Regular Point, H433,  
1000/bx, 10.000/cs  
BDV365753 2.4mm,  
Regular Point, Bulk  
Package, H433, 1000/bx,  
5000/cs  
BDV365755 4.85mm,  
Long Point, 1000/bx,  
10.000/cs

### Ultra-Fine II Lancet

325772 30g lancet,  
200/pk, 2400/cs  
325773 30g lancet,  
100/pk, 2400/cs



### Genie Lancet

#### Ease of use

Quick one step blade  
activation  
Self-contained, single-  
use, and supplies ready to  
use  
Full range of blade depths  
for sufficient blood  
volume in multiple  
sample requirements

### Advanced protection and safely

Automatic blade  
retraction minimizes the  
possibility of injury and  
reuse  
No loading or special  
blade preparation  
Rapid, precise, consistent  
incisions providing  
quality blood samples  
**Optimum patient comfort**  
One millisecond lancet  
penetration and retraction  
Ultra-sharp surgical  
stainless steel blades and  
needles  
200/bx, 200/cs

BDV366583 Needle,  
Orange (Single Drop),  
2.25mm, 23 Gauge  
BDV366582 Lancet,  
Blue (High Blood Flow),  
2.0mm deep, 1.5mm  
Long  
BDV366581 Lancet,  
green (medium to High  
Blood Flow), 1.5mm  
deep, 1.5mm long  
BDV366580 Lancet,  
pink (Low Blood Flow),  
1.0mm deep, 1.5mm long



### Quikheel Safety Lancet

A gentle, safe blood-  
sampling device for  
premature infants,  
newborns and babies, The  
BD Quikheel safety  
Lancet's advanced design  
technology reduces the

risk of injury (cuts or  
punctures) to the health  
care worker and provides  
a virtually pain-free  
incision

BDV368100 Quikheel  
Premie Lancet, 0.85mm,  
1.75mm, 50/bx, 200/cs  
BDV368101 Quikheel  
Infant Lancet, 1.0mm,  
2.50mm, 50/bx, 200/cs

## Chronimed

### Haemolance safety Lancets

Single use, disposable  
devices used to obtain a  
capillary drop of blood,  
lancet automatically  
retracts after use

CHM990300 21 gauge,  
150/bx

## Futura

The New Thinking Safety



### Gentle-let Lancets

Gentle-let lancets provide  
high quality, exceptional  
values and a full range of  
types/sizes for the  
individual needs of the  
patient. Also offered is  
the Gentle-lance Ipen  
device with 5 depth  
settings for optimum  
comfort

FTAH-3300 21 Gauge  
(med pt)  
Yellow/Universal Fit,  
200/bx  
FTAH-3400 21 Gauge  
(med pt), yellow/long-  
Body, 200/bx  
FTAH-3600 Orange  
Platforms, 3.0mm, 200/bx  
FTAH-4000 Gentle-  
lance Adjustable Device,  
5/cs

## Lifescan

### The Penlet Plus adjustable Blood Sampler

The Penlet Plus Adjustable Blood Sampler is less painful and easier to use. It reduces pain with precision punctures at any depth. The Penlet plus sampler replaces the widely used PENLET II sampler. Seven easy-to-dial depth settings, Comes complete with 25 ONE TOUCH, Fine Point Lancets for less painful testing

LIF010-356 Penlet Set  
with Lancets

### Unistik 2 disposable lancing devices

Disposable lancing devices are designed for safety and ease of use. Single-use design minimizes risk of accidental reuse. Lancet automatically retracts,

reducing risk of sharps injury. All-in-one design means no separate lancets, end caps or platforms

LIF010-404 deep  
Penetration  
LIF010-636 Regular  
Penetration

## ITC



### Tenderlett Lancets

Tenderlett finger incision device contains a surgical stainless steel blade that incises to a controlled, standardized depth. The Tenderlett device creates a small, shallow incision in the finger which cuts more of the capillary bed without cutting too deeply. Blood flows more freely providing a higher quality blood specimen. A permanently retracting blade reduces the risk of an accidental stick. Available in three depths to allow proper device selection for the appropriate patient population

INTTL100 Adult,  
1.75mm, Red, 100/bx,  
1200/cs

INTTL5000 Adult,  
1.75mm, Red, 100/ea,  
5000/cs  
INTTLJ100 Junior,  
1.25mm, Blue, 100/bx,  
1200/cs  
INTTLJ5000 Junior,  
1.25mm, blue, 100/ea,  
5000/cs



### Tenderfoot Lancet

Tenderfoot is a safe, effective method for obtaining blood samples from the heels of infants. A surgical stainless steel blade incises to a controlled, standardized depth and length above the pain fibers making the procedure virtually pain-free. Tenderfoot creates an incision allowing the blood to flow more freely reducing the need to squeeze the foot. A higher quality blood sample is collected and bruising is diminished. The blade permanently retracts after use providing an added factor of safety for the patient and medical professional

INTTF-50 Newborn,  
1.0mm, 50/pk

## Roche Diagnostics

### Accu-Check Safe-T-Pro lancet Device

Single use

RDI951 200/bx

**Accu-Check Soft Touch Lancet Device**

RDI585 100/bx  
RDI580 Device  
Dial, ea

**Accu-Check Softclix Lancet device**

11 depth settings, so you can adjust the lancet depth to match your skin type. Conventional spring-loaded lancet systems often penetrate too deeply with side-to-side movement that can cause painful dilation or tearing of skin tissue. The Accu-Check Softclix lancet that eliminates unnecessary pain and provides enough blood for accurate testing

RDI971 100/bx

**Centrifuges**

**Becton Dickinson**



**Clay Adams Compact II Centrifuge**

Designed especially for the small laboratory. Angle rotor accommodates 2ml – 15ml tubes. Speed fixed at approximately 3,200 RPM (approximately 1,315RCF). Attached durable cover with safely interlock switch. Cover seals to minimize aerosol emissions. 30-minute timer with “hold” position for continuous operation, Low temperature rise helps to protect specimen analytes. Blushless motor. Centrifuge base rests on three rubber suction feet for maximum stability. Compact, space-saving design (11”D x 15”H), 50 Hz. 220 volts

BDP420225 Adams Compact II Centrifuge



**Readacrit Centrifuge**

Direct reading system eliminates need for a separate reader, reduces tube hand handling. Accommodates size 75mm specially calibrated (Pre-Cal) capillary tubes. Use either finger puncture or venous

blood specimens. Five minutes, centrifugation cycle. Cast aluminum base, heavy gauge aluminum guard and “see-thru” plastic cover. White enamel. Magnifier mounted on a swivel. Shock mounted. Universal type, 110 to 115 Vac 50 to 60 Hz

BDP420591 Readacrit

**Urinalysis**

**Becton Dickinson**



**Sedi-Stain Urine Stain**

Concentrated for urine sediment examination. Provides optimum differentiation of blood cells, casts and other formed elements. Only minute quantity needed per examination. No diluting required. 10 Bottles/carton

BDP421570 12-1/2 ml Bottle with Dropper (Enough for 300 tests)  
BDP421571 30 ml Bottle with Dropper (Enough for 1,500 tests)

**Bayer**



**Clinitek 50 Urine Chemistry Analyzer**

Ease to use, compact, and lightweight. Seconds hands on time. Printed results include time and date stamp. Determines urine color 50-result memory for transfer to a computer

AME6516 Clinitek 50 urine Chemistry Analyzer  
**Clinitek 50 Accessories**  
AME5773 Thermal printer paper, 5rolls/pk



**Multistix 10 Sg Reagent Strips**

Dip and read test for glucose, bilirubin, Ketone, specific gravity, blood, pH, protein, urobilinogen, nitrate. Leukocytes in urine

AME2161 100/Bottle

**Combistix Reagent Strips**

Dip and read test for urinary protein, glucose, PH

AME2183 100/Bottle

**Diastix 100 Reagent Strips**

Dip and read for glucose in urine

AME2803 100/Bottle

**Hemastix 50 Reagent Strips**

Dip and read for blood in urine

AME2190 50/Bottle

**Hema-Combistix Reagent Strips**

Dip and read for urinary blood, protein, glucose PH

AME2182 100/Bottle

**Keto-Diastix Reagent Strips**

Dip and read for glucose and Ketone in urine

AME2882 100/Bottle

**Ketostix Reagent Strips**

Dip and read for Ketone in urine

AME2880 50/Bottle

AME2881 100/Bottle

**Multistix 9 Reagent Strips**

Dip and read test for glucose, bilirubin, Ketone, blood, PH, protein, urobilinogen, and nitrite, Leukocyte, in urine

AME2162 100/Bottle

**Multistix 8 Sg Reagent Strips**

Dip and read test for glucose, Ketone, specific gravity, blood, PH, protein, nitrite, leukocytes in urine.

AME2164 100/Bottle

**Multistix 7 Reagent Strips**

Dip and read test for glucose, Ketone, blood, PH, protein, nitrite, leukocytes in urine

AME2165 100/Bottle

**Uristix 4 Reagent Strips**

Dip and read test for protein, glucose, nitrite, and leukocytes in urine

AME2166 100/Bottle

**Clinitek Microalbumin Reagent Test Strips**

Reliable, semi-quantitative results with the Clinitek 50 or the Clinitek 100. The strip is read in one minute. Simultaneous measurement of albumin and creatinine levels, 25 strips/bottle

AME2083  
Microalbumin Reagent Test Strips

**Clinitek HCG Urine Test strips**



Fast, easy reliable results  
Compatible with the  
Clinitek 50 and Clinitek  
100 Urine Chemistry  
Analyzer. Test is CLIA  
waived when performed  
on the Clinitek 50 Urine  
Chemistry Analyzer.  
Detection: 25m IU  
HCG/ml-this level and  
higher will be identified  
as positive. Printed  
results. 25 strips/bottle

AME2044 Clinitek  
HCG urine test strips

### **Clinitest Reagent Tablets**

5-drop and 2-drop  
instructions and color  
chart, child-resistant foil,  
test for urine sugar

AME2126 100/Btl w/  
child Resist cap

### **Micro-Bumintest urinalysis Reagent tablet**

Tablet test for  
Microalbumin in urine

AME2229 20/pk,  
12/pk/cs

### **Ictotest Urinalysis reagent Tablet**

Test for Bilirubin in urine

AME2591 100/pk, 6  
pk/cs

### **Chek-Stix Urinalysis Control Strips**

5-drop and 2-drop  
instructions and color  
chart, child-resistant foil,  
test for urine sugar

AME1364 Positive &  
Negative, 25ea 6pk/cs  
AME1364 Positive,  
25pk, 6pk/cs

### **Acetest Urinalysis Reagent strip**

Tablet test for Ketone in  
urine

AME2381 100/pk,  
36pk/cs

### **Urine-Tek Plastic Disposable**

System includes tubes,  
plastic caps, adhesive  
labels, collection cups,  
and disposable tube  
holder

AME4202 100/pk,  
5pk/cs  
AME4204 Tubes,  
500/pk  
AME4205 Caps,  
500/pk, 6pk/cs

## **Roche Diagnostics**



### **Chemstrip 101 Urine Analyzer**

Chemstrip 101 delivers  
an affordable reliable  
alternative to visual  
urinalysis test strip

evaluation. With  
fundamental, easy-to-use  
features, Chemstrip 101  
keeps physician office  
lab, clinic cost effective

RDS1904957 Chemstrip  
Analyzer

### **Accessories**

RDS418007 Chemstrip  
Calibration Strips  
RDS1906020 Chemstrip  
101 Thermal paper  
RDS1248693 Chemstrip  
101 keyboard  
RDS2031108 Chemstrip  
101 barcode Reader  
RDS2031094 Chemstrip  
101 barcode Reader cable



### **Chemstrip Urine Test Strips**

Chemstrip Urine Test  
Strips are multiparameter  
visual reagent strips that  
are used to measure  
certain constituents in the  
urine. These  
measurements are useful  
in the evaluation of renal,  
urinary and metabolic  
disorders. Chemstrip  
Urine Test Strips are  
clinically proven to resist  
interference by ascorbic  
acid. All reagent pads  
may be simultaneously  
read between 1 and 2  
minutes

RDS417145 Chemstrip  
10SG  
RDS417109 Chemstrip 9  
RDS417126 Chemstrip 7  
RDS417135 Chemstrip 6  
RDS417144 Chemstrip 4  
OB  
RDS200743 Chemstrip 2  
GP  
RDS417152 Chemstrip 2  
LN

## HYCOR



### Urinals controls & Supplies

KOVA multi-purpose urine controls, KOVA-Trol and KOVA System components, including break-resistant Super Tubes and caps, have been designed to standardize microscopic urinalysis testing in the laboratory. Liqua-Trol is a liquid control for urine dipstick chemistries

HYC87120 Liqua-Trol, Level I (Abnormal)  
Level II (Normal with HCG)



HYC87329 KOVA-Trol I, without UB values  
HYC87334 KOVA-Trol I, with UB values

HYC87331 KOVA-Trol III, normal with HCG



HYC87135 KOVA Caps  
HYC87137 KOVA Super Tubes  
HYC87138 KOVA Economy tubes

## Wampole Laboratories



### Bacturcult Bacterial Cultured Media

For urine collection, bacteriuria screening (bacterial count), and presumptive bacterial identification (color change)

CW55D1 10 Test/bx  
CW55D5 100 Test/bx

## LifeSign

### Uricult Urine Culture System

Meets all your testing and regulatory needs. Dip or apply as few as three drops of urine to each URICULT Culture – Paddle side. Incubate at

34o – 38oC for 18 to 24 hours. Compare to package insert or Reference Chart (provided separately) for colony counts and presumptive pathogen identification. Cled Agar / EMB Agar

MTC1000 10/box

## Allegiance



### S/P Specimen Containers

Our 4-oz. break-resistant polypropylene containers are ideal for liquid and solid specimens. The plastic screw-top cap provides a leak-resistant seal. Graduated to help ensure accurate measurements. A pressure-sensitive ID label is provided with Container C8827-4

BGHC8827-4 Sterile inner surface, individually wrapped, 100/cs

## Vollrath



### **Sterile specimen Containers**

Vollrath Group's 4oz. specimen container features full-turn screw thread, provides excellent leak-resistant seal tough, durable inert material. Integrity seal includes patient ID label on body Leak-resistant seal meets NCCLS specimen handling guidelines for primary containers. (M29-P, Vol7, No.9). Integrity seal indicates internal sterility when intact. Cup is graduated in both ounces and ml's on two sides

VOL01055 100/cs



### **Specimen Containers without Cap**

Vollrath Group's non-sterile specimen container without cap is graduated for easy measuring in cc and oz

VOL02053 4.5oz.  
Polypropylene 25/sleeve  
VOL02263 6oz.  
Styrene, 25/sleeve, 500/cs

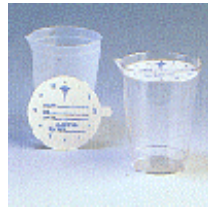
VOL02265 6oz.  
Polypropylene, 25/sleeve



### **Specimen Containers with Cap**

Vollrath Group's screw Cap Specimen Containers are graduated for easy measuring in cc and oz. Area on white cap allows for patient identification. Caps are sleeved and cups are stacked

VOL02051 4.5oz  
Polypropylene, 25/Sleeve  
VOL02052 4.5oz.  
Styrene, 25/Sleeve,  
500/cs



### **Specimen Container With Paper Lid**

Vollrath Group's specimen container with paper lid is a translucent container that resists breakage while allowing for clear viewing of sample. See-through graduated container for easy measuring in cc and oz. Graduated from 1/2 oz to 6-1/2oz in one-half ounce increments and from 10cc to 190cc in 10cc increments. There is space available for

writing on the lid for name, doctor, date, am/pm and room number

VOL02266 6oz.  
Polypropylene, 25/sleeve

## **Premium Plastics**



### **Specimen Containers**

These 6.5oz. Containers are available in polystyrene and polypropylene. Polystyrene enhances clarity and polypropylene improves durability. Both options come with a convenient pour spout for simplified specimen retrieval. Each container is graduated in 10cc (ml) and .5-ounce increments up to 6.5 ounces. Printed lids can be purchased separately or with specimen containers

### **Polypropylene**

PP4629 Specimen Container w/o lid, 20/bg, 25/bg/cs

PP4646 Specimen Container w/printed paper Lid, 20/bg, 25bg/cs

### **Polystyrene**

PP4630 Specimen Container w/o lid, 20/bg, 25bg/cs



PP4647 Specimen Container w/printed paper lid, 20/bg, 25bg/cs

### **Specimen Containers w/ Liqua Guard lid**

Available with several packaging options, each specimen container is marked in 10cc (ml) and 25-ounce increments up to 120cc. Containers are available with Liqua Guard lids, ensuring leak resistance and making them perfect for transport. Each Liqua Guard lid engraved and provides ample space for writing the date, name, and doctor and room number. Depending on the package, lids can be purchased separately or with the containers

PP4651 4oz. specimen container w/o lid, 20/bg, 25bg/cs  
PP4653 4oz. Specimen Container w/Liqua Guard lid (turquoise), 20/bg, 25/bg/cs



### **Specimen Containers w/ Liqua Guard Lid and Label**

4 oz. sterile specimen container w/ gray Liqua lid & label, each

specimen container is marked in 10cc (ml) and .25oz Increments up to 120cc's Liqua Guard lids ensure leak resistance and make them perfect for transport. Each Liqua Guard lid is engraved and provides ample space for writing the date, name, doctor and room number, polybagged

PP4928 4oz. specimen container w/Gray Liqua Guard lid & Label, 100/cs

## **URINE CONTROLS**

**Hematronix, Inc.**



### **Quantify Urine Control Systems**

Quantify urine control reports have two distinctive features-color graphics and peer group accuracy comparison the familiar colors you see in the dipstick report and the microscopic report includes computer-generated representations of RBC, WBC and Crystal responses, each report shows you quickly how lab compares to your peer group

**Bi Level**  
HTX901 Quantify Urine Dipstick Control  
HTX902 Quantify Plus Urine Dipstick and Microscopic Control  
**Level I**  
HTX903 Quantify Micro Control System  
**Level II**  
HTX904 Quantify Micro Control Systems

## **Quantimetrix**



### **Microbumin Control**

A liquid, human urine-based control suitable for most Microalbumin test methods contains normal levels of creatinine for albumin: creatinine ratios. 36 month unopened and 6 months open refrigerated stability  
QTX1250-01  
Microbumin 2 level Set  
10 x 7ml



### **Dip and Spin Combination Urine Dipstick and Microscopics Control**

A combination liquid, human urine based product for dipstick and microscopic quality control. Values are

supplied for human red and white blood cells and crystals plus all 10 dipstick assays. 18 months unopened and open vial refrigerated stability

QTX1470-01 Dip & Spin 2 Level set 4 x 120ml



**The Dipper Urine Dipstick Control**

This liquid control validates visual and instrumental dipstick readings by immersing dipstick in the sample. Values for all 10 dipstick assays. 18 months unopened, 3 months open vial, refrigerated stability

QTX1440-01 The Dipper 2 level Set 6 x 15ml



**The Dropper Urine Dipstick Control**

This control validates urine dipstick readings by applying the control directly onto the dipstick.

Values for all 10 dipstick assays. 18 months unopened, 3 months open vial, refrigerated stability

QTX1440-02 The Dropper 2 Level Set 4 x 25ml



**The Dropper Plus Point of Care Urine Dipstick Control**

A liquid, human urine-based POC dipstick control with unique one month room temperature stability, values for all 10 dipstick assays and HCG. 18 months unopened and open vial refrigerated stability

QTX1440-04 The Dropper Plus Point-of Care 2 level set 10 x 5ml



**Quan Tscopics Urine Microscopics Control**

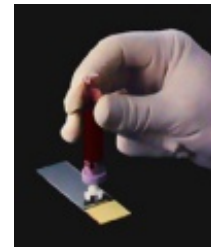
This cost-effective control validates the processing/centrifugation of urine before

microscopic evaluation. Contains red and white stabilized human blood cells and crystals, 24 months unopened and open vial refrigerated stability

QTX1481-41 Quan Tscopics 1 4 x 120ml  
QTX1482-41 Quan Tscopics Level 1 4 x 120ml

**Blood Collection**

**Alpha Scientific Corporation**



**Diff-Safe Blood Dispenser**

Eliminates the need to remove the stopper of a tube of blood when making a smear, eliminating the release of airborne pathogens and the use of messy sticks. Simple to use, Compatible with Vacutainer and Hemogard brand tubes

ASC101 100pc/bg, 100bg/bx, 10/bx/cs

# Becton Dickinson



## Vacutainer Sterile Chemistry Tubes

A comprehensive line of evacuated blood collection tubes featuring a wide choice of tube sizes, draw, and approved formulations for chemistry, hematology coagulation studies, special procedures and blood banking. All are sterile. Prelabeled. Tubes available plain or with additives. Some available with the new Hemogard closure, a plastic shield that protects you from exposure when handling blood specimens

### Glass whole Blood Tube, Conventional Closure, Paper Label, 100/bx, 1000/cs

BDV364606 16 x  
100mm x 8.5ml, yellow,  
Additive: ACD solution  
A of trisodium citrate,  
22.0g/L, citric acid,  
8.0g/L, and dextrose 24.5  
g/L, 1.5ml  
BDV366385 10.25 x  
64mm x 3.0ml, Lavender,  
Additive, K3EDTA 7.5%  
solution, 0.068ml, 5.1mg  
BDV366405 13 x  
75mm x 2.5ml, lavender,

Additive, K3EDTA 7.5%  
solution, 0.061ml, 4.6mg  
BDV366450 13 100mm  
x 7.0ml, Lavender,  
additive, K3EDTA 15%  
solution, 0.081ml,  
12.15mg  
BDV366452 13 x  
75mm x 5.0ml, Lavender,  
Additive: K3EDTA 15%  
solution, 0.057ml,  
8.55mg  
BDV366454 15 x  
75mm x 7.0ml, Lavender,  
Additive, K3EDTA 15%  
solution, 0.081ml,  
12.15mg

### Glass Whole Blood Tube, Hemogard closure, paper Label, 100/bx, 1000/cs

BDV367653 13 x  
75mm x 5.0ml, Lavender,  
Additive, K3EDTA 15%  
solution, 0.056ml, 8.4mg  
BDV367661 13 x  
75mm x 3.0ml, Lavender,  
Additive, K3EDTA 7.5%  
solution, 0.073ml, 5.5mg  
BDV367662 13 x  
75mm x 5.0ml, Lavender,  
Additive, K3EDTA 15%  
solution, 0.056ml, 8.4mg  
BDV367665 13 x  
100mm x 7.0ml,  
Lavender, Additive,  
K3EDTA 15% solution,  
0.081ml, 12.15mg  
BDV369651 13 x  
75mm x 2.0ml, Lavender,  
additive, liquid K3EDTA  
7.5% solution 0.048ml,  
3.6mg

### Glass serum Tube, Conventional Closure,

### paper Label, 100/bx, 1000/cs

BDV366381 10.25 x  
64mm x 3.0ml, Red, No  
additive, silicone coated  
BDV366430 16 x  
100mm x 10.0ml, Red,  
No additive, silicone  
coated  
BDV366431 13 x  
100mm x 7.0ml, Red, No  
additive, silicone coated  
BDV366432 15 x  
125mm x 15.0ml, Red,  
No additive, silicone  
coated  
BDV366434 13 x  
75mm x 5.0ml, Red, No  
additive, silicone coated  
BDV366490 10.25 x  
82mm x 4.0ml, Red, No  
additive, silicone coated  
BDV366509 16 x  
75mm x 6.0ml, Red/Grey,  
Additive, Polymer gel  
and clot activator  
BDV366510 16 x  
100mm x 9.5ml,  
Red/Grey, Additive,  
Polymer gel and clot  
activator  
BDV366511 16 x  
125mm x 13.0ml,  
Red/Grey, Additive,  
Polymer gel and clot  
activator  
BDV366514 13 x  
75mm x 4.0ml, Red/Grey,  
Additive, Polymer gel  
and clot activator  
BDV366596 16 x  
100mm x 8.3ml,  
Red/Grey, Additive,  
Polymer gel and clot  
activator

**Glass serum Tube,  
Hemogard closure, paper  
label, 100/bx, 1000/cs.**

BDV369615 13 x  
100mm x 7.0ml, Red, No  
additive, silicone coated  
BDV369783 13 x  
75mm x 4.0ml, Gold,  
additive, Clot activator  
and Gel

BDV369784 13 x  
100mm x 6.0ml, Gold,  
additive, Clot activator  
and Gel

**Glass Plasma tube,  
Conventional Closure,  
Paper label, 100/bx,  
1000/cs**

BDV366387 10.25 x  
64mm x 3.0ml, Green,  
Additive, Sodium,  
heparin (freeze-dried), 45  
USP units

BDV366388 10.25 x  
64mm x 3.0ml, Green,  
Additive, Lithium,  
heparin (freeze-dried), 45  
USP units

BDV366393 10.25 x  
64mm x 2.7ml, Lt. Blue,  
Additive, Citrate solution,  
0.3ml, sodium citrate,  
7.41mg, citric acid,  
1.32mg

BDV366395 10.25 x  
64mm x 2.7ml, Lt. Blue,  
Additive, Buffered  
sodium citrate (equiv. To  
3.8% sodium citrate)

BDV366415 13 x  
75mm x 4.5ml, Lt. Blue,  
additive, Citrate solution,  
0.5ml, Sodium citrate,  
12.35mg, Citric acid,  
2.21mg (Equiv to 3.0%  
Sodium citrate)

BDV366418 13 x  
75mm x 4.5ml, Lt. Blue,  
Additive, Buffered  
sodium citrate (equiv. To  
3.8% sodium citrate)

BDV366465 13 x  
100mm x 4.0ml, Black,  
additive, Buffered sodium  
citrate (equiv. To 3.8%  
sodium citrate)

BDV366470 13 x 100 x  
7.0ml, Grey, Additive,  
potassium oxalate, 14mg,  
sodium fluoride, 17.5mg

BDV366471 13 x  
75mm x 5.0ml, Grey,  
Additive, Potassium  
oxalate, 10mg, sodium  
fluoride, 12.5mg

BDV366480 16 x  
100mm x 10.0ml, Green,  
additive, sodium, heparin  
(freeze-dried), 143 USP  
units

BDV366481 13 x  
75mm x 5.0ml, Green,  
additive, sodium heparin  
(freeze-dried), 72 USP  
units

BDV366485 13 x  
75mm x 5.0ml, Green,  
additive, Lithium heparin  
(freeze-dried), 72 USP  
units

BDV366595 13 x  
100mm x 6.0ml,  
Green/Grey additive,  
polymer gel and lithium  
heparin

BDV366672 16 x  
100mm x 9.5ml,  
Green/Grey, additive  
Polymer gel and lithium  
heparin

**Glass Plasma Tube,  
Hemogard closure, paper  
Label, 100/bx, 1000/cs**

BDV367676 13 x  
100mm x 7.0ml, Green,  
additive, sodium heparin  
(freeze-dried), 100 USP  
units

BDV367683 13 x  
75mm x 5.0ml, Green,  
additive, Lithium heparin  
(freeze-dried), 72 USP  
units

BDV367686 13 x  
100mm x 7.0ml, Green,  
additive, Lithium heparin  
(freeze-dried), 100 USP  
units

BDV369704 13 x  
75mm x 4.5ml, Lt. Blue,  
additive, Buffered sodium  
citrate (equiv to 3.8%  
sodium citrate) .129M –  
Silicon zed Interior

BDV369714 13 x  
75mm x 4.5ml, Lt. Blue,  
Additive, 0.5ml, Sodium  
citrate, 12.35mg (equiv  
3.2% sodium citrate)

BDV369794 13 x  
100mm x 6.0ml, Lt.  
Green, additive, Polymer  
gel and lithium



**BD Vacutainer Plus  
Plastic Tubes**

**See-Thru label**

BDV367812 13mm x  
75mm, 4.0ml, Clot  
Activator

BDV367813 13mm x  
100mm, 4.0ml, Clot  
Activator

BDV367814 13mm x 100mm, 5.0ml, Clot Activator  
 BDV367815 13mm x 100mm, 6.0ml, Clot Activator  
 BDV367819 13mm x 100mm, 6.0ml, Clot Activator  
 BDV367820 16mm x 100mm, 10.0ml  
 BDV367841 13mm x 75mm, 2.0ml, K2EDTA  
 BDV367842 13mm x 75mm, 2.0ml, K2EDTA  
 BDV367859 13mm x 75mm, 3.0ml, K2EDTA  
 BDV367862 13mm x 75mm, 4.0ml, K2EDTA  
 BDV367871 13mm x 75mm, 4.0ml, Na Heparin  
 BDV367884 13mm x 75mm, 4.0ml, Na Heparin  
 BDV367886 13mm x 100mm, 6.0ml, Li Heparin  
 BDV367889 13mm x 100mm, 6.0ml, Li Heparin  
 BDV367921 13mm x 75mm, 2.0ml, Pot Ox-Sod FI  
 BDV367922 13mm x 75mm, 4.0ml, Pot Ox-Sod FI  
 BDV367925 13mm x 100mm, 6.0ml, Pot Ox-Sod FI  
 BDV367960 13mm x 75mm, 3.0ml, Gel/Li Heparin  
 BDV367962 13mm x 100mm, 4.5ml, Gel/Li Heparin  
 BDV367974 16mm x 100mm, 6.0ml, Silica/Gel

BDV367975 16mm x 100mm, 7.0ml, Silica/Gel  
 BDV367976 16mm x 100mm, 7.0ml, Silica/Gel  
 BDV367977 13mm x 100mm, 4.0ml, Silica/Gel  
 BDV367985 16mm x 125mm, 10.0ml, Silica/Gel  
 BDV367989 13mm x 100mm, 5.0ml, Silica/Gel  
 BDV367991 16mm x 100mm, 8.5ml, Silica/Gel

**Vacutainer Blood Collection Sets**

BDV367250 21 x 3/4 12" tube  
 BDV367251 21 x 3/4 12" tube  
 BDV367252 23 x 3/4 12" tube  
 BDV367253 23 x 3/4 12" tube  
 BDV367254 25 x 3/4 12" tube  
 BDV367255 25 x 3/4 12" tube  
 BDV367290 Luer adapter



**Vacutainer Safety-Lok Blood Collection Set**

The safety-Lok shield reduces needle stick risk throughout the hospital. After use, needle can be easily and completely retracted into the protective shield and securely locked in place. New, larger wing size

permits improved positioning during use. Blood flashback is seen clearly through translucent shield. Convenient, integrated multiple-sample luer adapter allows specimen collection from a "closed System". 3/4" length

BDV367281 With Luer, 21G 3/4in, 12in. Tube, 50/bx, 200/cs  
 BDV367283 With Luer, 23G 3/4in, 12in. Tube, 50/bx, 200/cs  
 BDV367285 With Luer, 25G 3/4in, 12in. Tube, 50/bx, 200/cs  
 BDV367287 With Luer, 21G 3/4in, 7in. Tube, 50/bx, 200/cs  
 BDV367292 With Luer, 23G 3/4in, 7in. Tube, 50/bx, 200/cs  
 BDV367294 With Luer, 25G 3/4in, 7in. Tube, 50/bx, 200/cs  
 BDV367296 Without Luer, 21G 3/4in, 12in. Tube, 50/bx, 200/cs  
 BDV367297 Without Luer, 23G 3/4in, 12in. Tube, 50/bx, 200/cs  
 BDV367298 Without Luer, 25G 3/4in, 12in. Tube, 50/bx, 200/cs

**SARSTEDT**

**Microvette CB 300 Capillary Blood Collection System**

The Sarstedt Microvette CB 300 is a capillary



collection system for up to 300 ul of blood. Due to its unique design, the CB300 also acts as a centrifuge tube or a primary tube and is compatible with certain chemistry analyzers. The CB 300 is available with a range of preparations, including amber tubes for the determination of light sensitive analytes

SAR16.444.300  
EDTA

## **Futura**

The New Thinking Safety



### **Pro-Ject Blood Needle Holder**

Pro-ject needle holders provide a safe and economical mechanism for the disposal of contaminated blood collection needles, Easy one-handed procedure. No need to recap or unscrew from holder

FTAPJ200-10 10/box  
FTAOJ200-25 25/box  
FTAPJ200-250  
250/bx  
FTAPJ200-10H For  
use w/ Hemogard 10/bx

FTAPJ200-25H For  
use w/ Hemogard, 25/box  
FTAPJ200-250H For  
use w/ Hemogard, 250/bx

## **Graham-Field**



### **Grafkette Tourniquet**

Pinchless, flat rubber band with a Velcro-type closure provides venous and arterial constriction. Does not contain latex

GF1806 Adult, 14-  
1/2" x 1"



### **Velcro-Type Tourniquet**

Nylon band threads through plastic 'D' buckle for an effective, easily applied tourniquet. Washable and autoclavable

GF1802 Adult, 16"  
x 1"

### **Disposable Tourniquet**

Smooth latex disposable is easy to apply and release

GF4109-1 1" x 18",  
250/bx

## **GRAHAM Professional**

### **Latex-Free Tourniquet**

A 100% latex-free tourniquet that protects both patients and healthcare personnel from the dangers of latex allergies, this tourniquet performs all the functions of the standard latex tourniquet but eliminates the possibility of allergic reaction. This tourniquet is strong, with superior elasticity and tearresistence for maximum performance

GRM36647 Latex-Free  
Tourniquet, 1" x 18",  
1000/cs (bulk)

## **Becton Dickinson**

### **Vacutainer Stretch latex Free Tourniquet**

Same elasticity as latex, Standard tourniquet size, convenient, dispenser box Vanilla scented

BDV367203 25/bx,  
500/cs

## **RAM Scientific**



**Safe-T-Fill Capillary Blood Collection System**

Excellent Choice for Hematology, chemistry, and lead Testing. No mess, easy-to-use, 100% plastic and completely assembled. For easy, fast, and clean blood sample collection with capillary action, the exclusive SAFE-T-FILL plastic capillary provides the action of glass without the risks associated with the use of glass. Safer blood sample collection because blood flows directly to the bottom of the closed tube

EDTA 9(purple top) is an excellent choice for hematology and lead testing

RAM076011 125pul, 50/pkg, 10/cs  
RAM077051 200pul, 50pkg, 10/cs

**EXEL**



**Pediatric Scalp Vein Set**

Latex-free, sterile, flexible wings, 12” tubing, color coded for easy identification, individually packaged, thin, stainless steel cannula, siliconized for easy insertion

- EXL26704 21G x ¾, 500/cs
- EXL26706 23G x ¾, 500/cs
- EXL26708 25G x ¾, 500/cs



**Blood Draw Set**

Latex-free, sterile, individually packaged, flexible wings hold needle in position after venipuncture, color coded wings for easier identification

- EXL26766 23G x ¾, 200/cs

**Proficiency Tests**

**American Proficiency Institute**

**Proficiency Testing**  
Proficiency Testing (PT) is a type of external

quality control. The practice of testing unknown specimens from an outside source provides an additional means to assure quality laboratory testing results. Although most labs perform daily internal quality control on samples with known values, external quality control provides important comparisons to determine the accuracy of your testing procedures. The purpose of proficiency testing is to verify that the performance of each test site is in line with others performing the same analysis. Every four months, the PT provider sends test samples to their subscribers. The samples, whose expected values are unknown to the subscribers, are run by the lab staff who return their results to the PT provider. The results are reviewed to determine whether each participant passes or fails performance levels established by federal and state agencies. CLIA 88 stipulates that, for regulated analytes, everyone must test 5 specimens per shipment. PT providers are required to report test event and cumulative performance to state health

departments and the federal government

**Proficiency Testing**

API324 FULLYR Affirm VP III

API122 FULLYR Chemistry 3

API217 FULLYR Coagulation

API127 FULLYR Glycochemoglobin

API420 FULLYR H Pylori Antibody

API221 FULLYR Hematology

API133 FULLYR Immunoassay

API410 FULLYR Infectious Mononucleosis

API233 FULLYR Provider Performed

Microscopy

API222 FULLYR QBC Hematology

API312 FULLYR Rapid Group A Strep Antigen

API409 FULLYR Serum HCG

API232 FULLYR Urinalysis, HCG & Fecal

Occult Blood

API234 FULLYR Proficiency Testing Urine

Sediment (Microscopic)

**Specimen Collection/ Containers**

**BIRCHWOOD**



**Cytette Endocervical Sampling Brush**

Tapered brush head simplifies introduction into stenotic cervixes. Soft nylon bristles increase cellular yield and improve specimen quality. 7" serrated handle for easy rotation

BIR90-0100-01  
100/tray, 10 trays/cs

**WALLACH**



**Endocell Endometrial Cell sampler**

Disposable Endometrial cell sampler offers simplicity, safety and economy to the screening process for Endometrial carcinoma and precancerous conditions. Excellent monitor for effects of hormonal therapy and valuable for fertility problems, thin flexible device offers patient comfort

WSD908013 20/bx,  
10bx/cs



**Papette Cervical Cell Collector**

Simplified one-step cervical cell collector for pap smears. Used with conventional slide as well as fluid based thin layer technology. Gentle round bristles reduce bleeding. Full spectrum sample includes the transformation zone

WSD908003 100/pk, 10 pk/bx

**Busse**

**Hospital Disposable**



**Sterile Mucus Specimen Traps**

A simple yet efficient way to collect specimens using any suction pump or device two see-through plastic container sizes, 40cc and 80cc, with gradations clearly marked. Disposable adaptor prevents contamination from non-sterile suction tube.

Screw-on cap protects lips – helps maintain sterile pouring surface. Collapse-proof, 5” long heavy wall non-latex tubing, each packed sterile, in easy-to-peel envelope that assures aseptic handling. Write-on bottle

BUS406 40cc,  
24/carton

## Premium Plastics

### Laboratory/Stool Specimen Container

Perfect for handling, containing, and transporting specimens, these 8oz containers come with leak resistant, snap-on lids. Each lid is printed and provides ample space for writing pertinent specimen information

PP4670 10/bg,  
25bg/cs

### Specimen Collection Container (24 Hour)

Ideal for collecting specimens over a 24 hours period, these wide mouth bottles facilitate the addition and retrieval of specimens. A special gasketed lid enhances the container’s leak resistance and ensures safety during transport. Containers are available

in a translucent white or an opaque amber color. The amber containers are ideal for protecting light sensitive specimens. Labels are provided for proper specimen identification, and containers are graduated in 100ml increments up to 3000 ml’s

PP4711 40/cs

## DISPOSABLES

## Becton Dickinson

### Sedi-Cal centrifuge Tubes

Polystyrene tubes with caps, 4ml capacity. For use with MP Readacrit Centrifuge No. 0593 Disposable 16.5mm O.D. x 52mm long

BDP420597 100/bx,  
10bxs/cs



### SurePrep Capillary Tubes

With its unique self-sealing plug and multilayered MYLAR wrap, SurePrep reduces exposure to HIV, HBV and other blood borne pathogens. Unlike conventional sealing

capillary tubes SurePrep seals automatically when the blood sample touches the self-sealing plug. With SurePrep, specimen collection has never been easier or safer, simply fill the tube, then hold vertically, centrifuge and read. Even in the event of accidental breaks, the protective MYLAR wrap helps contain the blood and minimizes exposure to glass fragments

**Plain, 100 tubes/vial**  
BDP420314 200 tubes

**Heparinized, 100 tubes/vial**  
BDP420316 200 tubes  
BDP420317 1000 tubes

**Pre calibrated, for use with Readacrit and Triac Centrifuges, 100 tubes/vial**  
BDP420318 200 tubes

### BD Vacutainer Plastic clad micro-Hematocrit Tubes

BD plastic-coated micro-hematocrit capillary tubes feature safety engineering to help protect health care workers from accidental injury during some of the most common medical procedures. Each BD plastic-coated micro-hematocrit is encased in a film of mylar, so thin that it does not interfere with the accuracy for the user’s visual inspection of the sample. However, the

mylar layer has a very high tensile strength along with remarkable flexibility that prevents it from breaking even if the underlying glass is cracked or shattered in the course of the work. The mylar film will keep the pieces intact and safely contained

BD361021  
Heparinized, 200/bx,  
1000/cs  
BD361025 Plain,  
200/bx, 1000/cs  
BD361027 Calibrated,  
200/bx, 1000/cs

## Chase Scientific Glass, Inc



### Disposable Culture Tubes

Borosilicate glass round bottom, disposable culture tube. 250/tray, 1000/cs

CHS60A10B 10x75mm  
CHS60B12B 12x75mm  
CHS60C13B  
13x100mm



### Capillary Tubes

Micro hematocrit  
Heparinized red coded  
glass capillary. 100/vial,  
12 vials/cs

CHS40B501



Micro hematocrit plain  
blue coded glass  
capillary. 100/vial, 12  
vials/cs

CHS40A502



Heparinized, 60mm,  
100/vial, 12 vials/cs  
CHS40C505

## Globe Scientific, Inc

### Transfer Pipettes

Globe Scientific features an extensive range of one-piece liquid transfer pipettes. PAST-R-PETTES are made from low density polyethylene, thereby eliminating the risk of contamination or infection from broken glass. They are chemically inert, non-toxic and are offered in many different models. Our six inch (5ml and 7ml) models are also available sterile. PAST-

R-PETTES have controlled, reproducible drop sizes and are perfect for all types of laboratory testing including chemistry, micro-biology, blood banking, urinalysis and hematology. They can also be heat sealed to act as convenient storage/transportation containers. Also available are polypropylene dispensing and spreading pipettes for RPR and other agglutination testing

GLB137030S 5ml, 6",  
Bulb Draw 3.1ml, 25  
drops/ml, graduated to  
1ml, 5000/cs  
GLB135030S 7ml, 6"  
Bulb Draw 3.2ml, 22  
drops/ml graduated to  
3ml, 5000/cs

### Centrifuge Tube

15ml Centrifuge Tubes-  
Graduated

GLB6265 Sectioned  
Boxes of 100, 500/pk,  
1000/cs

## LIFESCAN

### Disposable Fine-Tip Transfer Pipettes

Reduces the risk of cross-contamination in the multi-patient setting. Disposable fine-tip transfer pipettes can be used to transfer a single whole blood sample from



a capillary puncture to a glucose test strip

LIF010-316 500/pk

## IMMUNOASSAY ANALYSERS

### Abbott Diagnostics



#### IMx System

Abbott IMx system is an automated, bench top immunoassay analyzer designed to test for thyroid, fertility, cancer, hepatitis, transplant, rubella, congenital, cardiac and metabolic assays.

IMX-0838959 IMx System



#### AXSYM System

Abbott AXSYM, the world's first third generation immunoassay analyzer, combines continuous, random access with a broad testing menu which

includes thyroid, cancer, fertility, TDMs, Drugs of Abuse, congenital, metabolic, cardiac and transplant assays.

AXS-07A8301  
AXSYM System

### IMMUNOASSAY & CHEMISTRY CONTROLS

### Bio-Rad

#### Assayed QCS Chemistry Control

Assayed QCS Chemistry Controls are a new addition to the growing Bio-Rad family of quality control products. These human serum based general chemistry controls offer a wide range of listed analytes, with the added benefit of easy-to-use screw caps

CIB970200 Assayed QCS, Level 1, 15x5ml  
CIB70500 Assayed QCS, Level 2, 15x5ml

### Hematronix, Inc



#### Meter Trax Whole blood Combination Hematology and Chemistry Control

For hemoglobin, hematocrit and glucose testing

HTX310 Tri-level, 6x2ml

#### C3 Conformance Chemistry Control

Lyophilized assayed and unassayed chemistry control. More than 40 chemistry assays for the most recent chemistry analyzers

HTXC3N Normal, 15x5ml  
HTXC3A Abnormal, 15x5ml

## CHEMISTRY ANALYSERS

### CHOLESTECH



#### Cholestech L.D.X Lipid, Glucose & Liver Enzyme Testing System

-Clia waived  
-Immediate results (when you need them)  
-Increased office revenue  
-Complete lipid profile plus glucose (Total Cholesterol, HDL, Triglycerides, Glucose LDL, VLDL, and a

TC/HDL Ratio) or ALT (GPT) in 5 min

Features all of the components necessary to perform a complete lipid profile, glucose and ALT test while your patient is still in the office. The fast (5 minute), 3-step procedure provides immediate feedback for on-the-spot adjustment of therapy, enhances productivity, and saves time. The L.D.X, system, has the same level of accuracy and precision provided by traditional laboratories with a turnaround time of minutes instead of days. The ALT (GPT) test makes it possible to perform a liver function test to monitor the potential side effects of cholesterol-lowering, diabetes or other therapies. All test are reimbursable through Medicare and most major insures

System includes:  
analyzer, printer, power supply, starter pack (200 Lancets, 200 capillary tubes, 200 capillary plungers, 1 Mini-pet pipette, Finger stick tip pad), optics check cassette, printer cable, user manual, procedure manual, and training video

CHO10-959 Cholestech L.D.X System  
CHO10-986 TC (Total Cholesterol 10/bx  
CHO10-988 TC and Glucose 10/bx  
CHO10-987 TC and HDL Panel 10/bx  
CHO10-990 TC HDL GLU Panel 10/bx  
CHO10-989 Lipid profile (TC, HDL, LDL, VLDL, and TC/HDL Ratio) Trigs, 10/bx  
CHO10-991 Lipid Profile Plus Glucose 10/bx  
CHO11-772 ALT (Alanine Aminotransferase) 10/bx  
CHO10-228 Optics Check Cassette with case  
CHO10-983 Lipid/Glucose level 1&2 Controls, 6 vials, 2ml (3each)  
CHO10-976 White labels for the Seiko smart label printer, 130/roll, 2 Rolls/bx  
CHO11-785 White Adhesive Labels for the Cholestech Thermal Printer, 1 Roll (400 per roll)  
CHO10-940 Capillary Tubes (Plastic Clad), Vial of 50  
CHO10-311 Capillary Plungers, Vial of 50  
CHO11-000 Mini-Pet Pipette (50ml)  
CHO11-010 Pipette Tips, 50/bg

## ELAN DIAGNOSTICS



### ATAC 6000 Chemistry System

Provides an efficient flexible platform for smaller volume POL (less than 6 panels per day). The ATAC 6000 allows the operator to perform individual or multiple tests in a batch mode with a broad test menu, coupled with a powerful data management capability, offers the highest of flexibility and performance within its class

**Packaging Configuration:**  
ATAC 6000 reagents are in bulk configuration providing additional cost savings

**Reagent Storage:**  
Most ATAC 6000 reagents require refrigerated storage with open vial stability of up to 14 days. Refer to the application sheet for details

**ATAC 6000 chemistry System provides:**  
-75 tests per hour  
-ISE module for simultaneous sodium, potassium, and chloride testing  
-Includes ATAC data Management System

ELA926-001 ATAC 6000 Chemistry System



### **ATAC 8000 Random Access Chemistry System**

Provides high throughput, random access technology for the physician office laboratory. The bench-top, compact design provides immediate test results delivered in a cost efficient and productive manner

#### **ATAC 8000 System provides:**

- 475 tests per hour (general Chemistry and ISE)
  - 18 comprehensive metabolic panels or 32 basic metabolic panels per hour
  - O-board solid state ISE including CO<sub>2</sub>, Chloride, Potassium, Sodium
  - Reusable glass cuvettes, ensuring low reagent cost
  - On-board refrigeration, water system
  - STAT capability
  - Includes ATAC Data Management System
- Reagent Storage:**  
Most ATAC 8000 reagents require refrigerated storage. Stability varies by product, typically 14-30 days. Refer to the application sheet for details

#### **Packaging Configuration:**

The ATAC PAK boat design optimizes stability and minimizes reagent waste. This unique design provides ease of use and requires less time for reagent preparation

ELA930-001 ATAC 8000 Random Access Chemistry System

## **ABBOTT DIAGNOSTICS**



### **Abbott Aeroset System**

The Abbott Aeroset System has been designed to meet customer needs for more speed, more intelligence and more flexibility. The Aeroset achieves more speed with up to 2,000 tests per hour with the integrated Chip Technology ISE method which minimizes work stations, improve asset management and improves turn around time. More intelligence is enabled by this easy-to-use multiview touch screen capability, which improves turn around time. More flexibility has been designed in the Aeroset System with dual reagent supply centers with 56 reagent positions

each to allow menu consolidation. Open Code reagent bar coding utilizes multiple barcode symbologies to allow an open system format and enable ease of use through the use of 2D barcoding

ADD Aeroset system

## **Ortho-Clinical Diagnostics**



### **Vitros 250 Chemistry System**

The Vitros 250 is a flexible system that can meet requirements in multiple environments- small hospitals, backup in large hospitals, clinics and satellite locations. With throughput of up to 250 results per hour, the VITROS 250 offers the same menu, features and ease-of-use as the VITROS 950, with a smaller footprint. The VITROS 250 also features on-board dilution, and can be automated or placed in a work-cell. No preparation of reagents for use. Minimal interference from hemolysis, lipemia & bilirubin, small sample size requirements.

Versatile and productive-  
up to 250 results per hour

ORT8132086 VITROS  
250

### **The Vitros DT60II Chemistry System**

The VITROS DT60 II Chemistry System provides the convenience and reliability for routine or emergency testing in Physician offices, Clinics, Hospitals and Reference labs. The DT60 II Chemistry System is also the perfect fit in today's managed care environment. When you need fast, accurate, convenient, and cost-effective diagnostic testing, rely on the compact VITROS DT60 II Chemistry System. It can perform basic chemistries, electrolytes, enzymes, full lipid profile and derived tests, wide ranges allow for fewer dilutions and repeats. The system's random access testing allows you to run the chemistries for your choice in any order. VITROS dry-slide technology minimizes the effects of common interferences to provide precise, accurate results while yielding cost and convenience benefits – no mixing of wet reagents, no waste, no need for special plumbing

ORT8422172 VITROS  
DT60 II

### **Vitros 250 Consumables and Reagents**

**Vitros 250 Consumables**  
ORT1250232 VITROS  
250 Dessicant pack,  
2sets/bs  
ORT1474030 VITROS  
250 Microtips, 250/pk  
ORT8447823 VITROS  
250 PCS II Disposable  
Tips, 1000/bx  
ORT1765304 VITROS  
250 Reference Fluid,  
30/bx  
**Vitros 250 Reagents**  
ORT8196057 ALB  
Albumin, 250/pk  
ORT1053180 ALKP Alk  
Phos, 300/pk  
ORT1537513 ALT Alt  
SGPT, 50/cartridge, 6/pk  
ORT8433815 AST Ast  
SGOT, 300/pk  
ORT1743418 BUN/  
UREA Bun, 50/cartridge,  
6/pk  
ORT1450261 CA  
Calcium, 300/pk  
ORT1669829 CHOL/  
HDL Cholesterol HDL,  
300/pk  
ORT1616184 CI  
Chloride 50/cartridge,  
6/pk  
ORT8212763 CREA  
Creatinine, 50/cartridge,  
6/pk  
ORT8262396 ECO2  
carbon Dioxide, 600/ok  
ORT1707801 GLU  
Glucose, 300/pk

ORT1616200 K+  
Potassium, 50/cartridge,  
6/pk  
ORT1627504 Na+  
Sodium 50/cartridge, 6pk  
ORT8159931 TBIL  
Total Bilirubin, 300/pk  
ORT8392292 TP Total  
protein, 250/pk  
ORT1336544 TRIG  
Triglycerides, 300/pk

### **Vitros DT60 Controls & Calibrators and Reagents**

**Vitros DT60 Controls &  
Calibrators**  
ORT1957927 Calibrator,  
3 sets/carton, 30ctns/cs  
ORT8420317 Control I,  
12 sets/carton, 30ctns/cs  
ORT1448042 Control II,  
12 sets/carton, 30ctns/cs  
**Vitros DT60 Reagents**  
ORT1532175 CHOL  
Cholesterol, 25/bx, 4/pk  
ORT1532316 GLU  
Glucose, 25/bx, 4/pk  
**Blood Bank Products**  
ORT711220 Anti-Sera  
Anti-A Bio Clone,  
15x10ml  
ORT711320 Anti-Sera  
Anti-B Bio Clone,  
15x10ml  
ORT717380 Anti-Sera  
Anti-D Bio Clone,  
15x10ml

### **Red Blood Cell Reagents**

ORT719210 3% Red  
Blood Cells Affirmagem,  
2x10ml

ORT719810 3% Red  
Blood Cells Ortho Combs  
Control, 1x10ml  
ORT720100 3% Red  
Blood Cells Ortho  
Confidence System Kit  
ORT719610 3% Red  
Blood Cells Selectogen,  
2x10ml  
ORT1042523 Reagent  
magnetic HDL/CHL,  
60ml  
ORT1532258 Potassium  
25 DTE

## Roche Diagnostics



**Cobas Mira Plus CC**  
For labs seeking reliable,  
trouble free testing the  
Cobas Mira Plus CC  
analyzer set the standard  
for consistent  
performance

RDS43855 Cobas  
Mira Plus CC  
RDS43854 Cobas  
Mira Plus INST  
RDS43858 Cobas  
Mira ISE Module  
**Cobas Mira Chemistry  
Reagents**  
RDS42332 Albumin,  
20x6.5ml  
RDS44552 Alkaline  
Phosphatase, 20x 6ml  
RDS44553 Alkaline  
Phosphatase, 8x20ml  
RDS42375 ALT  
(SGPT), 5x12ml

RDS42346 Amylase,  
20 x 6ml  
RDS42381 AST  
(SGOT), 5x12ml  
RDS47380 BUN,  
2x100ml  
RDS47381 BUN,  
20x6ml  
RDS44033 Calcium,  
4x100ml  
RDS47372  
CANTROL HDL, 100  
Tubes/Bx  
RDS44307  
Cholesterol, 20x6ml  
RDS44334  
Cholesterol, 8x20ml  
RDS44402 CK NAC,  
20x6ml  
RDS3016579 CO<sub>2</sub>,  
3x10ml  
RDS3034712 Creatinine,  
20x3ml  
RDS47003 Creatinine  
RGT, 4x100ml  
RDS42347 GGT,  
5x12ml  
RDS47382 Glucose 2  
x100ml  
RDS47383 Glucose,  
20 x 6ml  
RDS47102  
Iron/UIBC, 4x100ml  
RDS47259 LDH,  
8x20ml  
RDS44169  
Magnesium, 3x10ml  
RDS44031  
Phosphorus, 4 x 100ml  
RDS44030  
Phosphorus, 4x100ml  
RDS44026 Total  
Protein, 12x(11+3.5ml)  
RDS44903 Total  
Protein, 4x100ml  
RDS44119

Triglycerides, 20x7ml  
RDS44120  
Triglycerides, 9x25ml  
RDS3034569 Unimate  
HDL Direct, 500 test  
**Cobas Mira Diabetes  
Reagents**  
RDS737151  
Fructosamine Control N,  
5x1ml  
RDS737178  
Fructosamine Control P,  
5x1ml  
RDS755664 HbA1c  
Calibrator, 4x1ml  
RDS764833 HbA1c  
Control N, 4x0.5ml  
RDS764841 HbA1c  
Control P, 4x0.5ml  
RDS755699 HcA1c  
Hemolysis Reagent,  
1x115ml  
RDS757055 Unimate  
Fructosamine, 12x(4.2ml  
+ 1.8ml)  
RDS755648 Unimate  
HbA1c, 3x8ml

**Cobas Mira Calibrators**  
RDS764531 HDL  
Direct, 3x1ml  
RDS759350 Serum,  
10x3ml  
**Cobas Mira Disposables**  
RDS29894 Cuvette  
segments, 500/cs  
RDS44077 Cuvette  
Segments for Changer,  
300/cs  
RDS44019 Paper  
Thermal, 110mm,  
5rolls/bx  
RDS27180 Paper  
Thermal, 80mm,  
10rolls.bx



RDS34626 Rack  
Compatible Reagent  
Container, 0ml, 100/bg  
RDS34634 Rack  
Compatible Reagent  
Container, 4ml, 100/bg  
RDS6789 Sample  
Cups, Blue, 1000/bg  
RDS27115 Sample  
Cups, White 1000/bg  
RDS8061165 Tip  
Plunger, 100ul, each  
RDS8061173 Tip  
Plunger, 1000ul, 2/pk  
RDS807795 Tubing  
RDS46071 Wash  
Tower Foam Insert  
**Cobas Mira Electrodes**  
RDS1039415 Chloride,  
each  
RDS1029371 ISE  
Sodium, each  
RDS1029355 Potassium,  
each  
RDS1029398 Reference,  
each  
**Cobas Mira Standards**  
RDS46997 ISE 1,1 x  
250ml  
RDS46998 ISE 2,1 x  
60ml  
RDS42374 ISE Etcher  
Solution, 125ml  
RDS46999 ISE  
Reference Solution,  
1x60ml  
RDS47411 ISE  
Standard and Reference  
Set, Sodium/ Potassium/  
Chloride  
RDS44337 Precision  
Testing Set, 2x25ml  
RDS42282 Reagent  
Tip Cleaner, 4x100ml  
**Cobas Mira TDM**  
RDS44550 Calibrator  
Digoxin, 1x6ml, 5x5ml

RDS43816 Test On  
Line Digoxin, 2x6.5ml  
Antibody, 1x3ml Tracer  
**Cobas Mira Transfer  
Assembly**  
RDS29266 Reagent  
probe, 5/pk  
RDS44316 Reagent  
Syringe, 1000ul, each  
RDS42423 Sample  
Cassette, Gray, each  
RDS29274 Sample  
Needles, 5/pk  
RDS43864 Sample  
Needles, 3/pk  
RDS47081 Sample  
Syringe, 100ul, each

### Globe Scientific Inc



**Disposable Sample  
Cups**  
Disposable sample cups  
for Cobas Mira

GLB6500B Blue,  
1000/Bag, 10Bags/Cs



**Disposable Cuvette  
Segments**  
Cuvettes, individually  
wrapped, for Cobas Mira

GLB5121 300/cs  
GLB5120 500/cs

## Roche Diagnostics



### Reflotron Plus Patient Management System

Proven dry chemistry  
technology uses whole  
blood, serum, or plasma  
sample. Results in about  
3 minutes. Auto-  
calibrating highly  
accurate. Easy to learn  
and operate

BID1248600 Pipette  
RDI877697 pipette  
Tips 100/pkg  
RDI127857 Capillary  
Pipettor  
RDI832375 Capillary  
Tubes, 100/pkg  
RDI1142577 Clean &  
check kit  
RDI745138 ALT  
(GPT), 30 tabs/pkgs  
RDI745120 AST  
(GOT), 30 tabs/pkgs  
RDI1200658 Amylase,  
15 tabs/pkgs  
RDI905321 Bilirubin,  
30 tabs/pkgs  
RDI1200704 BUN, 15  
tabs/pkgs  
RDI745065  
Cholesterol, 30 tabs/pkgs  
RDI1126695 CK, 15  
tabs/pkgs  
RDI886874 Creatinine,  
30 tabs/pkgs

RDI745081 Gamma  
 GT, 30 tabs/pkg  
 RDI744948 Glucose,  
 30 tabs/pkg  
 RDI1208756 HDL, 30  
 tabs/pkg  
 RDI44964  
 Hemoglobin, 30tabs/pkg  
 RDI1208764 Potassium,  
 30tabs/pkg  
 BDI745049  
 Triglycerides, 30  
 tabs/pkg  
 RDI745103 Uric Acid,  
 30 tabs/pkg  
 RDI745154 Precinorm  
 U Control  
 RDI745162 Precipath  
 U Control  
 RDI1488406 Precinorm  
 HB Control  
 RDI1183893 Precinorm  
 HDL Cholesterol Control  
 RDI745121 BM  
 Cholesterol Controls

## Diabetes Care & Control

### Abbott Diagnostics



#### MediSense Precision Q.I.D.

With the Precision QID  
 system, both the test strip  
 and the monitor are  
 optimized. The results is

a system that works so  
 well because it is  
 designed to eliminate  
 common test errors in  
 everyday monitoring

MSN97402-15  
 Precision Q.I.D.  
 MSN99121-01  
 Control Solution Glucose  
 1 High and 1 Low, 6bx/cs  
 MSN97401-05  
 Blood Glucose Test Strip,  
 100/vial, and 12 vials/cs  
 MSN97400-05  
 Blood Glucose Test Strip,  
 50/vial, 12 vials/cs

## Bayer



#### DCA 2000 + Analyzer

The DCA 2000 +  
 Analyzer provides a  
 quantitative HbA1c result  
 from 1ul of whole blood  
 in 6 minutes as a measure  
 of long-term glycemic  
 control. HbA1c is  
 certified through the  
 National  
 Glycohemoglobin  
 Standardization program.  
 The analyzer also  
 performs  
 Microalbumin/creatinine  
 assays within 7 minutes  
 to help detect early stage  
 diabetic nephropathy.  
 Results in 6 minutes.  
 Self-contained test  
 cartridges require no

reagent preparation or  
 mixing. Factory  
 calibration eliminates all  
 well calibrations.

Memory stores up to 16  
 results for data retrieval  
 and record keeping. The  
 DCA 2000 + analyzer  
 and the quantitative  
 hemoglobin A1c test  
 receive waived status in  
 Nov 1997

AME5031C DCA 2000  
 + Analyzer



AME6011 DCA2000  
 Microalbumin/ Creatinine  
 Reagent kit 10's  
 AME5035B DCA 2000  
 Reagent Kit for HbA1c,  
 10's  
 AME5068 DCA 2000  
 Hemoglobin A1c Normal  
 & Abnormal Control  
 Combination Kit, 4

#### GlucoStix Glucose Reagent Strip

For use with Glucometer  
 QA Model 5711,  
 Glucometer II Model  
 5520 Glucometer II with  
 Memory, Model 5620 or  
 visual Reading

AME2373 100/vial,  
 12 vials/cs  
 AME2627/2374 50/  
 vial, 24 vials/cs



**Glucometer Elite XL  
Diabetes Care System**

Complete system for blood glucose monitoring and automatic 120-test memory with date and time plus 14 days average. One button access to memory and download option. Includes Glucometer Elite XL Blood Glucose meter, Microlet Automatic Lancing Device, Glucometer Elite Normal Control, Glucometer Elite Test Strips, Glucometer Elite Check Strip, carrying case, User Guide and Clinilog Diary

- AME3901  
Glucometer Elite, 4/cs
- AME3911  
Glucometer Elite Test Strips, 25/vial, 24 vials/cs
- AME3873  
Glucometer Elite Test Strips, 50/vial, 24vials/cs
- AME3927 Control, High, 2x2.5ml Vials, 6pk/cs
- AME3940 Control, Low, 2x2.5ml Vials, 6pk/cs
- AME3926 Control, Normal, 2x2.5ml Vials, 6pk/cs

**Glucometer Encore test Strips**

For use with the Glucometer Encore

- AME3873 50/Vial, 24 vials/cs

**Glucofilm Test Strips**

For use with Glucometer QA Model 5735, Glucometer 3 Model 5485 and Glucometer M+ Model 5492

- AME2370 100/vial, 12 vials/cs
- AME2371 50/vial, 24 vials/cs

**Glucometer DEX Test Strips**

For use with the Glucometer DEX

- AME3610 50/vial, 24 vials/cs

**LIFESCAN**



**ONE TOUCH Ultra Blood Glucose Monitoring System**

Now you can test on your arm. It's less sensitive than your fingers because it has fewer nerve endings. You have the freedom to choose where

to test. Or give tender fingers a break from repeated lancing. ONE TOUCH Ultra requires only a tiny blood sample so you can use a shallow stick and extra fine ONE TOUCH Ultra Soft lancets. That can mean less pain even on your fingers. With accurate results in just 5 seconds there's no waiting. You can feel confident with your results

- LIF020-247 ONE TOUCH Ultra System, 4/cs



**ONE TOUCH Basic Blood Glucose Monitoring System**

The easy-to-learn, easy-to-use meter now has a brand new look, plus improved features. Designed for people with diabetes who want the right features for simple and accurate testing. Number-one in U.S. pharmacist recommendations, large, easy-to-read display and easy-to-handle test strips. Accurate test results in 45 seconds

LIF010-325 ONE TOUCH Basic meter, 4/cs

### **ONE TOUCH Control Solution**

The vial contains sufficient volume for 75 tests. Refer to your LifeScan Meter Owner's Booklet or Instructional Video for detailed control solution test instructions

LIF010-257 Glucose High, 25 vials/cs  
LIF010-357 Glucose High & Low, 2 vials/bx, 6bx/cs  
LIF010-258 Glucose low, 25 vials/cs  
LIF010-272 Glucose Normal, 2 vials/bx, 6bx/cs  
LIF010-258 Glucose Normal, 25vials/cs

### **ONE TOUCH Test Strips**

For testing outside the body (in vitro diagnostic use) must be stored in the original vial with the cap tightly closed. Never place test strips in another container

LIF010-198 Glucose, 25/vial, 2 vials/bx, 24bx/cs  
LIF010-374 Glucose, 25/vial, 4 vials/bx, 12bx/cs  
LIF010-285 Glucose, Hospital, 25/vial, 2 vial/bx, 24bx/cs



### **SureStep Test Strips**

SureStep Test Strips are for use with the SureStep Blood Glucose Meter for quantitatively measuring glucose in whole blood. When a drop of blood is applied to the pink test square of a SureStep Test Strip, the confirmation dot on the back of the test strip turns blue. A confirmation dot that is completely blue verifies adequate blood application

LIF010-359 25/vial, 2 vials/bx, 24bx/cs  
LIF010-797 25/vial, 2 vials/bx, 24bx/cs

### **Pro Control Solution**

For use only with SureStep Test Strips, read package insert before using this product. The vial contains sufficient volume for 75 tests. For in vitro diagnostics use only. Shake vial well before use

LIF010-793 Glucose High, 25 vials/cs  
LIF010-795 Glucose low, 25 vials/cs

### **ONE TOUCH Fast Take Test Strips**

New ONE TOUCH Fast Take Test Strips with Fast Draw Design Easier to use, Fast Draw Design automatically pulls blood into the test strip-so you no longer have to target blood onto the top of the test strip. Make testing more comfortable. The new test strips require an even smaller blood sample, so you can use a finer-tip lancet, which means less pain. Fast and accurate you'll get results in just 15 seconds

LIF010-444 Glucose, 50/vial, 2 vials/bx, 24bx/cs

## **Roche Diagnostics**



### **Accu-Chek Advantage Blood Glucose Meter**

Number one selling blood glucose meter. With just two steps, you get an accurate result in only 40 seconds. Uses Accu-Chek Comfort Curve strip. 100-value memory with time and date

RDS860 Accu-Chek Advantage kit

RDS984 Disposable  
Battery, 3 Volts Lithium

#### Control Solutions

RDS986 Control  
Solution, 2 Levels, 2/bx  
RDS989 Control  
Solution, 3 levels, 3/bx  
RDS552 Glucose, 1  
of each Level (1 & 2)  
RDS552 Comfort  
Curve Glucose, 1 of each  
Level (1 & 2)

#### Accu-Chek Advantage Test Strips

RDS553 Glucose,  
50/Vial  
RDS787 Glucose,  
50/vial, Hospital  
Packaging  
RDS966 Glucose,  
50/vial, 2 vials/bx



#### Accu-Chek Comfort Curve Test Strips

RDS2030373 Accu-  
Chek Strips, 50/vial  
RDS2030365 Accu-  
Chek Strips, 50/vial,  
Hospital Packaging  
RDS2030381 Accu-  
Chek Strips, 50/vial, 2  
vials/bx



#### Accu-Chek Instant Plus Glucose and Cholesterol Testing

Accu-Chek Instant Plus  
performs individual blood  
glucose test and  
individual total  
cholesterol test with  
separate strips

RDS976 Accu-  
Chek Instant Plus

#### Control Solutions

RDS919 Accu-  
Chek Instant, Glucose, 1  
of each Level (1 & 2)  
RDS918 Accu-  
Chek Instant Plus,  
Cholesterol, 1 of each  
Level (1 & 2), 2/bx

#### Test Strips

RDS913 Accu-  
Chek Instant, Glucose,  
50/vial  
RDS877 Accu-  
Chek Instant, Glucose,  
50/vial, 2 vials/bx  
RDS911 Accu-  
Chek Instant Plus,  
Cholesterol, 25/vial

## Diagnostic Tests

### Abbott Diagnostics

#### FlexSure HP Test for Serum IgG antibodies to H. Pylori

FlexSure HP is a visually  
read, qualitative,

immunochromatographic  
method for rapid  
detection of antibodies to  
H. pylori available for use  
with either whole blood  
or serum samples. Whole  
Blood test is CLIA  
waived serum is  
moderately complex.

ADDTPK-03M2620 4  
kits/cs

#### FlexSure HP Whole Blood Test Kit

ADDTPK-03M2520 4  
kits/cs



#### Signify Strep A

Signify Strep A is a  
CLIA-Waived test for the  
detection of Group A  
Streptococcal antigen  
from throat swabs or  
confirmation of  
presumptive Group A  
streptococcal colonies  
recovered from culture

ADDTPK-06D9555 50  
Test Kit

ADDTPK-08G1740  
Test Cassette with OBC,  
40/bx

ADDTPK-06D9580  
Flexible Tube, 50/bx



#### Signify HCG Urine CLIA waved

ADDTPK03M7925



Signify Urine Card Test,  
25/box

ADDTPK03M4310  
Signify Urine Control,  
Card or Disptick

ADDTPK03M250  
Signify Urine Dipstick  
Test, 50/box



**Murex SUDS (Single  
Use Diagnostic System)  
HIV-1 Test**

Human  
immunodeficiency Virus  
Type 1, sensitivity and  
specificity 99.9%, 10  
minute assay. No  
instrument required

ADDMUR-03F7601  
Murex SUDS HIV-1  
Test, 30/box

ADDMUR-03F7602  
Murex SUDS HIV-1  
Test, 90/box

**Becton  
Dickinson**

**Qtest Strep test**

Two minutes from start to  
finish. Fewest steps  
available Safe-of-the-art  
accuracy, Pour-through  
ease and simplicity

BDP494775 20 Test kit  
BDP494776 40 Test kit  
BDP494780 80 Test kit

**Futura**

The New Thinking Safety



**Dispette 2**

The Westergren “stamp”  
authenticates Dispette 2  
as the industry standard  
for manual sad rate  
testing. Dispette 2  
components are known  
for quality and reliability,  
important factors linked  
to test outcomes.  
Reservoirs are pre-filled  
with saline ensuring the  
correct dilution following  
recommended  
Westergren method when  
1ml of EDTA blood is  
added. A complete line of  
ESR products for  
specialized applications is  
also available

FTAH-1600 100/box,  
10bx/cs

**Dispette ESR**

This versatile Westergren  
ESR offers a triple  
plugged pipette tube and  
transparent reservoir,  
inhibiting accidental  
overfilling and overflow.  
Allows for use of EDTA  
or sodium citrated treated  
blood

FTAH-1500 100/box,  
10bx/cs

**Sed Pac ESR**

Sed Pac is a simple, safe  
and cost effective ESR  
that offers the flexibility  
of using EDTA or sodium  
citrated treated blood.  
This convenient system  
includes transfer pipettes  
FTAH-1700 50/box  
10bx/cs

**Globe  
Scientific Inc**



**SEDI-RATE Autozero  
Westergren ESR System**

The Sedi-Rate ESR  
system offers a simple,  
safe and accurate method  
for Westergren  
sedimentation rate  
determinations. It  
includes a plastic  
Autozero pipette  
containing an aerosol  
barrier and a  
polypropylene vial  
containing 0.25ml of  
3.8% sodium citrate  
diluent. All components  
of the Sedi-Rate system  
are completely  
disposable. An optional  
transfer pipette with a  
firm stem capable of  
piercing the stopper is

available. The use of Sedi-rate eliminates splashing, spraying and aerosol hazards. Once the aerosol barrier is activated upon contact with blood, the system is completely closed. It does not vent directly into the atmosphere as in other pushdown systems not does it employ unsafe cotton plugs for auto zeroing. Sedi-Rate is truly the safest and easiest-to-use ESR system available

GLB3469 Sedi-Rate 100-Test Kit (Pipettes and Citrate Vials), 100

## Polymedco



### Polymedco Sediplast Manual ESR System

Sediplast manual ESR System includes an exclusive pierce able stopper that helps ensure a leak-proof seal, a self-zeroing cap and overflow chamber to protect from overflowing and a low blood sample requirement of only 0.8ml 100/bx, 10bx/cs

PMOS-1000 ESR System

## Meridian Bioscience, Inc



### Immuno Card Stat Mono

The Immuno Card Stat! Mono test is a rapid test for the visual, qualitative detection of heterophile antibodies specific to Infectious Mononucleosis (IM) in human serum, plasma or whole blood. This test kit is intended as an aid in the diagnosis of IM in patients with characteristic clinical symptoms, and is intended for professional laboratory use only This information can be used by the physician and the patient for disease management

MER750330 Immuno Card STAT! Mono

**Filtra Check – UTI**  
Bacterial Cultured media detection system

MER790025 25 Test/Box

## Wampole Laboratories



### Clearview Chlamydia Test

Chromatographic color-label immunoassay for the direct qualitative detection of Chlamydia Trachomatis antigen from Endocervical specimens the kits unique workstation includes a step-by-step instruction panel and sliding pointer that can be moved to keep track of where you are in the testing process. The kit provides easy-to-read (+ or -) test results in approximately 20 minutes

CW135301 21 Test/bx

### Clearview Chlamydia Female Collection Kit

Sterile Dacron swabs for collection and transport of Endocervical swab specimens for use with the Clearview

CW135315 22 Test/bx



### Mono-latex Mononucleosis Test

Latex agglutination slide test for the qualitative or semi-quantitative detection of infectious mononucleosis heterophile antibodies in serum or plasma

CW26L1 20 Test/bx  
 CW26L2 50 Test/bx



**Mono-Plus Mononucleosis Test**

Direct solid-phase immunoassay for the qualitative detection of infectious mononucleosis antibodies in serum, plasma, or human whole blood

CW84M4 30 Test/bx  
 CW84M3 Controls, 2 Vials

**Mono-Plus Mononucleosis Whole Blood Test (CLIA Waived)**

Direct solid-phase immunoassay for the qualitative detection of infectious mononucleosis antibodies in whole blood CLIA waived

CW84138 10 Test/bx  
 CW84136 30 Test/bx



**Mono-Test Mononucleosis Test**  
 Hemagglutination slide test for the qualitative and quantitative detection of infectious mononucleosis heterophile antibodies in serum or plasma

CW25D4 40 Test/bx



**Rheumaton Rheumatoid Factor Test**  
 Hemagglutination slide test for the qualitative and quantitative detection of Rheumatoid Factor in Serum or Synovial fluid

CW35D2 20 Test/bx  
 CW35D4 50 Test/bx



**Rheumatex Rheumatoid Factor Test**  
 Latex agglutination slide test for the qualitative and quantitative

determination of Rheumatoid Factor in serum

CW34S2 100 Test/bx

**LifeSign**

**UniStep Mono**

Simple, single reagent procedure Easy to read results in 3-8 minutes State of the art EIA membrane technology. Superior sensitivity for earlier IM detection Built-in controls assure proper test performance and satisfy CLIA'88 QC requirements 99.9% Sensitivity and 98.8% Specificity. Self-contained kit includes all components to perform test, 25 per box

MTC68364 UniStep Mono

**Seradyn**

**Colorslide II Mononucleosis Test**

For the detection of heterophile antibodies associated with infectious mononucleosis for use with serum, plasma, or whole blood Dual indicator: Agglutination with color-enhanced reaction for improved readability. 60 seconds test gives rapid results. A

positive serum/plasma reaction shows strong agglutination against a contrasting blue-green background. Assayed titer able positive control is included

SER0368936/2468936  
24 test/bx  
SER0368944/2468944  
50 test/bx

### **Colorslide Rheumatoid Factor Test**

SER371336 100 test/bx  
SER0371328/2471328  
40 test/bx

## **ZymeTx, Inc**



### **ZstatFlu Diagnostic**

ZstatFlu is a CLIA Waived, neuraminidase-based rapid influenza diagnostic. Detects all known strains of influenza A & B. Results in 20 minutes from throat swab specimen with 99% specificity

#### **Starter Pack**

22 tests, heat block set of positive/negative controls, 20 specimen collection kits

ZYM90-020Q-SP

#### **Reorder Kit**

22 tests set of positive/negative controls

20 specimen collection kits

ZYM90-020Q

## **Quidel**



### **QuickVue Influenza**

A new immunoassay for the detection of influenza type A and B three simple steps with results in 10 minutes or less, color coded procedure card helps demonstrate each step of the test. Kit contains positive and negative controls and stores at room temperature

QDL00317 QuickVue Influenza 25/kit  
QDL00324 QuickVue Influenza, 10/kit

## **H. Pylori Testing**

### **Kimberly-Clark Ballard Medical Products**

#### **MicroCount Lite LSC**

Single-sample liquid scintillation counter for use with the PYtest 14C-Urea Breath Test, Weight: 25lbs, size: 14-1/2" x 6-1/2" x 10"

BAL60495  
MicroCount Lite LSC

### **PYtest Kit with Mylar Balloon**

Facility purchases kit and test analysis, then bills the insurance carrier and/or patient for test and administration and analysis

BAL60461 1ea,  
w/UPS return  
BAL60470 1ea, w/US  
Mail return  
BAL60462 10ea,  
w/UPS return  
BAL60471 10ea,  
w/US Mail return

### **PYtest 14C-Urea Breath Test Start-Up Package**

Provides PYtest 14C-Urea Breath Test supplies (except capsules and liquid scintillation counter equipment) to perform 100 tests on site

BAL60439 Start-Up package

### **PY test 14C-Urea Breath Test Capsules**

BAL60442 10 each  
BAL60443 100 each

### **PYtest Patient Brochures**

BAL60404



**Dispenser reagent**

BAL60452 1-5ml –  
Breath Collection Fluid  
dispenser for use with the  
PYtest 14C-Urea Breath  
Test

BAL60453 1-10ml –  
Scintillation Fluid  
dispenser for use with the  
PYtest 14C-Urea Breath  
Test

**MicroCount Accessories**

For use with the  
microCOUNTER Lite  
Liquid Scintillation  
Counter

- BAL60444 Air Pump
- BAL60445 Breath  
Collection Fluid
- BAL60447 Collection  
Vials
- BAL60449 Medicine  
Cups
- BAL60450 Needles,  
100 each
- BAL60454 Balloons/  
Straws, 100 ea
- BAL60455  
Scintillation Fluid

**MicroWare Software**

Software interface for the  
MicroCount Lite Liquid  
Scintillation Counter

BAL60493 Software

**Standard Set**

Quality control for use  
with the microCounter  
Lite Liquid Scintillation  
Counter Includes  
background and 14c vials

BAL60456 Standard  
Set



**MicroCOUNTER Lite  
Printer**

Miniature Continuous-  
feed dot matrix serial  
interface printer

BAL60496 micro  
Counter Lite Printer

**Occult  
Blood Tests**

**Beckman  
Coulter**



**Hemocult and  
Hemocult SENA Test**

Hemocult and  
Hemocult SENA  
provide simple,  
convenient guaiac-based  
testing for fecal occult  
blood. With over 300  
studies published  
worldwide you can rely  
on the quality and clinical

reliability of Hemocult  
products

Hemocult II SENA  
Dispensapak plus  
includes 40 patient kits, 2  
(15-ml) bottles of  
developer, instructions

COU64130 40 Patient  
Kit/bx, 4bx/cs

Hemocult SENA  
Single Test Cards  
Includes 100 Hemocult  
SENA Single Slides, 2  
(15-ml) bottles of  
developer, 100  
applications

COU64151 10bx/cs

Hemocult SENA  
Developer  
COU64115 20 (15-ml)  
bottles

Hemocult II  
Dispensapak Plus  
Includes 40 Patient Kits,  
2 (15-ml) bottles of  
developer, instructions

COU61130 40 Patient  
Kit/bx, 4bx/cs

Hemocult II  
Dispensapak Includes 100  
Patient kits/cs & 6 (15ml)  
bottles, Instructions

COU61100 100  
Patient Kit/cs

Hemocult II Triple Test  
Cards Includes 34



Hemocult II Triple Slides, 2 (15-ml) bottles of developer, 102 applicators, instructions

COU61200 10bx/cs

Hemocult Single Test cards Includes 100 Hemocult Single Slides 2(15ml) bottles of developer, 100 applicators instructions

COU60151 10bx/cs



Hemocult Developer

COU62115 20(15ml) bottles

Hemocult Mailing Pouches Box of 100 mailing pouches designed to meet U.S. Postal Service regulations

COU62115 100 pouches/bx

Hemocult Tape Kit Includes 1 Hemocult tape dispenser (100 test/dispenser) and one 15ml bottle of developer

COU63202 12/bx, 12bx/cs

## Propper



### **Seracult Fecal Occult Blood Test**

Patient kit contains one envelope, triple slide, 3 applicators and 3 flushable collection tissues. Each of 2 boxes has 40 kits and three 15ml bottles of developer

PRP372007 80/cs

### **Seracult Fecal Occult Blood Test Single Slides**

100 slides with two 15ml bottles of developer and 100 applicators

PRP371001 100/bx

### **Seracult Fecal Occult Blood Test Developer**

The Seracult developer is an aqueous solution that is available in all kits

PRP379015 20/bx

### **Seracult Fecal Occult Blood Test Tape Kits**

2 Tape Kits with roll of tape for 100 tests and one 15ml bottle of developer

PRP379010 2/bx

### **Seracult Fecal Occult Blood Test Triple Slides**

34 triple slides with two 15ml bottles developer and 102 applications

PRP372004 34/bx

### **Seracult Plus Fecal Occult Blood Test**

Patient Kit contains one envelope, triple slide, 3 applicators and 3 flushable collection tissues. Each of 2 boxes has 40 kits and three 15ml bottles of developer

PRP375007 80/cs

### **Seracult Plus Fecal occult**

100 slides with 15ml bottles of developer and 100 applicators

PRP374001 100/bx

## Helena Laboratories



### **ColoScreen Single Slides**

The single slide design allows convenient testing in batches or as a single specimen is submitted to the laboratory. Each slide has two test areas in order that two sites from each specimen may be tested, increasing accuracy. Includes 100 single ColoScreen slides with on-slide ColoCheck monitors, 2x15ml ColoScreen developer and 100 specimen applicators

HEL5072  
ColoScreen Lab Pack,  
100

### **ColoScreen Triple Slides**

Ideal for Physician's office or clinic use, the office pack allows slides, sample applicators and mailing envelopes to be conveniently distributed to patients, who can then prepare test slides in the privacy of their homes. The convenient triple slide provides three successive tests in one unit. Each single slide in the triple unit has two test areas so that multiple sites from each specimen may be tested, increasing accuracy. Includes 100 triple unit ColoScreen slides with on-slide ColoCheck monitors, 6x15ml ColoScreen developer, 300 specimen applicators 100 ColoScreen mailing envelopes and 100 patient instruction sheets (bold print for easier reading)

HEL5071  
ColoScreen III Office Pack, 100

### **ColoScreen Envelopes**

HEL1002  
ColoScreen Envelopes,  
100



### **ColoCare**

ColoCare is the leading throw-in-the-bowl test for detecting pre-symptomatic occult bleeding caused by gastrointestinal diseases. It is safer, easier and more pleasant to use than traditional guaiac slide tests. Simply place a ColoCare test pad in the toilet after a bowel movement, watch for a color change, then flush the pad away. It's clean and disposable. Kits contain 3 ColoCare tests, 1 patient instruction sheet, 1 ColoCare replay card, 50 ColoCare Dispensed Today labels and instructions for medical personnel

HEL5651 50 patient kits

## **MedTek Diagnostics**



### **HemaWipe Fecal Occult Blood Test**

#### **Triple-Test Kit**

Kit includes 80 complete triple-test patient

screening packs, 3 vials of developer, product instructions, developing instruction card and MSDS sheet. Each patient pack includes 3 HemaWipe tests with English/Spanish instructions and specimen mailing envelope

MTK100-2380  
Triple-Test Kit

#### **Single Test Kit**

Same as above but with 2 vials of developer and 1 HemaWipe test

MTK100-2180  
Single-Test Kit

### **HemaSlide Fecal Occult Blood Test**

Simplifies in-office testing with easy-to-use single test slides. More economical than card-and-stick slide type tests Includes 60 test dispenser box, one vial of developer, product instructions and MSDS sheet

MTK110-2060  
Starter kit (includes wall bracket kit)  
MTK110-2160  
Refill Kit

## **Hematology**

# Abbott Diagnostics



## Abbott CELL-DYN 1200

ADDCLD-03H0701  
Cell-DYN 1200cs  
w/printer

ADDCLD-07H3001 Cell-  
DYN 1200 O/S w/ printer

## Abbott CELL-DYN 1400 Hematology System

The Abbott CELL-DYN 1400 provides an ideal balance of advanced technology and low operating cost in a hematology analyzer. The CELL-DYN 1400 can run up to 60 patient samples per hour reporting a 12-parameter complete blood count and histograms. With features such as automated start-up and shut-down, plus a self-cleaning probe, Abbott CELL-DYN 1400 enhances laboratory productivity and safety

ADD09133801  
1400 CELL-DYN



## Abbott CELL-DYN 1700 Hematology System

Abbott CELL-DYN 1700 is a compact, easy-to-use hematology analyzer with a unique combination of advanced features and low operating costs CELL-DYN 1700 features: small (30ul) sample size, automated probe wipe, one-step operation, automated data management, and 18-parameter results in 60 seconds. With unmatched speed, convenience, safety, and advanced data management, plus low operating cost, Abbott CELL-DYN 1700 is the real value in hematology analyzers

ADD03H5301  
1700  
ADD03H5701  
1700CS  
ADDCLD-01700/2YW  
1700 W/ 2 Year warranty  
ADDCLD-  
01700CS/2YW  
1700CS W/ 2 years  
warranty



## Abbott CELL-DYN 3200

The CELL-DYN 3200 offers an affordable, high-

Resolution Flow Cytometry hematology system for your medical practice. A 20 parameter, true 5-part differential CBC can be obtained from the push of a button, all within 60 seconds. Results are more accurate and reportable. Extended linearity provide for fewer manual dilutions. State of the art technology coupled with a comprehensive data management system assures detailed patient reports and an extensive quality control program. Now the unique power of ABBOTT CELL DYN technology combined with speed, simplicity, safety and proven service and support is available to you in a highly reliable, compact instrument

ADD04H6001  
3200SL  
ADD04H5901  
3200CS



## Abbott CELL-DYN 3700

The CELL-DYN 3700 incorporates proven electronic impedance with high-resolution flow Cytometry. This marriage of complementary technologies provides accurate results, even in

the presence of abnormal pathology. The CELL-DYN 3700 easily handles problematic specimens, such as those with nucleated red blood cells, platelet clumps, and/or resistant red blood cells. Its low-maintenance system utilizes minimal tubing, electronic solenoids, and no stand-alone pneumatic modules. An online diagnostic program continuously monitors vacuum, pressure and voltages, helping to prevent system failures by automatically notifying the operator when corrective action is required

ADDCLD-02H3001  
3700CS  
ADDCLD-02H3101  
3700SL

## Becton Dickinson



### QBC Autoread Plus Hematology System

Nine parameters, compact, low maintenance, dry hematology analyzer. Provides WBC, Hemoglobin, Hematocrit, MCHC Platelet, total and percentage Lymphocyte

Monocyte, and total and percentage Granulocyte values. Information available from either a capillary or venous specimen Easy to use and read System includes auto reader, centrifuge, work station and pipette, spare parts kit, operators manual, hematology test guide and diagnostic wall chart

BDP428605 QBC  
Autoread Plus  
BDP424240 Venous  
Tube Test Kit, 100 Tests  
BDP424241 Capillary  
Tube Test Kit, 100 tests  
BDP424640 QBC E-Z  
Prep Tubes, Venous  
BDP424641 QBC E-Z  
Prep Tubes, Capillary  
BDP423406 QBC  
Accutube Kit  
BDP424304 QBC  
Control

### QBC STAR Centrifugal Hematology System

Simplifies In-Office CBC Testing. The QBC STAR System employs advanced dry hematology technology, compared to alternate methods that employ bulky liquid reagents. All of the reagents needed to perform a CBC test with the QBC STAR System are contained in the QBC STAR Tube. After filling the tube with the blood sample, the clinician

simply places it in the QBC STAR System and obtains the test results after the analysis is complete. The QBC STAR System is fully automated and easy to operate

BDP429000 QBC  
STAR System  
BDP429010 100 Test  
Kit

## STRECK Laboratories, Inc

### Streack Diluent III

A balanced electrolyte solution manufactured for use as a diluent for blood cell counting and sizing. Streck-diluent III is for use on the Beckman Coulter Counter S-Plus JR, ST, JS, JT, S-plus IV, V, VI, with three-part differential and STKR, and Abbott Cell-DYN 1400, 1500, 1600, and 610. The shelf life is two years from date of manufacture

STK280200 20 liter

## Wampole Laboratories



### **Stat-Crit Blood Sample Carrier**

Disposable, precision molded-plastic device with built-in electrodes for use with the Stat-Crit instruments to determine hematocrit and hemoglobin measurement

CW37171 120 Packs

## **Beckman Coulter**

### **Reagents & Controls**

COU7546808  
S-Cal (2x2ml)  
COU7547005  
S-Cal Calibrator (1x6ml)  
COU7547026  
S-cal w/diskette (3ml)  
COU7547025  
4C PLUS Tri Pack Cell Control (6x3.3ml)  
COU7547003  
4C Plus Tri Pack w/Diskette (3x3.3ml)  
COU7546968  
4C PLUS Tri Pack (T series) (6x3.3ml)  
COU7546771  
4C PLUS Tri Pack (9x3.3ml)  
COU8546931  
Coulter Clenz (10L)  
COU8546930  
Coulter Clenz (5L)  
COU8546929

Coulter Clenz (500ml)  
COU7547056  
Coulter Clenz Concentrate (2.5ml)  
COU8546733  
ISOTON III (20L)  
COU7546934  
Single Sled Tickets w/IR & T w/diff  
COU856983  
LYSE S III diff (1L)  
COU8547007  
Micro-Pak (10L)  
COU8547049  
ONYX PAK (10L)  
COU7546875  
Roll Printer Paper  
COU8546940  
UNI-T-PAK (10L)  
COU8546939  
UNI-T-PAK (5L)

## **Hematronix, Inc**

### **Reagent/Control System for COULTER MD Series and T Series**

HTX460 SYS-T-KIT Reagent System, 10 liter/ 250 cycles



### **EQUINOX 16 Controls For Coulter Three-Part Differential Analyzers**

Hematology control for COULTER Three-part differential analyzers

HTX116 (27) 27x2.5ml  
**Hematology Non-Differential Reagents**

### **Diluent**

HTX203-4  
OSMOCEL, 4x1 Gallon

### **Detergent**

HTX302-4  
Hemapurge, 4x1 gallon  
**Lysing and Hemoglobin Reagent**  
HTX401 Rapid Lyse, 6x18ml



### **TRI-COUNT 16 Controls for the Cell-DYN Three Part Differential Analyzers**

Whole blood hematology reference control for Cell-DYN Three-part differential analyzers

HTX01H65 Tri-level, 12x2.5ml

### **Cell-DYN Three-Part Differential Reagent**

Specially formulated for Cell-DYN three-part differential analyzers

### **Diluent**

HTX02H20 2000/1600 Diluent, 20 liter  
HTX02H26 1500/ 610 Diluent, 4x1 gallon

### **Detergent**

HTX03H20 2000/1600 Detergent 20 liter  
HTX03H26 CD DIFF Detergent 4x1 Gallon  
**Lysing and hemoglobin Reagent**



HTX04H20 1600  
LYSE, 4 liter  
HTX04H35 1500/ 610  
LYSE, 1 liter

### Whole Blood system Calibrator

Whole blood calibrator  
for WBC, RBC, HGB,  
MCV and PLT  
parameters for use on  
selected differential  
hematology analyzers

HTX01H60 System  
Calibrator, 2x2.5ml



### Hema-Zyme Enzymatic Cleaner

HTX393 2x18ml

## Microbiology

### Becton Dickinson



### Affirm VP III Microbial ID Test

The only diagnostic DNA  
probe test that objectively  
identifies and  
differentiates three  
vaginitis/BV pathogens  
from a single sample. The  
test detects clinically  
significant levels of

Candida SP, Gardnerella  
vaginalis and  
Trichomonas vaginalis in  
one hour from start to  
finish

BDP250100 Affirm  
System

### BD Affirm VPHI Sample Collection Sets

Microbial Identification  
Test for bacterial  
Vaginosis/Vaginitis. Only  
the Affirm VP III Test  
gives you a dependable,  
rapid means toward early  
identification and  
treatment of these at risk  
patients. In a test that's  
completely compatible  
with the needs of the  
small laboratory

BDP446250 Sample  
Collection, Kits,  
24/carton  
BDP446252 24 Test  
Kits

## HealthLink

### Microbiological Culture media

HealthLink manufactures  
a complete line of  
prepared culture media at  
our new facility,  
including not only plated  
media, but also tube and  
bottled media  
**Standard Media and  
Mono Plates, 10/sleeve**  
HLK1020 Chocolate  
Agar

HLK1026 CNA  
w/5% Sheep Blood Agar  
HLK1034  
Dermatophyte Test Media  
(DTM)  
HLK1043 Eosin  
Methylene Blue (EMB)  
AgarHLK1087  
MacConkey Agar  
HLK1100 Modified  
Thayer Martin Agar  
(MTM)  
HLK1103 Mueller  
Hinton Agar  
HLK1106 Mueller  
Hinton Agar (8pkg)  
HLK1109 Mycosel  
Agar  
HLK1146 Strep  
Select Agar  
HLK1160 Trypt soy  
Agar w/5% Sheep Blood  
(TSA 5%)  
HLK1163 TSA w/5%  
Sheep Blood with SXT

### Multichamber Plates (Bi plates/Tri plates/Quad plates), 10/sleeve

HLK1220 CAN 5%  
Sheep Blood/MacConkey  
Agar  
HLK1272 TBA 5%  
Sheep Blood/EMB Agar  
HLK1280 TSA 5%  
Sheep Blood/MacConkey  
Agar  
HLK1442 TSA 5%  
SB/EMB/XLD/Citrate  
Urinary Agar  
**Bullseye and UniSystem  
Culture Plates, 10/bx**  
HLK1502 Bullseye  
Urine  
HLK1552 UniSystem  
Urine  
**Screens**

HLK1612 Urine  
Screen  
**Urine Dip Paddles, 10/bx**  
HLK1685 URI-ID  
Cled/EMB  
**Tubes, Bottles, Slants,  
10/bx**  
HLK1714 Biggy  
Tubes  
HLK1728 DTM  
(3/4oz) Vial, 20bx  
HLK1729 DTM  
(3/4oz) Vial, 10bx  
HLK1763 Saline 5ml  
HLK1787 Trypticase  
Soy Broth (TSB) 5ml

**JEMBEC Plates, Includes  
Bags and CO2 Tablets**

HLK1737 JEMBEC  
Martin Lewis Plates  
HLK1740 JEMBEC  
Strep Select Plates  
**BBL Sensitivity Disc,  
50/cart, 10cart/bx**  
HLK2031 AM-10,  
Ampicillin  
HLK2061 AMC-30,  
Augmentin  
HLK2081 B-10,  
Bacitracin  
HLK2101 CB-100,  
Carbenicillin  
HLK2151 CF-30,  
Cephalotin  
HLK2211 CIP-5,  
Ciprofloxacin  
HLK2351 E-15,  
Erythromycin  
HLK2401 GM-10,  
Gentamicin  
HLK2621 F/M-300,  
Nitrofurantoin  
HLK2651 NOR-10,  
Norfloxacin  
HLK2705 OFX-5,  
Ofloxacin

HLK2801 SXT,  
Sulfa/Trimethoprim  
HLK2851 TAXO-A  
HLK2901 TE-30,  
Tetracycline  
HLK2951 TMP-5,  
Trimethoprim



**TransPorter Culture  
Collection and  
Transport Device**

Superior swab transport  
system for microbiology  
Safer and Easier – no  
ampules to break or seals  
to puncture and no risk of  
glass injury No Dry  
samples – immediate  
immersion in liquid or gel  
media protects sample  
integrity Better sample  
Recovery – inert  
polyurethane foam  
sponge has no  
Antimicrobial activity  
(liquid Stuarts), very low  
level non-viable bacteria  
(gel swabs). Tamper  
evident tube seal ensures  
first time use. Double  
action security cap  
ensures a secure, no leak  
seal. Smooth round  
bottom tube fits test tube  
rack. Extra long 5-1/4”  
swabs reach difficult  
sampling sites. Large pre-  
attached label for  
recording sample  
information and patient  
data

HLK4432 Liquid  
Stuart Single Swab



**KWIK SWAB Quality  
Control**

**Microorganisms**

SWIK SWAB Quality  
Control Microorganisms  
are lyophilized pellets  
containing a single strain  
of a microorganism; they  
are intended to be used in  
proficiency, competency,  
quality control, and  
education programs.  
HealthLink offers 350  
different species of  
bacteria, yeasts and fungi

HLK3137 TAXO A  
QC Kit (2 organisms GP  
A, GP B Strep)  
HLK3161 Candida  
Albicans, 5pk  
HLK3164 E. Coli,  
5/pk  
HLK3179 S. Aureus,  
5/pk  
HLK3184 S.  
Agalactiae, 5/pk  
HLK3187 S.  
Pyogenes, 5/pk  
**Misc.**  
HLK3210 Single  
Place Disc Dispenser  
HLK3416 Sensitivity  
Testing, BBL prompts Kit  
(60 tests)  
HLK3425 CO2  
generators kit (10ea w/10  
zip bags)

HLK3460 Disposable  
Inoculating Loops (10ul  
sterile), 10ea

## Microscopes

### SEILER



#### WestLab Binocular Microscope

Features inclined  
binocular head, wide  
base, and rack and pinion  
movement

SEISXSZ814 Binocular  
microscope

## Coagulation

### Roche Diagnostics



#### CoaguChek S System

The CoaguChek System  
allows the physician to  
obtain a result from a  
finger stick drop (10ul) of  
whole blood in just 2  
minutes thus enabling a  
result while the patient is  
still in the office

RDS2138280  
CoaguChek S System

#### Controls

RDS2032155 Cartridge  
(EQC) PT, 1ea Level  
(1&2)

RDS3033384 Kit PT,  
4/ea Level (1 &2)

#### Test kits

RDS7740

CoaguChek, PT, 30/bx

#### Disposable Capillary

#### Tubes & Bulbs

RDS461 100 Tubes  
& 10 bulbs/bx

### ITC



#### ProTime Microcoagulation System

The ProTime  
Microcoagulation System  
for prothrombin time  
testing is designed to  
safely manage Coumadin  
therapy ProTime System  
consists of the ProTime  
instrument, the 3-channel  
reagent cuvette with  
built-in quality control,  
and the Tenderlett plus  
LV sample collection  
system the test procedure  
is simple, and  
performance is  
comparable to  
laboratories. Allows for  
more frequent testing for

better control and fewer  
complications

INTL11-01-01P

ProTime

Microcoagulation System

## Allegiance

#### Reagent Grade Water

(CASCO-NERL) we use  
a proprietary  
manufacturing process to  
prepare our high purity  
water, which results in  
virtually bacteria-free  
material that is essentially  
free from organic and  
inorganic particulate and  
soluble contaminants. It is  
prepared at 18-egohm/cm  
specific resistance using  
activated carbon  
filtration, reverse osmosis  
purification, mixed bed  
deionization and filtration  
to 0.5u. Water meets ACS  
reagent grade water,  
USP/NF purified water  
and NCCLS/CAP reagent  
grade Type 1 water  
specifications at time of  
manufacture. Certificate  
of Analysis available  
upon request; includes  
more than 60 parameters  
and analytes. Contains no  
preservatives. For in vitro  
diagnostic use and  
laboratory use only not  
for infusion, injection or  
irrigation Store at  
controlled room  
temperature, 15o to 30oC  
(59o to 86oF)

M & I Medical Sales, Inc., 4711 SW 72 Ave, Miami, FL 33155, U.S.A.

Ph 305-663-6444, Fax 305-663-6201, [contact@mimedical.com](mailto:contact@mimedical.com) , [www.mimedical.com](http://www.mimedical.com)

BGHC4251-5 5 Gal

### **Fix-Rite 2 Cytology Fixative Sprays**

(Richard-Allan Scientific)  
With these sprays, you can collect and transport specimens without using hazardous flammable liquids that require special packaging and handling. The sprays help prevent cell loss and distortion in order to maintain specimen integrity that is necessary for accurate diagnosis. Choose from pump in a 4oz bottle and aerosol sprays in a 4oz can. 12 bottles or cans of spray per case

BGHS7790-2B  
Aerosol Spray

## **Becton Dickinson**

### **Spray-Cyte Cytology Fixative**

Proven fixative method for all types of cytological smears. Fine spray provides thin but durable coating over specimens on slide

BDP427180 44cc  
(1.5oz), 12 cans/cs

## **ERIE Scientific Company**



### **Plain Microslides**

Glass slides have low iron content, no green tint, and are corrosive resistant. Slides are 25x75x1mm

ES630 Microslides,  
75x25mm plain

## **Medical Chemical Corporation**

### **99% Isopropyl Alcohol**

Alcohol commonly used for cleaning and drying of instruments. It also has many uses in the laboratory in various staining and analytical techniques. 99% isopropyl alcohol does not contain sthyl alcohol and is not offered as a substitute. 99% isopropyl alcohol is not for internal or external use

MCC104B Gallon

### **Methyl Alcohol (Methanol)**

Alcohol most commonly used in laboratories for cytology, histology, microbiology and other general laboratory applications. It has been used in alcohol lamps. Methyl alcohol is not intended for internal or external use

MCC107B 16oz  
MCC107 1 gallon

### **Potassium Hydroxide 10%**

MCC783A 16oz,  
dropper bottle  
MCC783A 4oz

### **Iodine, Lugol's**

MCC10434 16oz

### **Trichloroacetic Acid**

MCC3562A 50%, 4oz

### **Trichloric Acid**

MCC3565A-85-4  
85%, 4oz

### **Deionized Water, ACS Reagent Grade, Non- Sterile**

MCC9265B 5 gallon

### **Acetic Acid, 3%**

MCC3084A-3-16  
16oz

### **Acetone**

MCC100B-16 16oz  
MCC100B-gl Gallon

### **Monsels Solution/Ferric Subsulfate**

MCC5548E-16  
16oz  
MCC5548E 16oz  
MCC5548E-2 2oz

### **Immersion Oil, Type A**

MCC121E-20oz-A  
20oz

### **Stain Gram Kit**

Modification of classic  
Grams procedure

MCC320

## **STRECK Laboratories, Inc**



### **Temp-Chex**

Enviro-Safe, Red spirit and Mercury Temp-Chex thermometers monitor refrigerators, freezers, and incubators/room temperature. Each thermometer is engraved with a serial number traceable to an NIST thermometer with scales in 1/20 increments, allowing the laboratory to meet CAP and CLIA standards contained in a vial of propylene glycol, Temp-Chex attaches to your refrigerator, freezer, or incubator wall magnetically or adhesively. The thermometer and vial are enclosed in a plastic tube to protect the thermometer and to contain contents in case of breakage. A temperature wall chart is included with each Temp-Chex. Temp-Chex thermometers are made in the U.S.A

STK240041 -5o to  
+15oC

STK240043 -5o to  
+15oC

STK240045 +30o to  
0oC

## **Graham-Field**

### **Aerocell Exfoliative Cytology Fixative Spray**

Quick drying, clear film coating for cytological specimens. Water soluble, use with standard staining technique, store coated slide in dry place indefinitely

GFAQ109-05 3.5oz,  
12/cs

## **Hematronix, Inc.**

### **Reagent Grade Water**

HTX530-4 1gallon  
HTX530 20liters

## **Unisource**

### **Distilled Water**

UNJ4014676 Distilled  
water