

The **MEDI·LITE** **SERIES**

**A Distinctive, Full-Featured
Medical Lighting System
Of Exceptional Value**

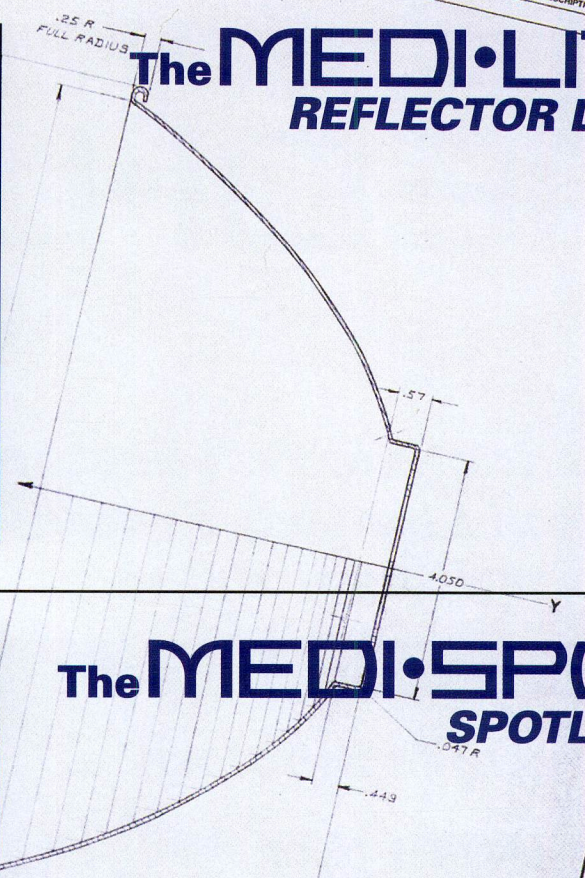
- **High Quality**
- **Proven Technology**
- **Contemporary and
Color-Coordinated Design**
- **Halogen Bulb Sources**
- **Interchangeable
Mountings**

F O C U S O N V A L U E

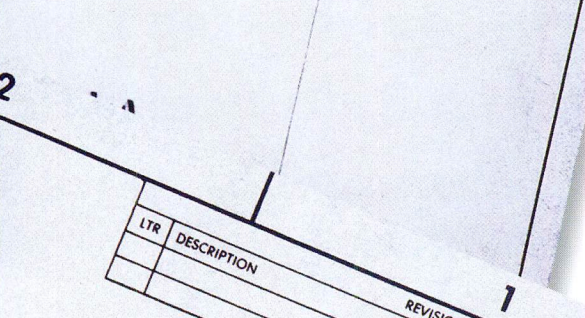
REV	DATE	REVISIONS	BY
		DESCRIPTION	



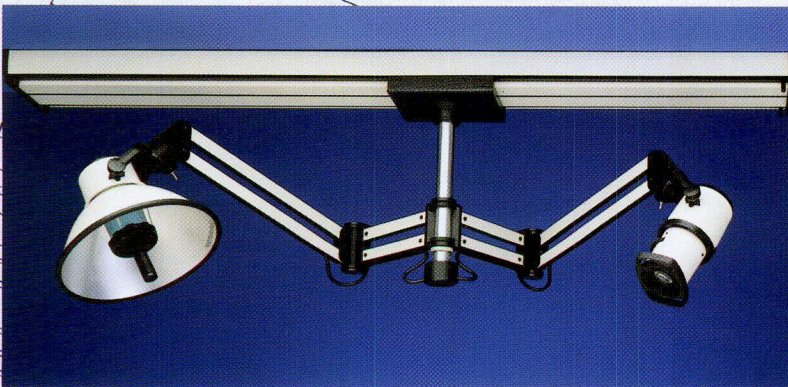
The MEDI-LITE REFLECTOR LIGHT



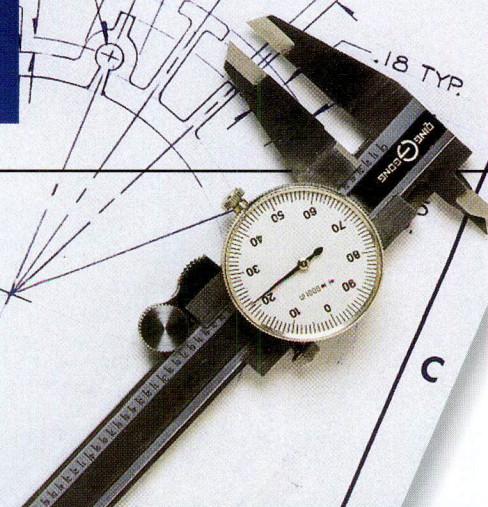
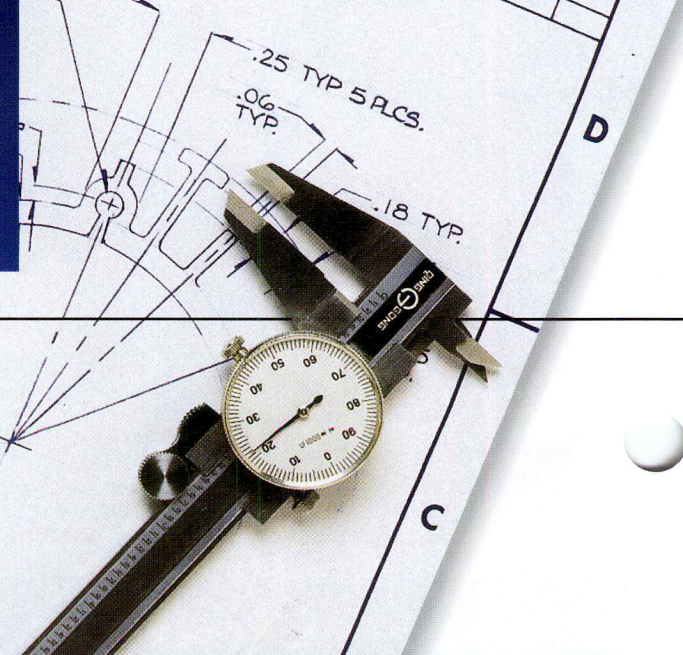
The MEDI-SPOT SPOTLIGHT



LTR	DESCRIPTION	REVISIONS
		1



The EZ-GLIDE CEILING TRACK



25
00

3.50

1.25
TYP.

.06
TYP.

14°

This handsome 13" (330 mm) reflector light represents all the advantages of the new Medi-Lite Series. Considered one of the best values in the industry, the contemporary Medi-Lite Reflector Light provides high value at a low cost.

As with the entire series, this streamlined unit provides an outstanding halogen light source, is finished in durable hospital white and ebony, is available in various voltages and carries our standard 3 year warranty.

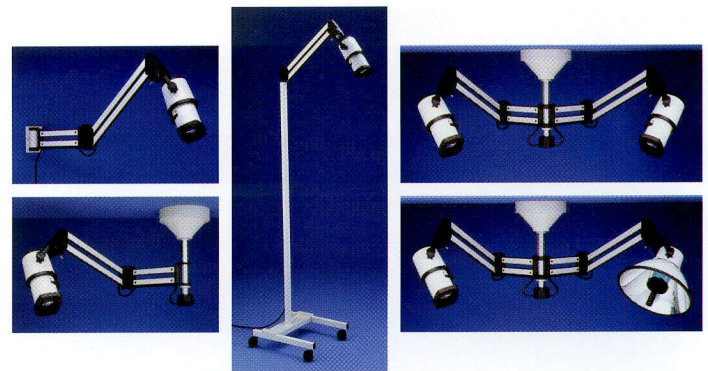
- 3500 foot candles (37700 lux) at 36" (914 mm) distance
- 3700° K color temperature



This truly remarkable spotlight is a superb example of advanced engineering and innovative style. It is an ideal companion to the Medi-Lite Reflector, has a variable spot pattern capability, and can be used in highly specialized applications.

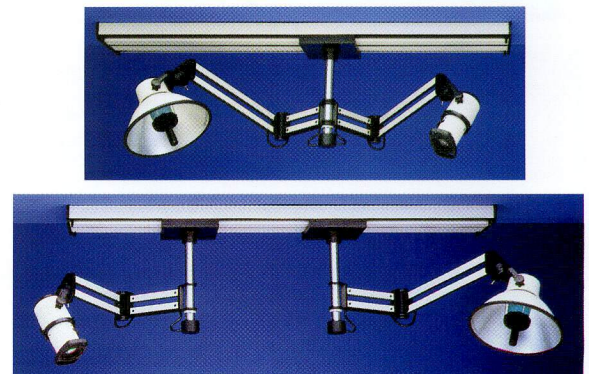
As with the rest of the series, the Medi-Spot is flexible and completely modular, with interchangeable floor, wall and ceiling mounting models. 3 year warranty.

- 2000 foot candles (21500 lux) at 36" (914 mm) distance
- 3200° K color temperature
- Spot sizes range from 3" (76 mm) to 16" (406 mm)



The exclusive EZ-Glide ceiling tracks are an inexpensive way to accommodate the Medi-Lite or Medi-Spot units. Available in single or dual trolley models, EZ-Glide ceiling tracks provide exceptional coverage with an additional 5 feet (152 cm) of smooth travel.

EZ-Glide ceiling tracks carry our standard 3 year warranty and, like the entire Medi-Lite Series, are finished in easily cleaned hospital white and ebony.



Wall Mount Models

- The reflector extends 43" (109 cm) from the wall
- Standard 14" (356 mm) extension arm in hospital white with ebony trim

Floor Models

- The upright measures 64" (163 cm)
- Heavy weighted base measures 17" (432 mm) wide, with legs 19" (483 mm) long
- Four 2^{3/4}" (60 mm) twin-wheel casters for easy mobility
- 8'(244 cm), 3-wire cord set with hospital grade plug
- Base, legs and upright finished in high gloss hospital white

Ceiling Mount Models

- Standard 14" (356 mm) extension arm in hospital white with ebony trim
- Standard 10" (254 mm), 15" (381 mm) or 25" (635 mm) ceiling rod, with longer lengths available
- 1 or 2 lights can be mounted on a single ceiling rod
- EZ-Glide track mounting available

The Medi-Lite and Medi-Spot are available as combination models on ceiling mountings.

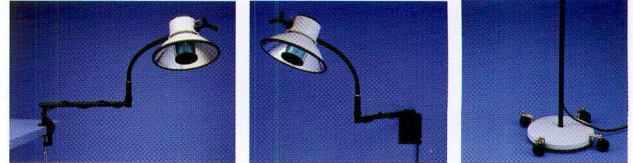


The MED-EXAM REFLECTOR LIGHT

A fine choice for examinations, minor procedures and diagnostics, the Med-Exam Reflector Light uniquely provides the same quality and elements of larger lights but in a smaller package.

Highly versatile for a light in this class, the Med-Exam Reflector Light can be mounted on the floor, wall or table, is available in various voltages, and is finished in easily cleaned hospital white and ebony.

- 2000 foot candles (21500 lux) at 36" (914 mm) distance
- 3700° K color temperature

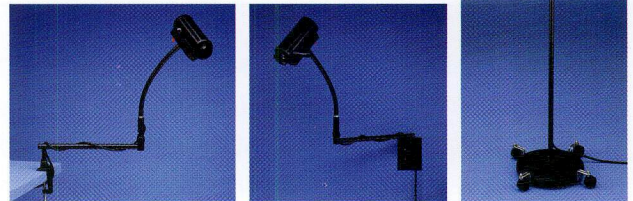


The MINI-SPOT SPOTLIGHT

Companion to the Med-Exam Reflector Light, the state-of-the-art Mini-Spot is designed for applications that do not require the refinements of higher-priced spotlights. Flexible and easily maneuverable, the Mini-Spot is first class, yet affordable.

As with all the lamps in the Medi-Lite Series, the Mini-Spot has a 3 year warranty.

- 1500 foot candles (16000 lux) at 24" (610 mm) distance
- 3000° K color temperature



CONFIGURATIONS FOR BOTH MED-EXAM AND MINI-SPOT

- 8' (244cm) long 3-wire cord with hospital grade plug
- 12" (305 mm) flexible neck

Floor Model

- Heavy 12" (305 mm) die cast iron base, available with or without casters
- Upright stand allowing vertical adjustment of light head from 55" (140 cm) to 85" (216 cm)

Wall Mount Model

- Wall bracket mounts with 4 screws
- Arm extends 15" (381 mm) from wall

Table/Shelf Mount Model

- Mounting clamp opens to accommodate thicknesses up to 2" (51 mm)
- Arm extends 15" (381 mm) from surface mount

ANOTHER OUTSTANDING LINE M & I MEDICAL SALES INC. MEDICAL ILLUMINATION

**MEDICAL
ILLUMINATION**
INTERNATIONAL
WHERE ILLUMINATION IS DEFINED



M & I MEDICAL SALES INC.
4711 SW 72nd Ave.
Miami, FL 33155
(305) 663-6444
Fax (305) 663-6201
email: contact@mimedical.com
www.mimedical.com



MANUFACTURED
IN THE USA