

Sundries

Infection Control

ASP

Johnson Johnson



CIDEX Cleaning Solutions

A trusted name for reliability and added value CIDEX solutions provide a fast and effective way to disinfect or sterilize a wide range of instruments and endoscopes

Enzol Enzymatic Detergent

A mild, enzyme-based presoak-plus-cleaner designed to thoroughly clean instruments before they are disinfected or sterilized

JJ2252 Gallon, 4/cs

JJ2254 Quart, 4/cs

CIDEX OPA Instrument Disinfectant

Cidex OPA Solution is a fast and effective way to disinfect a wide range of medical instruments and

endoscopes A (0.55%) Ortho-Phthalaldehyde solution is effective at room temperature and has excellent Tuberculocidal and high-level disinfection capabilities no surfactants, no activator and no mixing required 14 day reuse life and 2 year shelf life

JJ20390 Gallon, 4/cs

CIDEX Sterilizing and Disinfecting Solution

Cidex Activated Dialdehyde solution is fast and effective way to disinfect a wide range of medical instruments and endoscopes A 2.4% alkaline glutaraldehyde solution, Cidex has excellent Tuberculocidal and high level disinfecting capabilities Achieves high level disinfection in 45 minutes at 25 degrees Celsius non-corrosive to instruments and contains no surfactants 14 day reuse life

JJ2250 Gallon, 4/cs

JJ2245 Quart, 4/cs

CIDEX Plus Sterilizing and Disinfecting Solution

Cidex Plus 28 Day Solution is a fast and effective way to disinfect a wide range of medical

instruments A 3.4% alkaline glutaraldehyde solution Cidex Plus has excellent Tuberculocidal and high level disinfecting capabilities achieves high level disinfection in 20 minutes at 25 degrees Celsius Non-corrosive to instruments Contains surfactants 28 day reuse life

JJ2785 Gallon, 4/cs

JJ2683 Quart, 4/cs

CIDEX Instrument Sterilant Test Strips

JJ2920 14 day

60/bottle, 2 bottles/cs

JJ2926 28 day

15/bottle, 2 bottles/cs

JJ2924 28 day

60/bottle, 2 bottles/cs

JJ20392 OPA

60/bottle, 2 bottles/cs

Instrument Soaking Tray

One perforated inner liner and one lid capacity 1.1-gal/4.165 liter

JJ2010 10"x 4"x 5

One perforated inner liner

and two-lid capacity

2.5gal/9.463 liter

JJ2016 19"x 6"x5

Sklar



Sklar Soak

Instrument decontaminant
SKL10-1603 Gallon,
4/cs

Sklar Kleen

Instrument detergent
SKL10-1630 3-1/4lb
Pitchers, 6/cs



Sklar Disinfectant

Surface disinfectant
SKL10-1653 Gallon,
4/cs

Chester Labs



AprilGuard Instrument Cleaners

Chester Labs Organisol Detergents effectively dissolve, suspend, and digest dried blood, serum, tissue samples, culture nutrients and other

proteinaceous matter one ounce turns one gallon of tap water unequaled soaking solution

Organisol Detergents are effective on: surgical instruments, laboratory porcelain, rubber, plastic, and glassware cleaning is quick and easy with no scrubbing Organisol detergents won't rust your expensive instruments, the formula is non-toxic and odorless we also formulated Organisol detergents to be biodegradable with a sequestering agent that makes it just as effective in hard water as in soft

CHE002900 4lbs,
Powder container
w/dispenser, 8/cs
CHE002700 128fl. Oz.
Liquid, 4/cs

Unisource

Surface Disinfectant

UNJ44600-00129
Surface Liquid
disinfectant Bleach, Refill
128oz / 1 gallon, 6/cs
UNJXP430502
Disinfectant Bleach,
Refill 128oz/1gallon, 6/cs

Caltech



CITRACE Hospital Germicidal Deodorizer

Fresh citrus scent destroys odors at their source Efficacious on a broad spectrum of germs and viruses (HIV-1, TB, Staph & Strep) long spraying can offers twice the spray time of other leading brands meets OSHA & CDC standards for Bloodborne Pathogens 12 cans per case

DOW49100 14oz can



CITREX Hospital Spray Disinfectant

One minute efficacy for germs and viruses (TB, Staph, Strep, HIV, etc) Safe for most environmental surfaces destroys mold and mildew in 10 minutes pleasant non-citrus scent spray and let air-dry meets OSHA & CDC standards for Bloodborne

Pathogens 12 cans per case

DOW49200 14oz can



PRECISE Hospital Foam Cleaner Disinfectant

One-step, non-corrosive hard surface disinfectant (TB, HIV-1) safe on vinyl clothing or carpets long spraying can offers twice the spray time of other leading brands meets OSHA & CDC standards for Bloodborne Pathogens 12 cans per case

DOW40513 20oz can



DISPATCH Hospital Cleaner Disinfectant w/ Bleach and DISPATCH Hospital Cleaner Disinfectant Towels w/ Bleach

Rapid acting, stable, premixed bleach disinfectant with one-minute efficacy on listed germs and viruses, two-minutes for TB no more daily mixing record

keeping or disposing of outdated product meets OSHA & CDC standards for Bloodborne Pathogens

Liquids

DOW68967 22oz trigger spray, 8btl/cs
DOW68970 32oz trigger spray, 6btl/cs
DOW68973 64oz half-gallon refill, 6btl/cs
DOW68978 128oz gallon refill, 4btl/cs

Towels

DOW69101 50 single piece towels, 6/cs
DOW69280 80 towel tub, 12/cs

CETYLITE Industries, Inc



Cetylceide II Surface Disinfectant Concentrate

A one-step, broad-spectrum hospital disinfectant that cleans as it disinfects with a pleasant citrus scent. Meets OSHA's Bloodborne Pathogens standard it has no alcohol, bleach, iodophor, phenol or glutaraldehyde, so it won't damage water-safe surfaces. One quart bottle makes 16 gallons of disinfectant solution

CET00151 1qt Cetylceide II

MADA



Mada Cide-1 Instrument Disinfectant

Ready to use

- ?? Safe and non-toxic
- ?? Alcohol-Free! Synergistic Formula
- ?? Available in Concentrate form
- ?? More Economical, Lower Cost
- ?? Unique Antiseptic Hand Foam in easy to use squeeze Dispenser

Medical Chemical Corporation

Benzalkonium Chloride
Germicide, Aqueous Solution, 1:750
Gallon

MCC1451B-1GL



Wavicide-01

A non-corrosive ready to use 2.65% glutaraldehyde Sterilant/high level disinfectant soaking solution for use with scopes and stainless steel surgical instruments no activator is required

- MCC0112 Quart
- MCC0104 Gallon
- MCC0306 Test Strips, 50/btl



Med-Chem Pink Germicide

An aqueous solution of Benzalkonium Chloride intended for use as a general disinfectant this product is ready to use and contains a corrosion inhibitor

- MCC142A Gallon



Medizime

A bacteriostatic, concentrated LOW FOAM enzymatic pre-

cleaner for endoscopes and surgical instruments Phosphate-free and completely biodegradable Recommended for machine use

- MCC3304LF Gallon

Med-Chem Laboratory Detergent

A detergent concentrate for cleaning surgical instruments and laboratory glassware to be diluted 2oz per gallon with portable tap water it has high lubricity, forms stable suds, biodegradable, non-corrosive, non-flammable and has a pH of about 8.5

- MCC138B Gallon

Tincture Green Soap, USP

The official drug green soap according to the United States Pharmacopeia USP Tincture Green Soap, USP is a combination of vegetable soap, lavender oil, glycerin and ethyl alcohol the soap is biodegradable and mildly antiseptic because of the ethyl alcohol, it is a good skin degreaser. Its antiseptic properties make it useful for preoperative cleansing particularly if followed by povidine iodine or a similar germicide

- MCC140B Gallon

Tincture Surgical Soap

A green soap with similar properties to tincture green soap, USP but manufactured with isopropyl alcohol instead of ethyl alcohol

- MCC141B Gallon

HealthLink



CitriGuard II Disinfectant/Cleaner

The perfect disinfectant/cleaner for exam tables and all your hard surfaces EPA registered, patented formula can be used by hospitals, physician' offices, nursing homes, fire & rescue services, schools and hotels. Economical formula is ready to use no dilution necessary! May be used to pre-clean or decontaminate critical or semi-critical medical devices prior to sterilization or high level disinfecting mild formula is non-corrosive

- HLK7142 Gallon refill, 4/cs

HLK7160 32oz
Spray Bottle, 12/cs
HLK7185 16oz
Empty Sprayer, 48/cs



CitriCide

CitriCide Disinfectant/Deodorizer has a broad application ideal for use in professional medical areas highly effective, EPA registered formula is germicidal, virucidal, and fungicidal effective against TB and HIV-1 (associated with AIDS) Finer particle spray more effectively penetrates areas to eliminate odors, perfect for hospitals, clinics, physicians offices nursing homes and dental offices economical and the clean, fresh orange citrus scent smells great

HLK7125 13oz. Can,
12/cs

CitriFoam

CitriFoam Disinfectant/Cleaner is a powerful foaming product designed for medical environments. Heavy duty cleaning power tackles tough cleaning jobs. Highly effective,

EPA registered formula has broad-spectrum germicidal activity including TB and HIV-1 (associated with AIDS). Broad spray pattern cuts down cleaning time. Non-abrasive formula won't harm surfaces

HLK7135 20oz. Can,
12/cs

Mettler Electronics



Cavi-Clean Liquid Detergent Concentrate

Cavi-Clean is an all-purpose detergent specially formulated for use with ultrasonic cleaners. It dissolves blood and inhibits rust formation, plus its neutral pH is gentle to the hands available in one-gallon containers, 4/cs

MTT1812 Gallon,
4/cs

Huntington

ASEPTI-WIPE Disposable Germicidal Wipe

Aseptic-wipe is a broad-spectrum, hospital-level disinfectant-saturated cloth for disinfecting nonporous surfaces. It provides a convenient, safe method for disinfecting environmental surfaces to reduce nosocomial infections. Compact, ready-to-use package saturated cloth eliminates need for gauze/paper towels

HNT61027312
12x180/1, Tub

ASEPTI-ZYME Instrument Presoak/Cleaner and Automatic Washer Enzymatic Detergent

Asepti-zyme is enzyme-formulated to dissolve and remove proteinaceous and other organic matter such as blood, mucus, feces, albumin, etc; from endoscopes and other fiber-optic and surgical instruments ASEPTI-zyme is low foaming and effective in cold water. Neutral pH formula leaves no residue and contains a corrosion inhibitor. Can be used for manual decontamination, scope washer/disinfectors, ultrasonics, washers and sterilizers, and washer decontaminators

61023175 Gallon,
4/cs

Metrex



MetriZyme Dual Enzymatic Detergent

MetriZyme is a neutral pH, non-corrosive dual enzymatic detergent designed to lift proteinaceous matter and bodily fluids from the surfaces of instruments the protein-dissolving enzymes allow a fast, simple removal of body fluids that often cannot be accomplished manually with soaps and other detergents it can be used in manual and automated reprocessing systems and in washer sterilizers/decontaminator MetriZyme is safe for use on medical, dental and surgical equipment prior to disinfection or sterilization pleasant mint fragrance

MTX10-4000 Gallon,
2/cs

MTX10-4010 ½ Gallon,
4/cs



MetriSponge – Sponge Saturated with MetriZyme

MetriSponge is a unique, specially contoured sponge saturated with MetriZyme Dual Enzymatic Detergent that simplifies the effective pre-cleaning of surgical instruments and endoscopes. Its unique shape enables thorough cleaning of cylindrical surfaces without scratching delicate instruments

MTX10-4025
MetriSponge, 25/bx



MetriWipes Germicidal Disposable Cloth

MetriWipes are a ready-to-use intermediate level disinfectant saturated applicator cloth. This synergistic formula won't crack some plastic like other high alcohol or phenol wipes on the market. The MetriWipes cloth is made of a strong,

non-woven fabric that won't leave lint on surfaces following use. A convenient solution to your environmental cleaning and disinfection needs. 160 wipes/disp, 12 disp/cs

MTX1070 6"x6-3/4"



MetriCide High Level Disinfectant/Sterilant

MetriCide is a 2.6% buffered glutaraldehyde that can be used and reused as a Sterilant and high-level disinfectant on immersible lensed and delicate instruments for up to 14 days. Compatible with medical and dental equipment and instrumentation material contains no surfactants no dilution

MTX10-1400 Gallon,
4/cs

MTX10-1405 Quart,
16/cs

MTX10-303 MetriTest
Strips, 1.5%, 50/bottle, 2
bottles/cs



MetriCide 28 High Level Disinfectant/Sterilant

MetriCide 28 is a long life 2.5% buffered glutaraldehyde that can be used reused as a Sterilant and high-level disinfectant on immersible lensed and delicate instruments for up to 28 days. Recommended for immersible medical and dental equipment and instruments contains a surfactant to enhance the disinfection process contains a rust-inhibitor to reduce corrosion no dilution required

MTX10-2800 Gallon, 4/cs

MTX10-2805 Quart, 16/cs

MTX10-304 MetriTest Strips, 1.8%, 50/bottle, 2 bottles/cs



CaviCide Surface Disinfectant/ Decontaminant Cleaner

CaviCide is a convenient, ready-to-use, intermediate-level disinfectant, which is effective against TB, viruses (hydrophilic and lipophilic), bacteria (including MRSA and VRE) and fungi it is safe for all areas of the facility including NICU, operating rooms, isolation rooms, patient care areas and laboratories. When used as directed, it will also effectively clean and decontaminate critical and semi-critical instrumentation.

CaviCide is safe for use on non-porous surfaces. It is perfect for cleaning and decontamination of environmental and medical device

MTX13-1000

Gallon, 4/cs

MTX13-1024

24-ounce spray, 12/cs



MetriGuard Housekeeping Cleaner and Disinfectant

MetriGuard is the most effective, ready-to-use, multi-purpose

Tuberculocidal broad spectrum, safe and compatible solution for use on the surfaces of non-critical inanimate objects MetriGuard was specially designed as a high-quality housekeeping product. Safe for all areas of the facility non-toxic and non-irritating

MTX10-7500 Refill, Gallon, 4/cs



ProCide-D

ProCide-D is a long life 2.5% buffered glutaraldehyde that can be used and reused as a Sterilant and high-level disinfectant on immersible lensed and delicate instruments for up to 28 days.

Recommended for immersible medical and dental instruments. Contains a rust-inhibitor to reduce corrosion no dilution required

MTX08-2860 ProCide-D (MetriCide 28) Gallon, 4/cs



Envirocide

The highest quality surface disinfectant effective against tuberculosis, viruses, bacteria, and fungi safe for use on non-porous surfaces including plastics, stainless steel, chrome, glass, Plexiglas, and painted surfaces a convenient ready-to-use disinfectant that is non-toxic and perfect for cleaning and disinfection of environmental surfaces clinically proven and widely used in hospitals and nurseries

MTX13-3324
24oz, 12/cs
MTX13-3300
Gallon, 4/cs

STERIS



**Vesphene IIse
Germicidal Detergent**

Vesphene IIse is a research developed one-step disinfectant cleaner

and deodorizer, which contains selected phenols blended with synthetic detergents and builders it is effective with soft water or hard water up to 400-ppm hardness (as CaCO3) and in the presence of 5% serum. Vesphene IIse cleans and disinfects all washable hard non-porous environmental surfaces such as floors, walls, woodwork, bathroom fixtures, equipment, and furniture. It is effective, against broad-spectrum biocidal activity including m. tuberculosis, HIV-1 (AIDS) and MRSA

STS6461-08
Gallon, 4/cs



**Klenzyme Instrument
Presoak & Enzymatic
Cleaner**

Klenzyme is a liquid, enzyme-based presoak for medical appliances and instruments the protease enzyme in Klenzyme is especially effective in the removal of protein (such as blood, mucus, feces, albumin, etc) from medical appliances (such as surgical instruments, specula, and flexible

fiberoptic endoscopes) and glassware Klenzyme is safe for use on most materials commonly used in the manufacture of health care equipment Klenzyme should not be used on equipment made of Dracom polymer (polysulfone) Klenzyme may be used in ultrasonic machines, automated equipment with presoak cycles, and manual cleaning operations

STS1673-08
Gallon, 4/cs

**Manu-Klenz Instrument
Detergent**

Manu-Klenz instrument Detergent is a phosphate-free liquid detergent for the manual pre-cleaning of surgical instruments and paraphernalia it is also ideal for use on respiratory therapy equipment Manu-Klenz has a concentrated blend of synthetic detergents and emulsifiers to effectively work on glossily soiled surgical instruments when used as directed it is free-rinsing leaving no film

STS1115-24
Quart, 12/cs

Sultan



LYSOL. Products

The leading name in surface disinfection Lysol I.C. has a complete range of both ready to use and concentrated disinfectants

Amphyl Disinfectant Deodorant Spray

SUL98300 13oz Spray

SUL95101 Gallon

Lysol I.C. Brand Disinfectant Spray

SUL9501919OZ Can, 12/cs

Lysol I.C. Disinfectant Cleaner Concentrate

This economical and effective concentrate dilutes at 1:200 1 Gallon (3.8L) makes 200 gallons (760L)

SUL95101 Gallon

LYSOL I.C. Brand Foaming Disinfectant Cleaner



One product cleans and disinfects hard, nonporous surfaces contains no abrasives, harsh acids, or bleach Pleasant, clean fragrance

SUL95524 24oz Can, 12/cs

Lysol Disinfectant Spray

Kills germs and eliminates odors on hard, nonporous surfaces formula is

Tuberculocidal, virucidal, fungicidal and bactericidal prevents odors and growth of damaging mold and mildew

19oz Can, 12/cs

SUL74650

Original Scent

SUL74260

Country Scent

SUL74675

Fresh Scent



SPOROX II Sterilizing and Disinfecting Solution

Powerful hydrogen peroxide formula for the sterilization or high level disinfection of heat-sensitive dental instruments virucidal, sporocidal, Tuberculocidal, fungicidal, and bactericidal safer and more pleasant for dentists and their staff to use than the irritating and noxious

glutaraldehyde-based disinfectants it replaces. Safer for soft metal instruments containing brass or copper poured directly into the soaking container without any need for mixing heating or activation

SUL75156 SporoX II Sterilizing and Disinfecting Solution, Gallon, 4/cs

BURNISHINE Products



Germicidal Solution

Burnishine Germicidal Solution is an EPA registered ready to use general-purpose disinfectant it effectively cleans, disinfects and deodorizes hard surfaces it kills dangerous germs quickly this product is neutral pH so it is safe for patients and cleaning personnel it is biodegradable and contains no phosphates its unique anti-corrosion formulation will not damage lenses, cements, plastics, rubber, steel, aluminum, brass or any other metal when used as directed spray, soak, soak

or wipe to thoroughly wet surface allow to remain wet 10 minutes wipe or air-dry

BRNS5 1 Gallon



Manual Cleaner

Liquid detergent for cleaning surgical instruments and equipment this detergent has neutral pH and will not irritate skin it contains special emollients to keep skin from drying out it also contains rising agents so it rinses spotless is biodegradable and contains no phosphates a built in lubricating agent helps keep instruments free flowing this detergent also rapidly cuts through grease and grime and quickly dissolves blood

BRNB2 High Suds Liquid, 1 Gallon

Miltex



Miltex Surgical Instrument Cleaner

Neutral pH formula for use in ultrasonic or manual cleaning of surgical instruments, glassware, plastic, metal or rubber goods

MIL3-720 8 ounce Bottles (Yields 32 Gallon of Solution), 12/cs



EZ-Zyme All Purpose Enzyme Cleaner

EZ-Zyme is a liquid concentrate one packet makes a gallon of cleaner each box makes 32 gallons of a highly effective instrument presoak ultrasonic and evacuation cleaning solution

MIL3-750 EZ-Zyme



Miltex Surgical Instrument Stain Remover

Special powdered formula removes stains and tarnish, restores luster to surgical instruments, autoclaves, ultrasonic

cleaners, stainless steel countertops, trays and stands

MIL3-740 8oz Jar, 12/cs

Instrument Lubricants

Paddock Laboratories, Inc



Liqua-Gel

Liqua-Gel is a viscous, non-greasy, water-soluble vehicle for use in an extemporaneous compounding or lubrication of medical instruments when Liqua-Gel is used as a lubricating agent, it will not tarnish instruments or injure rubber appliances, 12/bx

PAD1921-16 16oz

Miltex



Miltex Spray Lube

Pre-mixed non-silicone formula in convenient pump spray bottles, lubricates all moving parts on surgical instruments

MIL3-700 8 ounce
Bottle, 12/cs

Wipes & Towelettes

Tyco

Healthcare

Kendall



PREPPIES Skin Barrier Wipes

Forms protective barrier between skin and adhesive products Helps protect skin from feces, urine, chemical irritants and gastrointestinal fluids Reduces the chance of excoriation Nonsterile

KEN6560 Large, 2 ply, 50/pkg, 100/cs

Dynarex Corporation



Baby Wipes

For gentle cleansing and care of any part of baby's sensitive skin alcohol free, hypoallergenic and economical 100 count tubs

DYN1311 Lightly Scented, 7-1/8"x 7-7/8", 100/tub, 12 tubs/cs



O.B. Towelettes

Obstetrical towelette for gentle cleansing throughout partum process or whenever cleansing/refreshing is required, contains Benzalkonium chloride solution 1:250, to yield 1:750, alcohol 5% chlorothymol

DYN1302 100/bx, 10bx/cs



Catille Soap Towelettes

Perfect for midstream clean-catch urine

specimen procedures
Gentle cleansing agent,
pH balanced

DYNP-D41900
100/bx, 10bx/cs

Kimberly-Clark Corporation

KIMWIPES Disposable Wipes

KC34155 4.5"x 8.5",
280/bx, 60bx/cs

KLEENEX Medical Wipes

KC21171 White,
8.4"x 5.8", 50/pk,
48pk/cs

Unisource

Wipes

UNJ5701 Wypall
Wipes

UNJ34155 Wipes,
Carton pack, white, 4-1/2"x 8-1/2", 280/pk, and 60pk/cs

Triad Medical Products



Baby Wipes

TRIAD Baby Wipes are soft, thick wipes pre-moistened with a gentle solution that will clean

and deodorize any part of baby's body our alcohol-free solution contains Aloe Vera, to keep baby's skin soft and moisturized even after repeated use ideal for use in maternity and pediatrics units as well as day care centers and safe enough to use at home the unscented baby wipes use an odor modifying system to control unwanted odors and deodorize the skin conveniently folded so they can be used quickly and easily used

TRI10-6810 Unscented, 80/tub, 12 tubs/cs

Castile Soap Towelette

A 5"x 7"fan folded crepe towelette saturated with 2% Castile soap, packaged individually in a hermetically sealed foil laminated pouch Castile soap is a gentle cleansing agent for hand washing, general cleansing care or for cleansing the perineal area to collection of clean catch urine specimen

TRI10-5600 100/bx, 1000/cs

Antiseptic Towelette

Provide bactericidal and cleansing action for both hospital and personal use each citrus-scented, crepe towelette is saturated with Benzalkonium chloride

1:750 and 8% isopropyl alcohol solution contains 0.13% BZK size: 5x7 inches, fan folded

TRI10-5101 100/bx, 10bx/cs

Obstetrical Towelette

Formulated as germicidal wipe for use in OB and throughout the partum process to provide effective and efficient cleansing each citrus-scented, crepe towelette is saturated with Benzalkonium chloride 1:250 contains no alcohol greaseless, non-staining and non-irritating solution contains 0.4% BZK size: 5x7 inches, fan folded

TRI10-5102 100/bx, 10bx/cs

Benzalkonium Chloride (BZK) Towelette

Used for general antiseptic cleansing for patients and staff each non-scented crepe towelette is saturated with Benzalkonium chloride 1:250 contains no alcohol. Solution contains 0.4% BZK Size: 5x7 inches, fan folded

TRI10-5201 100/bx, 10bx/cs

Wash-Up Towelette

Ideal for quick, antiseptic cleansing for patients and

staff each lemon-scented crepe towelette is saturated with Benzalkonium chloride 1:750 and 5% denatured alcohol size 5x7 inches, fan folded

TRI10-5300 100/bx, 10bx/cs

Relief Personal Cloth Towelettes

Designed for temporary relief from rectal or vaginal itching and irritation or tenderness each soft, non-woven towelette is saturated with 50% witch hazel Size 5-1/4 x 6-3/4 inches, fan folded

TRI10-5400 100/bx, 10bx/cs

Plastic Patient Products

Triad Medical Products

Perineal Bottles

Used to help reduce the chance of irritation or infection of the sutured perineal area, as well as for wound irrigation the 8-oz, plastic bottle indicates both cubic centimeters and fluid ounces each bottle has a screw-off top with pop-up nozzle containing four

small holes to produce a gentle spray

TRI10-2008 8-oz bottle, bagged, 50/cs

Vollrath



Graduated Emesis Basin

16 oz graduated emesis basin is graduated in oz and cc for easy measuring contour edge fits all body areas smooth finish makes cleaning easy 250/cs

VOLH300-05 9"Gold
VOLH300-07 9"Turquoise
VOLH300-08 9"Ivory
VOLH300-10 9"Rose
VOLH310-05 10"Gold
VOLH310-07 10"Turquoise
VOLH310-10 10"Rose



Emesis Basin

Basin is graduated in oz and cc for ease of measuring large capacity (800cc) to prevent spillage contoured to fit any drainage area graduated basin increments of every 4oz and 100cc ETO or steam sterilizable up to 275oF

or 135oC avoid stacking of heavier items upon thinner walled products which may cause distortion of items packed on the bottom. 12/cs

VOL00063 10"Blue

Rectangle Wash Basin

7-1/2qt rectangle wash basin offers reinforced ridge with non-slip handle grip area for stability when carrying soap dish snaps on for convenience in bathing 7-1/2qt wash basin fits most bedside tables graduated for ease in measuring smooth for easy cleaning large enough for foot bath 50/cs

VOLH362-10 Rose



Fracture Bedpan

Vollrath Group's 34oz fracture pan features a conventional style seat and large handle for self-orientation, ease in stabilizing and will accommodate a large hand the high front prevents splashing recommended patient load 250lbs which is the government standard can be used with immobile patients and also as a female urinal

VOLH100-05 Gold



Measurite Specimin Pan with Black Graduations

Vollrath Group's improved injection molded MeasuRite Specimen Pan offers accurate urine output measurements, even at volumes as low as 50cc's- no need for additional measuring

-Black printed graduations in oz and cc are large, angled, and easy-to-read
- Ounce graduations are 2,4,6,8,10,12,16,20,24,28, 32, cc's graduated at 50, then 100-1000 in 100cc increments

-Increased wall thickness to provide improved stability during transport
-Large capacity to reduce the risk of accidental spills and permit urine output measurements up to 1000 ccs
-Molded area on the top front with space to record doctor, patient, and room
-Grooved pour spout for easy, accurate pouring of contents from front or back

-Specimen pan has a hole for convenient hanging
-Wide flange with reinforcing ridges for strength and stability when emptying pan or

carrying pan with contents
-Sturdy, stackable one-piece design that can be nested for compact storage

VOL02071 100/cs



Graduated measure, Triangular

Vollrath Group's 1000cc graduated measure/triangular aids pouring and handling clear polystyrene for ease in detecting turbidity and content level graduated in 50cc increments for ease in measuring stacking feet eliminates sticking when stacked has labeling area

VOLH970-00 200/cs



Urinals With Cover

Urinal with cover features specially designed notched handle which

conveniently hangs on all styles and sizes of bedrails handle is separate chamber, will not fill, therefore, urinals is easy to clean. Offset on handle prevents cover slipping off during use. Tight fitting cover marked urinal" to avoid other uses. Wide base improves standing stability, (empty or full) pronounced neck angle helps confine contents when urinal is positioned horizontally. Graduated in cc's and oz's on three sides for easier to read volume measurement improved smooth surface on urinal opening for comfort of patients embossed lid provides space for identifying patients. Space-saving urinal design/packing configuration reduces carton cube by more than 15% strong 25% lighter weight bottle minimizes material utilization reducing waste disposal costs while protecting the environment Improved leak resistance

VOLH140-01 50/cs



Medicine Cup

Medicine cup is graduated for easy measuring it has the important 7.5ml graduations. Top edge is smooth to the touch. Unbreak-able graduations in 1oz, 3/4oz, 1/2oz, 1/4oz, 1/8oz Drams in 8,6,4,2,1 Teaspoons 1, 1/2 Tablespoons 2,1 cc and ml in 30,25,20,15,10, 7-1/2,5

VOL02301 5000/cs

Allegiance



S/P Sample Cup

Our polypropylene sample cup is graduated in milliliters and ounces to a capacity of 30ml (1oz) 100 cups per package, 50 packages (5000 cups) per case

BGHB2719-5
S/P Sample cup

**BUSSE
Hospital Disposable**



Plastic Denture Cup

Lasts for the entire stay of the patient Turquoise cup with clear, seal-tite lid engraved "Name" and Room

BUS490 250/carton

Graham-Field

Specimen Collection Bowl

Polypropylene bowl with pouring lip designed for convenient and accurate collection and measurement of urine output. Volume calibration printed in large numbers, oz and cc
Gas sterilizable

GF3344-1 1ea



Goldnamer Ear Basin

Conforms to any ear size. One-piece, seamless white Marlex plastic light weight autoclavable and sterilizable

GF1280 1ea



Alcohol Dispenser

Polypropylene 8oz capacity dispensing unit
Hinged cover protects fluid from contamination

pump valve prevents evaporation or spillage

GF1533-1 Dispenser with "Alcohol" imprinted, 1ea

Red Rubber Inflated Ring

Soft, wash with soap, boilable
GF162#3 2-3/4", 1ea
GF1620#4 3", 1ea

Male Urinal with Cover

Easy grip open handle, hands on bed rail translucent body, gold cap graduated in oz/cc up to 1qt/1000cc

GF3201 1ea

Unisource

Plastic Cups

UNJP16 16oz, 50/sleeve, 20sl/cs, 1000/cs
UNJPC3 3.0oz, 100/sleeve, 24sl/cs, 2400/cs
UNJP35A 3.5oz, 100/sleeve, 25sl/cs, 2500/cs
UNJCDE35 3.5oz, 100/sleeve, 25sl/cs, 2500/cs
UNJFK 3.5oz, 100/sleeve, 25sl/cs, 2500/cs
UNJSWT460136 3.5oz, 100/sleeve, 25sl/cs, 2500/cs

UNJPC5 5oz, 100/sleeve, 24sl/cs, 2400/cs
UNJ5N25/3292786 5oz, 100/sleeve, 25sl/cs, 2500/cs
UNJRK5 5oz, 100/sleeve, 25sl/cs, 2500/cs
UNJCDE5 5oz, 100/sleeve, 25sl/cs, 2500/cs
UNJSWT368846 5oz, 100/sleeve, 25sl/cs, 2500/cs
UNJ7N25 7oz Plastic, Conex, 100/bx

Premium Plastics



Emesis basins

Rounded edges and flexible design facilitate handling and use ideal for containing fluids, measuring output, and routine oral care

9" Emesis Basins

PP4882-02 500cc, Turquoise, 250/cs
PP4882-11 500cc, Mauve, 250/cs
PP4882-22 500cc, ivory, 250/cs
PP4882-75 500cc, gold, 250/cs

10" Emesis Basins

PP4884-02 700cc, Turquoise, 250/cs
PP4884-11 700cc, Mauve, 250/cs

PP4884-75 700cc,
gold, 250/cs



Rectangular Wash Basin

Made from high-grade polypropylene, rectangular washbasins are ideal for everyday use select from convenient capacity sizes Gent-L-Kare 5 and 7.2-liter basins are disposable

5L Rectangular Wash Basin

PP4896-02 5L,
Turquoise, 50/cs

PP4896-75 5L, gold,
50/cs

7.2L Rectangular Wash Basin

PP4897-02 7.2L,
Turquoise, 50/cs

PP4897-11 7.2L,
Mauve, 50/cs

Round Wash Basins

An alternative to rectangular basins, Gent-L-Kare round washbasins are available in 5 and 6 L sizes made from the same high-quality polypropylene, round basins are as durable as their rectangular counterparts smooth edges serve as built-in handles making them perfect for transporting to

and from the bedside
disposable

PP4875-02 6L,
Turquoise, 50/cs



Stackable Bedpans

Gent-L-Kare stackable bedpans are great space savers. To maximize storage options, units nest nicely together select from original or commode styles both provide comfort, convenience, and fit standard commodes/toilets

PP4666-11 Mauve,
50/cs



Fracture Bedpan

Gent-L-Kare disposable fracture bedpans are designed with immobile patients in mind fracture bedpans have a tapered end for improved comfort and placement ease Plastic guard prevents spills and built-in handles simplify placement and removal

PP4665-11 Mauve,
48/cs

PP4665-75 Gold,
48/cs

PP4677-75 Gold,
12/cs

Pontoon Bedpans

Gent-L-Kare disposable pontoon styled bedpans are strong, solid, and contoured for patient comfort smooth edges facilitate handling, transporting, and emptying

PP4675-75 Gold,
20/cs



Specimen Containers w/ Liqua Guard Lid and Label

4oz sterile specimen container w/ gray Liqua lid & label each specimen container is marked in 10cc (ml) and 25oz increments up to 120 cc's. Liqua Guard lids ensure leak resistance and make them perfect for transport. Each Liqua Guard lid is engraved and provides ample space for writing the date, name, and doctor and room number. Polybagged

PP4928 4oz
Specimen Container

w/Gray Liqua Guard Lid
& Label, 100/cs



Denture Cups

Leak resistant containers specially designed for holding dentures each handy container has a printed snap-on lid providing ample room for pertinent patient information for readily identifying the containers contents, lids are clearly marked with "DENTURES" written in English, Spanish, and Polish

PP4720-02
Turquoise, 250/cs
PP4720-11
Mauve, 250/cs
PP4722
Translucent Base & Lid,
250/cs

Utility Quart Bowl

All-purpose utility bowls are ideal for holding various solutions and medical supplies. Rounded edges facilitate handling and inner surfaces of 32oz. utility bowl are graduated in 5oz and 100cc (ml) increments available in bulk or sterile packaging

PP4940-02 Sterile,
50/cs



Medicine Cup

This polypropylene 1oz medicine cup is calibrated in cc (ml's), ounces, drams, teaspoons, and tablespoons. Each medicine cup is graduated in 5cc(ml) and 1 dram (.125oz) increments up to 30cc's (ml's) or 8 drams 91oz). Convenient .5tsp, 1tsp, 2tsp, 1tbs, and 2 tbs markings are located on each medicine cup

PP4694 100/bg,
50bg/cs



Measuring Graduate Container (Triangular)

Triangular measuring graduate container, non-sterile Polystyrene bulk (20 bags of 10ea) 200/cs

PP4739
10/bg, 20bg/cs



Male Urinal

Gent-L-Kare disposable and translucent male urinals with odor shields translucent urinals permit measuring ease, visualization of contents, and are graduated in 25cc and 1 ounce increments up to 1000 cc's bulk w/liner

PP4700 50/cs

Tyco

Healthcare

Kendall



CURITY Solution Bowls

Ideal for operating/emergency rooms and general use disposable a safe, sensible alternative to stainless steel made of medical-grade polypropylene

KEN61200 32oz
Plastic Solution Bowl,
Individually Sterile
Packed, 50/cs

Stainless Patient Products

Graham-Field

Emesis Basins

Large 10"x 4-1/2"x 2-1/8", capacity 26oz
GF3232 1ea

Wash Basins

Round

GF3203 Diameter
13-1/8", 6qts capacity 1ea

Rectangular

GF3204 12-3/4"x
10"x 5-1/4"x 7-1/2" qts
capacity, 1ea

Sponge Bowls

GF3248 4-1/4"x
2" capacity 12oz, 1ea
GF3249 5-3/4"x 2-
1/2" capacity 1qt, 1ea

Iodine Cups

Small

GF3239 3-1/4"x
2" Capacity 6oz 1ea

Instrument Catheter

Tray with Flat

Cover/Recessed

GF3256 12-1/8"x
7-5/8"x 2-1/8" 1ea

Instrument Catheter

Trays with Strap

Handle Cover

GF3254 8-1/2"x
3"x 1-1/2", 1ea
GF3255 8-7/8"x
5"x 2", 1ea

Ear & Bladder Syringe

Chrome-plated comes
with one tapered and one
bulbous tip
GF2809 4oz, 1ea

Safety Pins

Stainless Steel
GF3039-2C #2,
10gross/case
GF3039-3C #3, 10
gross/case

Sundry Jars

Graham-Field

Barnes Dropping Bottle

Flint glass bottle
complete with rubber
stopper and nipple

GF3490 1oz (30ml)
capacity, 1ea

Glass Medicine Cup

Graduated with pressed
lines and figures by 1-4oz
up to 1oz, by 5ml up to
30ml by tsp and tbsp
pouring lip facilitates
usage

GF3486 144/cs

Graduated Medicine Cup

GF3241 2"x 1-
3/4" Capacity 2oz, 1ea

Labeled Sundry Jars

Fine-quality, clear flint
glass with overlapping
stainless steel covers.
Each jar permanently
imprinted in blue:
Applicators, Gauze,
tongue Depressors,
Cotton and Bandages

GF3454 Set of five
jars with covers

Sundry Jar

Unlabeled flint glass jar
with overlapping stainless
steel cover

GF3458 Unlabeled
Sundry Jar

Applicator Jar

Unlabeled Flint glass jar
with overlapping stainless
steel cover

GF3459 1ea

Unlabeled Dressing Jars With Covers

When ordering Cover
only add the letter "C" to
the end of the item
number when ordering
Jars only add the letter
"J" followed by number
1" to the end of the item
number

GF3460 3"x 3",
12/cs

GF3461 4"x 4",
6/cs

GF3462 5"x 5",
6/cs

GF3463 6"x 6",
6/cs

Tape Measures

Graham-Field

Paper Infant Tape Measure

Disposable tape measure with black markings printed on sturdy white stock graduated English scale on one side, metric scale on reverse side

GF1335
36", 1000/bx
GF1336
24", 1000/bx

Linen Tape Measure

Linen-like durable fiberglass tape graduated with inches in black on one side and centimeters in red on reverse side blank space before zero Push-button, white plastic case

GF1340-2 72", 1/4"W,
6/bx

Disposables

BANTA Healthcare Group



Pillowcases

Our disposable protective covering for pillows is constructed of various materials to meet various needs all of our pillowcases are full sized and are available in the most popular color choices

Fabricel

TID919355 Full Size, white, 21"x 30", 100/cs
Tissue Poly
TID919365 Full Size, white, 21"x 30", 100/cs



Printed Table Paper

Brush Strokes Blue, Green, mauve

TID913190 18"x 225', smooth, 12/cs

TID913220 21"x 225', smooth, 12/cs

TULIPS Blue, Green, Mauve

TID913189 18"x 225', smooth, 6/cs

TID913219 21"x 225', smooth, 6/cs

TID16189 18"x125', Crepe, 6/cs

TID916219 21"x125', Crepe, 6/cs



Pediatric, TIDI-SAU-RUS Red, yellow, Blue

TID911518 18"x225', smooth, 6/cs

TID911521 21"x225', smooth, 6/cs

TID911418 18"x225', Crepe, 6/cs



KAYPEES Towels

Kaypees are the top-of-the-line in low linting, extra absorbent towels These 13"x17.5"towels come in a handy dispenser box that dispenses one towel at a time

Dispenser Box, Deluxe, 50/bx, 10bx/cs

TID911898 White, 13"x 17-1/2"

TID911900 Blue, 13"x 17-1/2"



All Tissue 2 Ply Patient Drape Sheets

The 2 Ply All Tissue Drape Sheets are soft, opaque tissue delicately embossed designed for short to moderate exams these Drape Sheets come in a variety of pastel colors and prints

TID918330 Brush Strokes, 40"x 48"Multi-Color, 100/cs



**Tissue Poly Tissue
Exam Gowns & Capes**

The Tissue Poly Tissue construction places a layer of poly film between two layers of absorbent tissue for added strength that will not tear during extended exams

Exam Gown, Front/Back Opening, 50/cs
TID910536 Mauve, 30"x 42"

Brush Strokes
TID910550 Gown, Brush Strokes, Multi-Color

TID910555 Cape, Brush Strokes, Multi-color

Exam Cape, Side-Opening, 200/cs
TID918230 White, 19"x 22"

**Graham
Professional
Medical Products**

Examination Capes & Gowns

Graham capes and gowns come in all sizes and strengths to meet many office and patient needs from our cost effective 3-ply tissue, to our sturdy scrim reinforced gown, to our soft quiet nonwovens, there's a Graham cape or

gown to cover every-body



Capes

GRM200 Fabri-Soft/TPT, 30"x 21", white, 100/cs

GRM202 Fabri-Soft Cape/TPT, Side opening, 19"x 21", white, 100/cs

GRM203 3-Ply Tissue, 30"x 21", Mauve, 100/cs

GRM204 Super Fabri-Soft/TPT, 30"x 21", blue, 100/cs

GRM207 Fabri-Soft/TPT, 30"x 21", Peach, 100/cs

GRM208 3-Ply Tissue, 30"x 21", Peach, 100/cs

GRM209 Fabri-Soft/TPT, 30"x 21", Wildflower, 75/cs

GRM213 Fabri-Soft/TPT, 30"x 21", Mauve, 100/cs

GRM216 Scrim Reinforced, 30"x 21" Blue, 75/cs

GRM218 Breast/TPT, 28"x 25", blue, 75/cs

GRM219 Fabri-Soft/TPT, 30"x 21", blue, 100/cs

GRM270 Fabri-Cape/TPT, 30"x 21", Seascape, 75/cs

GRM15568 Extra Coverage Poncho, Scrim Reinforced, 56"x 28" blue, 50/cs

GRM29047 Poncho Style, Scrim Reinforced, 48"x 23", Mauve, 25/cs



Gowns

GRM220 Fabri-Soft/TPT, 30"x 42", white, 50/cs

GRM222 3-Ply Tissue, 30"x 42", blue, 50/cs

GRM223 3-Ply Tissue, 30"x 42", Mauve, 50/cs

GRM226 Plasbak/TP, 30"x 42", blue, 50/cs

GRM228 Scrim Reinforced, 30"x 42", blue, 50/cs

GRM229 Fabri-Soft/TPT, 30"x 42", blue, 50/cs

GRM230 Multiphasic X-Ray, heavy-weight, scrim reinforced, sewn shoulders, 30"x 42", blue, 50/cs

GRM231 Super Fabri-Soft /TPT, 30"x 42", Blue, 50/cs

GRM232 Webtex Scrim Reinforced, 30"x 42", blue, 50/cs

GRM234 Nonwoven /Attached Belt/sewn

shoulder, 30"x 42", blue,
50/cs

GRM237 Fabri-
Soft/TPT, 30"x 42",
peach, 50/cs

GRM238 3-Ply
Tissue, 30"x 42", peach,
50/cs

GRM239 Fabri-
Soft/TPT, 30"x 42",
wildflower, 50/cs

GRM243 Fabri-
Soft/TPT, 30"x 42",
mauve, 50/cs

GRM260 Extra-
Large, Scrim reinforced,
sewn shoulder sewn neck
tie, 36"x 45", blue, 25/cs

GRM261 Regular
size, Scrim-reinforced,
sewn shoulder, sewn
necktie, 30"x 45", blue,
25/cs

GRM271 Fabri-Soft
Gown/TPT, 30"x 42",
Seascape, 50/cs

GRM280 Fabri-Soft
Pediatric/TPT, 20"x 36",
Pediatric Print, white,
50/cs

GRM281 Fabri-Soft
Pediatric/TPT, 20"x 36",
white, 50/cs

GRM283 Fabri-Soft
Pediatric/TPT, 20"x 36",
Activity Bears, 50/cs

GRM16083 Fabri-Soft
Pediatric/TPT, 20"x 36",
Grahamatians, 50/cs

GRM37235 Fabri-Soft
Pediatric/TPT, 20"x 36",
Tyni Tracks, 50/cs

GRM44507 Apex,
Blue, 50/cs



Specialty Garments

Graham is pleased to offer several unique products for a wide variety of special exam needs

Protective Gowns

GRM241 Non-
Woven, Sewn, Elastic
Cuff, 28"x 42", yellow,
50/cs

GRM290 Poly-
Coated Spun bound,
Elastic Cuff, 28"x 44",
blue, 25/cs

GRM294 Large All-
Poly, Back Opening,
Thumb Loops, 42"x 49",
blue, 75/cs

GRM960 Adult Bib,
19-1/2"x 28", white,
500/cs

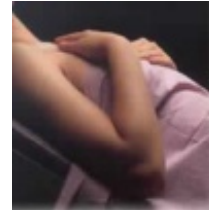


Exam Shorts

Graham's exam shorts offer the ultimate in comfort and modesty the dark blue opaque Nonwoven garment is the ideal choice for any exam, two sizes with latex-free sewn elastic waistband ensure a perfect fit for every body type

GRM10000 Exam
Shorts, Sm/Med (fits 18"-
44"waist), 50/cs

GRM10001 Exam
Shorts, Lg/ X-Lg (fits
22"-48"waist), 50/cs



Exam Drapes & Stretcher Sheets

For rigorous, for emergency conditions, these strong single use stretcher sheets are linen soft and fit every stretcher in use whatever the situation, Graham has a stretcher sheet to fit your needs

Tissue Fan-Fold

GRM308 2-ply,
36"x 48", white, 100/cs

GRM316 Super 2-
ply, 40"x 60", white,
100/cs

GRM339 2-ply,
40"x 48", white, 100/cs

GRM342 2-ply,
40"x 60", white, 100/cs

Tissue

GRM301 2-ply,
40"x60", white, 100/cs

GRM302 3-ply,
40"x 48", white, 100/cs

GRM303 3-ply,
40"x 60", white, 100/cs

GRM313 2-ply,
40"x 48", Mauve, 100/cs

GRM319 2-ply,
40"x 48", wildflower,
100/cs

GRM325 2-ply,
40"x 48", Seascape,
100/cs
GRM328 2-ply,
40"x 48", peach, 100/cs
GRM340 3-ply,
12"x 24", white, 500/cs
GRM344 2-ply,
24"x 40", white, 200/cs
GRM349 2-ply,
40"x 60", wildflower,
100/cs

Tissue/Poly/Tissue Fan-Fold

GRM317 T/P/T,
40"x 48", blue, 50/cs
GRM318 T/P/T,
40"x 60", blue, 50/cs

Plasbak – Tissue/Poly

GRM320 T/P, 40"x
48", white/blue, 100/cs
GRM47258 Apex 2-
ply, 40"x 48", 100/cs

Stretcher and Bed Sheets White Tissue

GRM304 Stretcher
sheet (3-ply), 40"x 72",
white, 50/cs
GRM305 Stretcher
Sheet (3-ply), 40"x 90",
white, 50/cs

Tissue/Poly/Tissue – Fanfold (Sleeve Packages)

GRM324 Stretcher
Sheet (TPT), 40"x 72",
blue, 48/cs

GRM329 Stretcher
Sheet (TPT), 40"x 84",
blue, 48/cs

GRM332 Stretcher
Sheet (TPT), 40"x 96",
blue, 48/cs

Premium

GRM330 Webtex,
40"x 72", blue, 25/cs

GRM331 Webtex,
40"x 96", blue, 25/cs

Plasbak

GRM322 Stretcher
Sheet (Tissue/Poly), 40"x
72", White/Blue, 50/cs

GRM323 Stretcher
Sheet (Tissue/Poly), 40"x
90", White/Blue, 50/cs



Pillow Cases

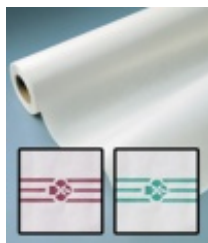
GRM354 Non-
woven pillowcase, 21"x
30", White, 100/cs

GRM360 Tissue/
Poly Pillowcase 21"x
30", white, 100/cs

GRM356 Softcell
Pillowcase Flame
Retardant Treated, 21"x
30", white, 100/cs

GRM357 Softcell
Pillowcase, Flame
Retardant Treated, 21"x
30", Aqua, 100/cs

GRM42426 Spun
bound Pillowcase, 21' x
30", 100/cs



Exam Table Paper

More physician offices
use Graham we control
the quality from start to
finish through our own
paper mills our specialty,
made for medical use,

paper provides the finest
protection for patients

Crepe Exam Rolls

GRM001 Crepe, 14-
1/2"x 125', white, 12/cs

GRM003 Crepe,
20"x 125', white, 12/cs

GRM007 Crepe,
24"x 125', white, 12/cs

Smooth Exam Rolls

GRM015 Smooth,
14-1/2"x 225', white,
12/cs

GRM017 Smooth,
20"x 225', white, 12/cs

Poly-Perf Exam Rolls (tissue/poly)

GRM072 Poly-perf,
18"x 125', white, 9/cs

GRM073 Poly-perf,
21"x 125', white, 9/cs

Border Print Exam Rolls

GRM050 Crepe,
18"x 125', Mauve/
White, 12/cs

GRM051 Crepe,
21"x 125', Mauve/
White, 12/cs

GRM058 Smooth,
18"x 225', Mauve/
White, 12/cs

GRM059 Smooth,
21"x 225', Mauve/
White, 12/cs

Nature Prints

GRM063 Crepe, 18"
x 125, Seascape print,
12/cs

GRM067 Crepe,
21"x 125', Seascape
Print, 12/cs

GRM065 Smooth,
18"x 225', Seascape
Print, 12/cs

GRM066 Smooth,
21"x 225', Seascape
print, 12/cs

GRM078 Smooth, 18"x 225', Wildflower print, 12/cs
 GRM079 Smooth, 21"x 225', Wildflower Print, 12/cs
Seasonal Prints
 GRM29041 Summer Breeze, Crepe, 18"x 125', 12/cs
 GRM29042 Summer Breeze, Crepe, 21"x 125', 12/cs
 GRM22480 Winter Wonderland, Crepe, 18"x 125', 12/cs
 GRM22481 Winter Wonderland, Crepe, 21"x 125', 12/cs
Rose Garden
 GRM46845 Smooth, 21"x 225', 12/cs
Pediatric Prints
 GRM080 Crepe, 14-1/2"x 125', Blue Pediatric Print, 12/cs
 GRM081 Crepe, 18"x 125', blue Pediatric Print, 12/cs
 GRM084 Crepe, 14-1/2"x 125', Activity Bears Print, 12/cs
 GRM085 Crepe, 18"x 125', Activity Bears Print, 12/cs
 GRM086 Crepe, 21"x 125', Activity Bears Print, 12/cs
 GRM16075 Crepe, 18"x 125', Grahamations print, 12/cs
 GRM16069 Crepe, 21"x 125', Grahamations Print, 12/cs
 GRM37239 Crepe, 14-1/2"x 125', Tiny Tracks Print, 12/cs

GRM37238 Crepe, 18"x 125', Tiny Tracks print, 12/cs
 GRM37236 Crepe, 21"x 125', Tiny Tracks Print, 12/cs
Chiropractic Headrest Rolls & Sheets
 GRM090 Smooth, 8-1/2"x 225', white, 25/cs
Pre-Cut Sheets
 GRM901 Crepe Sheets, 20"x 30", white, 1000/cs
Apex
 GRM42529 Crepe, 18"
 GRM42530 Crepe, 21"
 GRM42531 Smooth, 18"
 GRM42532 Crepe, 21"



Professional Towels & Washcloths

All Graham towels offer you the right combination of strength and absorbency for any clinical setting available with polyback for additional protection or without when its not needed Graham towels and washcloths come in a variety of styles, textures and supplies for all your needs

Swab-ee Professional Towels

GRM160 3-ply tissue edge embossed, 13-1/2"x 18", White, 500/cs

GRM171 3-ply tissue overall embossed, 13-1/2"x 18", blue, 500/cs
 GRM172 3-ply tissue overall embossed, 13-1/2"x 18", Green, 500/cs
 GRM173 3-ply tissue overall embossed, 13-1/2"x 18", Mauve, 500/cs
 GRM174 Super 2-ply tissue, 13"x 17", white, 500/cs
 GRM177 3-ply tissue overall embossed 13-1/2"x 18", Seascape, 500/cs
Plasbak Protective Towels (Non-autoclavable)
 GRM138 3-ply tissue polyback, 13-1/2"x 18", Mauve, 500/cs
 GRM180 3-ply tissue polyback, 13-1/2"x 18", white, 500/cs
 GRM181 3-ply tissue polyback, 13-1/2"x 18", blue, 500/cs
 GRM182 3-ply tissue polyback, 13-1/2"x 18", Green, 500/cs
 GRM183 2-ply tissue polyback, 13-1/2"x 18', white, 500/cs
 GRM184 2-ply tissue polyback, 13-1/2"x 18", blue, 500/cs
 GRM186 2-ply tissue polyback, 17"x 18", white, 500/cs
 GRM193 2-ply tissue polyback, 13-1/2"x 18", Mauve, 500/cs
 GRM196 2-ply tissue polyback, 13-1/2"x

18", Activity Bears,
500/cs
GRM37234 2-ply
tissue polyback, 13-1/2"x
18", Tiny Tracks, 500/cs
Footprint Podiatry Towels
GRM190 3-ply
tissue/polyback, 13-1/2"x
18", white/blue, 500/cs
GRM191 3-ply
tissue, 13-1/2"x 18",

white/blue, 500/cs
Dispenser Towels
GRM580 Multi-fold
towels, 9-1/8"x 9-1/2",
white, 4000/cs

Towel Dispensers
GRM951W C-fold,
8"x 11"x 3-3/4", white
enamel, 6/cs
GRM951B C-fold,
8"x 11"x 3-3/4", Brushed
Chrome, 6/cs

Washcloths
GRM408 Nonwoven
Washcloth, 10"x 13-1/2",
blue, 500/cs (10 packs of
50)



Lab Coats

Graham's staff apparel
gives all medical
professionals the comfort
and convenience of a
disposable with a
professional look lab
coats are designed for use
over street clothes yet
allow full freedom of
movement

GRM254 Spun
bound, Knit Cuff,
Sm/Med, white, 10/cs
GRM255 Spun
bound; knit Cuff, Lg/X-
Lg, white, 10/cs

Kimberly-Clark Corporation



Kimberly-Clark Lab Coats and Jackets

Lab Jackets with Knit Collar and Cuffs

KC10071 White,
Medium 25/cs
KC10072 White,
large 25/cs
KC10073 White, X-
Large 25/cs
KC10091 Blue,
Medium 25/cs
KC10092 Blue,
Large 25/cs

Lab Coats with Knit Cuffs, White 3 layer fabric with 6 snaps and 3 pocket- size/name label

KC10041 Medium,
Universal, 25/cs
KC10042 Large,
Universal, 25/cs
KC10043 X-large,
Universal, 25/cs

Basic plus Lab Coats with Knit Collar and Cuffs, White

KC10021 Medium,
25/cs

Stretcher Sheets

KC67103 40"x 96",
Blue

Pillowcases

KC67803 20"x 29",
blue, 200/cs

Graham-Field

Disposable Apron

Full size poly apron
GF3825 28"x 46",
500/bx

Neck-Clasp Apron

Comfortable neckband
with Velcro type closure
fits snugly without
pressure
GF3853 54"x 36",
1ea

Lens Paper

50 soft, thin, silky paper
sheets
GF3719 4"x 6",
1ea

Printed Pill Envelope

Apply moisture to seal 3-
1/2"x 2-1/2"
GF9600 1000/bx

Unisource

Drinking Straws

UNJ381 Flexible,
400 Straws/bx, 25bx/cs

Feminine Hygiene

UNJ147 Maxi
Guard Pad

Grocery Bags

UNJ500305 #5, 500/bx
UNJ3322041/3906633
#6, Brown, 500/bx
UNJ3325029 #6, White,
500/bx

Waste Bags

UNJPL2-2411
15x9x23, 10 Gal, Light,
Black, Flat Case, 100/cs
UNJHF243308N
15x9x23, 16 Gal, Light,
Clear, Flat Case, 1000/cs
UNJS32WXHR
15x9x23, 16 Gal, X-
Heavy, White, Flat Case,
500/cs
UNJBH37
16x14x36, 30 Gal,
Heavy, Black, Flat Case,
250/cs
UNJPG2-3730
16x14x36, Gal, Heavy,
Black, Flat Case, 250/cs
UNJG2-3741
16x14x36, 30 Gal,
Heavy, Black, Flat Case,
250/cs
UNJPG6-3741
16x14x36, 30 Gal,
Heavy, Black, Flat Case,
250/cs
UNJ303710N
16x14x36, 30 Gal, Light,
Clear, Flat Case, 500/cs
UNJ3370173
16x14x36, 30 Gal,
Medium, Black, Flat case,
250/cs
UNJSU36BKH
16x14x36, 30 Gal, X-
Heavy, Black, Flat Case,
200/cs
UNR36W/LSCP3036XW
16x14x30, 30 Gal, X-
Heavy, Black, Roll, 75/cs

UNJLSF3036XW
16x14x36, 30 Gal, X-
Heavy, White, Flat Case,
200/cs
UNJ3378091
16x14x36, 30 Gal, X-
Heavy, Flat Case, 200/cs
UNJS-36W-XHR
16x14x36, 30 Gal, X-
Heavy, White, Flat Case,
200/cs
UNJ3481389
16x14x36, 30 Gal, X-
Heavy, White, Flat Case,
200/cs
UNJPG-6060
22x16x58
UNJSCP3858XW
22x16x58, 55 Gal, X-
Heavy, White, Roll,
100/cs
UNJPG2-6161
22x16x58, 60 Gal,
Heavy, Black, Flat Case,
200/cs
UNJS-1658WXHR
22x16x58, 60 Gal, X-
Heavy, White, Flat Case,
100/cs
UNJ3481371
22x16x258, 60 Gal, X-
Heavy, White, Flat Case,
100/cs
UNJPG6-4061
23x10x36, 33 Gal,
Heavy, Black, Flat Case,
250/cs
UNJTL2055
23x10x39, 33 Gal, Light
Black, Flat Case, 250/cs
UNJS-46HR-BK
23x17x46, 45 Gal,
Heavy, Black, Flat Case,
100/cs
UNJPH8-4048

23x17x46, 45 Gal,
Heavy, Black, Flat Case,
125/cs
UNJBH48
23x17x46, 45 Gal,
Heavy, Black, Flat Case,
128/cs
UNJLSF4046HB
23x17x46, 45 Gal,
Heavy, Black, Flat Case,
128/cs
UNJS-46W-XHR
23x17x46, 45 Gal, heavy,
White, Flat Case, 100/cs
UNJ3370356
23x17x46, 45 Gal,
Medium Black, Flat case,
250/cs
UNJLSF4046XW
23x17x46, Gal, X-Heavy,
White, Flat Case, 100/cs
UNJ3378088
23x17x46, 45 gal, X-
Heavy, White, Flat Case,
100/cs
UNJSU46BKH
23x17x46, 45 Gal, X-
Heavy, black, Flat Case,
100/cs

Foam Cups

UNJ12J12
12oz 25/sleeve, 1000/cs
UNJ16TA/16J16
16oz 25/sleeve, 1000/cs
UNJ6J6
6oz 25/sleeve, 1000/cs
UNJ8J8
8oz. 25/sleeve, 1000/cs
UNJ75
.75oz Paper Souffle,
250/slv, 5000/cs

Paper Cups

UNJR12N

12oz, 100/sleeve, 20sl/cs,
2000/cs
UNJR3
3oz, 100/sleeve, 50sl/cs,
5000/cs
UNJR4
4oz, 100/sleeve, 50sl/cs,
5000/cs
UNJR53
5oz, 100/sleeve, 30sl/cs,
3000/cs
UNJR6NN
6oz, 100/sleeve, 20sl/cs,
2000/cs
UNJR8N
8oz, 100/sleeve, 20sl/cs,
2000/cs
UNJR9N
9oz, 100/sleeve, 20sl/cs,
2000/cs
UNJ378MR
8oz, Hot Liquid
UNJ36D3506
5oz, Cold Liquid, 2400/cs
UNJ450/4557419
3.25oz, 100's

Towels

UNJCB520
C-Fold, 10.4"x 13.25", 1-
ply, White, 150 sheets/pk,
16pk/cs 2400 sheets/cs
UNJ2920
C-Fold, 10.4"x 13.25", 1-
ply, white, 150 sheets/pk,
16pk/cs 2400 sheets/cs
UNJ1510
C-Fold, 10.4"x 13.25", 1-
ply, White, Scott, 150
sheets/pk, 16pk/cs 2400
sheets/cs
UNJNRP347
C-Fold, 10.4"x 13.3", 1-
ply, White, 150sht/pk,
16pk/cs, 2400sht/cs
UNJ4124178/4374997

C-Fold, 10.4"x13.3", 1-
ply, white, 150 sheets/pk,
16pk/cs, 2400 sheets/cs
UNJ1500
C-Fold, 10.4"x 13.3", 1-
ply, white, Kleenex, 150
sheets/pk, 16pk/cs, 2400
sheets/cs
UNJ230-00
C-Fold, 10.4"x13.3", 1-
ply, White, Preference
Ultra, 120 sheets/pk,
12pk/cs, 1440 sheets/cs
UNJ101764
C-Fold, Décor, 2400/cs
UNJ1804
Multi-Fold, 9.25"x 9.4",
1ply, White, Scott, 200
sheets/pk, 20pk/cs, 4000
sheets/cs
UNJ1890
Multi-Fold, 9.3"x 9.4", 1-
ply, White, Kleenex, 120
sheets/pk, 20pk/cs, 2400
sheets/cs
UNJ210-00
Multi-Fold, 9.3"x9.4", 1-
ply, White, Preference
Ultra, 125 sheets/pk,
16pk/cs, 2000 sheets/cs
UNJ1999
Multi-Fold, 9.3"x 9.4", 1-
ply, White, Scott Fold,
120 sheets/pk, 16pk/cs,
1920 sheets/cs
UNJ1814
Multi-Fold, 9.3"x 9.4", 1-
ply, White, Tradition, 225
sheets/pk, 16pk/cs, 3600
sheets/cs
UNJ245-90
Multi-Fold
UNJ243-91
Multi-Fold
UNJ5770

Professional white,
12"x23", 45/pk, 12pk/cs
UNJ340
Roll, White, 10.5"x11",
Kleenex Premiere, 70
sheets/rl, 30 rolls/cs
UNJ3478
Roll White, 10.5"x11',
Kleenex Premiere, 70
sheets/rl, 30 rolls/cs
UNJ273
Roll White, 100 sheets/rl,
and 30 rolls/cs
UNJ279-90
Roll White, 100 sheets/rl,
and 30 rolls/cs
UNJHM9201
Roll White, 100 sheets/rl,
and 30 rolls/cs
UNJ1482
Roll White, 11"x9.375',
Scott Scottex, 90 sheets/rl
and 30 rolls/cs
UNJ4181
Roll White, 9.4"x 11",
Tradition, 120 sheets/rl,
24 rolls/cs
UNJ63037
Roll White, Bounty, 72
sheets/rl, and 30 rolls/cs
UNJ786
Single-Fold, 10.5"x9.3",
1-ply, white, 250
sheets/pk, 16pk/cs, 4000
sheets/cs
UNJ1700
Single-Fold, 10.5"x9.3",
1-ply, White, Tradition

Tyco
Healthcare

Kendall



EXCILON Washcloths

Deluxe style, heavy absorbency these soft yet highly absorbent cloths are Kendall's strongest and most versatile EXCILON Washcloths are ideal as general purpose facecloths, hand towels or for incontinent care

KEN6040 Novonette Finish, White, 10"x13", 50/bg, 12bg/cs



WINGS Washcloth Pre-moistened

Specially formulated for incontinent clean-up and geriatric skin, WINGS Washcloths help moisturize the skin with the benefits of Aloe Vera as they work No rinsing or drying in necessary

KEN6599 pre-moistened, 9-1/2' x 13", 64/tub, 8 tubs/cs



CURITY Abdominal Pads

All four edges sealed to prevent lint residue and leaking soft, non-woven layer for patient comfort and fluff filter for absorbency

Sterile 1's in Peel-Back Package

Ken7196 5"x 9", 400/cs
KEN7198 5"x10", 320/cs



CURITY Maternity Pads

CURITY Maternity Pads provide exceptional softness, comfort and absorbency for postpartum care, with a unique moisture barrier that helps prevent strike-through and an innovative fluid disperement system that promotes maximum absorbency

KEN1375 maternity Length 12/bg, 24bg/cs



MAXI CARE Belted Undergarments

Wide belts make garment more comfortable to wear one-size fits all contains Poly-Fresh super

absorbent polymer for maximum dryness

KEN171B10 Super Absorbency, one size fits all, 10/bg, 12 sleeves/cs



Wings Plus Underpad

Dryness enhanced top sheet unique polymer and layered tissue polypropylene backing

KEN7158 30"x 30" layered Nonwoven, Bulk, 75/cs



Wings Maxima Underpad

Dryness enhanced top sheet super absorbent polymer and odor controlling agent fluff filler polypropylene backing available in 30"x 30" or 30"x 36

KEN6569 30"x 30" Fluff Nonwoven, Bulk, 60/cs



Adult Brief with Flat Fold Design

Traditional flat fold design with refastenable tape tabs offers versatility in use as either a brief or an underpad

UNIGARD Plus
KEN6229 UNI-SIZE,
White Bulk, 100/cs



WINGS Classic Adult Brief with Full Fit Design

Full fit design provides complete coverage and maximum absorbency features include breathable topsheet, poly-fresh super-absorbent polymers, blue dryness strip, and extra fluff in the wing areas odor reducing agent

KEN60002 Small,
Peach, 12/bg, 8bg/cs
KEN60003 Medium,
White, 12/bg, 8bg/cs
KEN60004 Large,
blue, 12/bg, 8bg/cs



WINGS Choice Adult Briefs

Extra soft, breathable stay-dry facing enhances patient comfort moisture-

proof backing and elastic leg gathers provide superior protection, and builtin wetness sensor indicates the need to change contain Poly-Fresh super absorbent polymer for extra dryness and odor control sturdy refastenable tape tabs ensure a secure fit blue dryness strip diamond and linear embossing provides maximum pad stability and utilization

KEN60033 Medium,
White, 12/bg, 8bg/cs
KEN60034 Large,
Blue, 12/bg, 6bg/cs
KEN60035 X-Large,
Beige, 12/bg, 5bg/cs
KEN60043 Medium,
White, 12/bg, 8bg/cs
KEN60044 Large
Briefs, Blue, 12/bg,
8bg/cs



SLIP-ON Undergarments

Styled with the look and fit of regular underwear, with a comfortable waistband and easy pull-on style that eliminate the need for buttons, straps or tapes contain Poly-Fresh super absorbent polymers for maximum fluid retention while reducing

odor and keeping wetness away from skin soft, cloth-like facing and backing provide comfort, dignity and discretion for active individuals blue barrier leg cuffs provide extra leakage protection and enhance dryness feature a tear-away side seam on the waistband for quick and easy garment changes

KEN1505 Super
Absorbency One size fits
all, 26/bg, 4bg/cs



WINGS Supreme Adult Brief With Waistband

Poly-Fresh Super-absorbent polymers lock in fluid for maximum absorption aiding patient comfort and skin protection advanced design features include a flexible waistband and six adjustable tape tabs that provide superior fit and security blue dryness strip promotes optimum skin care

KEN9501 Medium,
White, 12/bg, 8bg/cs
KEN9502 large, blue,
12/bg, 6bg/cs



Underpads

DURASORB Pus Fluff Filled w/Nonwoven

Topsheet

KEN7193 23"x36",
Bulk, 75/cs

DURASORB Fluff Filled w/Nonwoven Topsheet

KEN949 17"x24",
Bulk, 300/cs

KEN1038 23"x24",
Bulk, 200/cs

KEN6349 23"x24",
10/bg, 20bg/cs

KEN1093 23"x36",
Bulk, 150/cs

TENDERSORB Fluff Filled W/Nonwoven

Topsheet

KEN7105 17"x24",
Bulk, 300/cs

KEN7134 23"x24",
Bulk, 200/cs

KEN7136 23"x24",
10/bg, 20bg/cs

KEN7174 23"x36",
Bulk, 150/cs

KEN7176 23"x36",
10/bg, 15bg/cs

SURE CARE Retail

KEN1545 17"x24",
36/bg, 3 Printed bg/cs

KEN1547 23"x24",
30/bg, 3 Printed bg/cs

KEN1550 23"x36",
18/bg, Printed bg/cs

FQP

**First Quality Products,
Inc**



Prevail Frontal Tape Briefs

New frontal Tape Briefs with reinforced areas provide improved reseal-ability wearers who wore the large size brief can now wear the new regular which fit better resulting in fewer leaks and a 10% cost savings great for bowel and bladder training programs

FQPIBF-012

Prevail, Medium (Waist Size: 32"-44") 12/bg, 8bg/cs

FQPIBF-016

Prevail, Regular (Waist Size: 40"-48"), 10/bg, 8bg/cs

FQPIBF-013 Prevail Large (Waist Size: 45"-58"), 12/bg, 6bg/cs

SCA

Harmonie Underpads

The extra-quilted mat provides enhanced fluid dispersion interior liner is soft, vented and non-irritating to user's skin the outer barrier is soft and resistant to protect against latex sensitivities, all Harmonie products and packaging are Latex-free

SCA353 17"x24",
300/cs

SCA355 23"x36",
150/cs



TENA Classic Plus Brief

The Dry-Fast Dual Core quickly absorbs fluid for greater security and increased skin dryness curved elastics provide a snug fit for greater leakage protection and comfort superfit. Refastenable Tape Zone allows for multiple repositioning of tape tabs for a better fit and less waste the wetness indicator signals when brief should be changed to protect against latex sensitivities, all TENA products and packaging are latex-free

SCA61325 Med: 34-47", 96/cs

SCA61335 Large: 48"-59", 72/cs

Superior Uniform Group



Fashion Seal Patient Gowns

Snowflake print patient gown, 50% polyester/50% cotton. Center back closure with ties. 45"length, 55"sweep

FS773L

Large, 2" insleeve

FS736L

Large, 6"insleeve

Reusable Pillowcases

Graham-Field

Pillow Cases

Fits standard size pillow
GF3857 21"x27",
Zipper Closure

Facial Tissue

Kimberly-Clark Corporation



KLEENEX Facial Tissue

White, Dispenser size boxes

KC21606 8-1/2"x 8-3/4", 2-ply 125/bx, 48/cs

KC21400 9"x8", 100/bx, 36/cs

Unisource

Facial Tissue

UNJTF6810 White, 7.8"x8.4", 2-ply, 100 sheets/bx, 30bx/cs
UNJ470-00 White, 7.8"x8.4", 2-ply, 100 sheets/bx, 30bx/cs
UNJ21340 White, 7.8"x 8.4", 2-ply, Surpass, 100 sheets/bx, 30bx/cs
UNJ21195 White, 8.4"x 6", 2-ply, Kleenex junior, 65 sheets/bx, 48bx/cs
UNJ21400 White, 8.4"x 8.6", 2-ply, Kleenex, 100 sheets/bx, 36bx/cs
UNJ21606 White, 8.4"x 8.6", 2-ply, Kleenex, 125 sheets/bx, 48bx/cs
UNJ21270 White, 8.4"x 8.6", 2-ply, Kleenex Boutique, decorative Box, 95 sheets/bx, 36bx/cs
UNJ21269 White, 8.4"x 8.6", 2-ply, Kleenex Boutique, Floral Box, 95 sheets/bx, 36bx/cs

Toilet Tissue

Kimberly-Clark Corporation

KLEENEX Toilet Tissue

White, 2-ply sheets
KC07713 96/cs

Unisource

Toilet Tissue

UNJ175-00 2-PLY
UNJ4072 Standard Roll, 4.5"x 4.4", 2-ply, white, 380 sheets/rl, 48rl/cs
UNJTM612 Standard Roll, 4.5"x 4.4", 2-ply, white, 500 sheets/rl, 96rl/cs
UNJ165-90 Standard Roll, 4.5"x 4.4", 2-ply, white, 500 sheets/rl, 96 rl/cs
UNJ7713 Standard Roll, 4.5"x 4.4", 2-ply, white, Kleenex Cottonelle, 400 sheets/rl, 96 rl/cs
UNJ4460 Tissue Toilet Standard Roll, 4.5"x4.4", 2-ply, white, Surpass, 500 sheets/rl 96rl/cs

Toilet Seat Covers

UNJ7400 1/2 fold, 15"x 18", white, 125 sheets/bx, 24bx/cs, 3000/cs
UNJ973 1/2 fold, 15"x 18", white, 250 sheets/bx, 20bx/cs, 5000/cs
UNJ39J1012 1/2 Fold, 15"x 18", white, 250 sheets/bx, 20bx/cs, 5000/cs
UNJ7410 Lever Dispensed, 15"x 18", white, Scott personal Seats, 125 sheets/bx, 24bx/cs