

Urology

BAGS

Allegiance

Urinary Drainage Bags with Antireflux Chamber with SPLASHGUARD II Drain Spout

(Kendall) These drainage bags offer a SPLASHGUARD II spout that makes drainage easy and helps protect you from contact with potentially hazardous body fluids the Antireflux chamber minimizes urine backflow each bag includes nylon hook handing device and string hanger that fit securely on bedrails and wheelchairs, urine sampling port and 11/32" tubing sterile bags packaged individually 20 bags/cs

BGHKB5900 poly bag PK only



Drainage Bag w/ Mono-Flo Antireflux II Drain Spout

(Kendall) This 2L drainage bag features a Mono-Flo Antireflux device that automatically

closes when you tilt, lift or lay the bag on its side, helping prevent urine backflow
SPLASHGUARD II drain spout makes drainage easy and helps protect you from contact with potentially hazardous body fluids universal hanging device fits easily over the bedrail and doubles as a carrying handle for ambulatory patients each sterile, individually packaged bag is supplied with 11/32" tubing, nylon hook handing device and string hanger 20 bags/cs

BGHKB5912 Drainage bag



Leg Bags

Our leg bags feature an Antireflux valve, universal connections, a twist open drainage valve and adjustable leg straps with buttons bags are individually packaged with a sterile fluid path

BGHP4015M Medium, 500cc, 40/cs

BGHP4017L Large, 1000cc, 40/cs

BARD

Dispoz-a-Bag Leg Bags

Made from heavy duty plastic film for long wear time, odor containment and leak resistance each leg bag contains an anti-reflux valve reusable, sterile

BAR150102 19oz, 48/cs

BAR150103 32oz, 48/cs



Center-Entry Urine Drainage Bag

- Bard Safe Sampling Port allows for needle-free aspiration
- Anti-Reflux device
- Double hook hanger
- Single-use, sterile

BAR153504 2000ml



Urine Drainage bag with Anti-Reflux Chamber

- Bard Safe sampling Port allows for needle-free aspiration
- Single hook design with string hanger single-use, sterile

BAR154002 2000ml,
20/cs

Tyco
Healthcare

Kendall



CURITY Urine Leg Bags

Anti-Reflux valve longer catheter adapter for greater security with all types of catheters twist valve for easier emptying and less spill, no bottom cap to lose or misplace soft, cloth straps latex-free leg straps

KEN145516 Large
32oz/ 1000ml, 50/cs



KENGUARD Anti-Reflux Chamber Urinary Drain Bags

Contoured design for more even filling and complete emptying 11/32" drainage tube provides quick drainage, eliminates standing column of urine universal hanger fits securely on bedrails and wheelchairs convenient carrying handle for ambulatory patients

KEN3512V 2000ml bag with Anti-reflux chamber and VELCRO hanger

KEN3502 2000ml bag without anti-reflux chamber, 20/cs



CURITY mono-Flo Anti-reflux Device Drain Bag with SAFEGUARD II Drainage Device

Mono-Flo Anti-Reflux valve automatically closes when bag is tilted, lifted, or laid on side large diameter drip chamber provides dry barrier against bacteria, facilitates passage of clots Splashguard II Drainage Device prevents backsplash of urine SAFEGUARD Needles less sampling port prevents needle sticks

KEN6300 2000ml MONO-FLO, Polybag package, 20/cs

KEN6206 2000ml Anti-reflux chamber with SPLASHGUARD II, CSR Wrap, 20/cs

Catheters

Allegiance



Siliconized Latex Foley Catheters

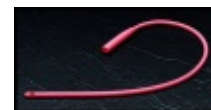
Our catheters feature high-quality natural latex that provides patient comfort while remaining sufficiently firm for insertion 12 catheters per case

2-way catheters with 5cc balloon

- BGHPE512 12
- BGHPE514 14
- BGHPE516 16
- BGHPE518 18
- BGHPE520 20
- BGHPE522 22

2-way catheters with 30cc balloon

- BGHPE616 16
- BGHPE618 18



Red Rubber urethral Catheters

Our red rubber urethral catheters are made of X-ray-opaque latex, which is soft and flexible to minimize trauma to delicate mucosal tissue single-use catheters are sterile 50 catheters per case

- BGHPRU110 10
- BGHPRU112 12
- BGHPRU114 14
- BGHPRU116 16
- BGHPRU118 18

Silicone Elastomer-Coated Two-way Foley Catheters

Our catheters feature permanent silicone-Elastomer coating bonded to latex for a smooth surface, helping minimize encrustation the inert formulation protects against irritation, which allows the catheters to remain in place for a longer time period with comfort two-way catheters are sterile and individually packed caution: Federal (USA) law restricts this device to sale by or on the order of a physician 12 catheters per case

Catheters with 5cc balloon

- BGHPS516 16
- BGHPS518 18
- BGHPS520 20

Catheters with 30cc balloon

- PS620 20

BARD

5cc Coude Bardex Lubricath Latex Foley Catheter (Carson Model)

-Coude tip design facilitates negotiation of the prostatic urethra
-Medium length – olive Coude tip with a single drainage eye
-30cc balloon for post-operative hemostasis (0100LXX)

- BAR0168L14 14Fr, 5cc, 12/cs
- BAR0168L16 16fr, 5cc, 12/cs
- BAR0168L18 18Fr, 5cc, 12/cs
- BAR0168L20 20Fr, 5cc, 12/cs

5cc Coude Bardex Lubricath latex Foley Catheter (Tiemann Model)

-Coude tip design facilitates negotiation of the prostatic urethra
-Medium length – olive Coude tip with a single drainage eye
-Red latex construction for added catheter stiffness and Radiopacity

- BAR0102L16 16Fr, 5cc, 12/cs
- BAR0168L18 18Fr, 5cc, 12/cs

Util-Cath Vinyl Catheters

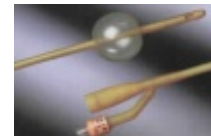
Sterile, whistle tip
BAR015914
14Fr, 6in, 200/cs



Bardex Lubricath Latex Foley Catheters

-Lubricath hydrophilic polymer coating which helps reduce irritation of the urethral mucosa and which helps minimize encrustation

-High-quality Bardex construction
-Single-use, sterile **Short-Round tip w/ two opposing eyes**
BAR0165L12 12fr, 5cc, 12/cs
BAR0165L14 14Fr, 5cc, 12/cs
BAR0165L16 16Fr, 5cc, 12/cs
BAR0165L18 18Fr, 5cc, 12/cs
BAR0165L20 20Fr, 5cc, 12/cs
BAR0165L22 22Fr, 5cc, 12/cs
BAR0165L24 24fr, 5cc, 12/cs



Medium length – Round tip with two staggered eyes

- BAR0166L16 16fr, 30cc, 12/cs
- BAR0166L18 18Fr, 30cc, 12/cs

Bardex All-Silicone 2-Way Foley Catheters

-100% Silicone constructions
-Single-use, sterile 5cc Bardex all-silicone Foley Catheter
-Short length – round tip with two opposing eyes

- BAR165816 16Fr, 5cc, 12/cs

**Bardex Silicone-
Elastomer Coated latex
Foley Catheter**

- Silicone Elastomer coating provides protection against urethral irritation
- 5cc balloon Foley catheter features a short length – round tip and two opposing eyes (0165VxxS)
- Single-use, sterile

BAR0165V16S
16Fr, 5cc, 12/cs

Urethral Catheters

- Semi-rigid construction to facilitate negotiation of the prostatic curve
- Coude olive tip with a single drainage eye located on the top of the prostatic curve
- Raised indicator to identify direction of Coude tip
- Semi-rigid Red Rubber

**Bard Coude Tip Latex
Urethral Catheters**

One Eye (Tiemann Model)

- Single-use, sterile
- BAR010114
14Fr, 12/cs
BAR010116
16Fr, 12/cs
BAR010118
18Fr, 12/cs

Two Eyes (Tiemann Model)

- Coude olive tip with two staggered drainage eyes to provide for higher drainage flow
- Single-use, sterile

BAR120614 14Fr, 12/cs
BAR120616 16Fr, 12/cs

**Bard Red Rubber All-
Purpose Urethral
Catheter**

- Radiopaque red rubber catheter with a round, hollow tip can be used as a Robinson or a Nelaton catheter
- Two opposing drainage eyes
- 16”long
- Single-use, sterile

BAR177714 14Fr,
100/cs
BAR177716 16Fr,
100/cs

Tyco

Healthcare

Kendall



**KENGUARD Silicone-
Coated Foley Catheter**

- Silicone coating provides a smooth exterior shaft, facilitates insertion
- 5cc Balloon, 2-way**
KEN3560 16Fr 17”,
10/cs
KEN3563 18Fr 17”,
10/cs
30cc Balloon, 2-way
KEN3607 18Fr 17”,
10/cs

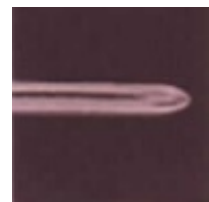


**ULTRAMER Foley
Catheter**

100% silicone Foley catheter Add-A-Foley Tray

KEN8256 10cc Pre-filled syringe, 10/cs

Mentor



Self-Cath Female

Self-Cath 240 is designed for women who practice intermittent self-catheterization self-cath is made of medical grade PVC, then siliconized for friction-free insertion Mentor’s unique fire polished eyelets enhance patient comfort

MNT240 14Fr, 6”
Long, 30/bx



Self-Cath Male

The self-cath family of latex-free catheters offers patients a variety of options for intermittent self-catheterization each

catheter is made with the highest quality standards dedicated to patient comfort and ease of use the Self-Cath Straight Tip is 100% latex-free with fire-polished eyelets and a siliconized surface for smooth insertion

MNT450 14Fr, 16"
Long, Funnel End,
Curved Packaging, 50/bx



Freedom Cath Male External Catheter

Mentor offers a complete line of latex and non latex male external catheters a variety of adhesive styles, sheath lengths and one two-piece configurations are designed to suit a variety of patient needs a complete incontinence system can be achieved by combining a Mentor's male external catheter and Leg Bag Freedom Cath is a self-adhering, one-piece catheter for secure everyday use, combining a comfortable sheath with a wide, watertight adhesive seal

MNT8400 Large,
100/bx

RUSCH



All purpose Robinson/ Nelaton Catheters

Red rubber latex, 2 opposed eyes, X-ray opaque length 40cm (16") Sterile, single use 100/bx

RUS3510-08 8Fr
RUS3510-10 10Fr
RUS3510-12 12Fr
RUS3510-14 14Fr
RUS3510-16 16Fr
RUS3510-18 18Fr
RUS3510-20 20Fr
RUS3510-22 22Fr



Catheters

RUS564000 Cath Word Bartholin Gland Catheter, 5cc Balloon, 5cm Length, Latex 6/bx
RUS220005140 Female ERU Siliconized PVC, 14Fr, 6.5" Single Eye, 50/cs

RUSCH



Foley Catheters

RUS318116 PTFE Teflon Coated, 2 ways, 5cc, 16Fr, 16" Coude

Single Eye Tiemann Model, 10/cs
RUS318118 PTFE Teflon Coated, 2 Way, 5cc, 18Fr, 16" Coude Single Eye Tiemann Model, 10/cs



RUS180705160 Silicone Coated, 2 Way, 5cc, 16Fr, 16" 2 Opposed Eyes, 10/cs
RUS180705180 Silicone Coated, 2 Way, 5cc, 18Fr, 16" 2 Opposed Eyes, 10/cs

Catheter Kits

BARD

Foley Catheter kits

Bard Foley Kits feature high quality Bardex Foley catheters in a selection of coatings: Lubricath hydrophilic polymer or Silicone-Elastomer these coatings provide protection against irritation of the urethral mucosa, help to minimize encrustation and enhance patient comfort
-Each kit contains: -5cc Latex Foley catheter – Prefilled water inflation syringe – 5 gm Lubricant packet
-The Bardex Lubricath Foley Catheter provides for smoother insertion

and enhanced patient comfort through the hydrogel coating's unique ability to absorb 800% of its own volume in fluid, thus creating a hydrophilic "cushion" between the catheter surface and the urethra
 -Single-use, sterile

BAR710012S-26S
 12-26 Fr, Silicone-Elastomer Coated Foley Catheter, 20/cs



Female, Infant and Pediatric Catheter kits

-Closed system reduces the risk of specimen contamination and associated false readings
 -Collection tube is centrifuge-ready
 -Kit includes: pair of vinyl gloves, towel, 3 iodophor swabsticks, 3g lubricant packet and label
 -Single-use, sterile

BAR0035380 8Fr, Basic Female Cath kit/rigid (gloves, swabs, and label), 100/cs
 DAV0035630 5Fr, Infant, Soft, 50/cs
 DAV0035640 8Fr, Pediatric, Soft, 50/cs



FAST-CATH Female Urethral Catheterization Kit
 Kit Contents: Underpad, Vinyl Gloves, PVI swab sticks (3), 15ml Specimen Tube and Flipcap, Sterile Lubricating Jelly, 10gm, Patient Label
 KEN3411 female urethral Cath kit, 25/cs

TRAYS

Allegiance



Basic Foley Catheterization trays With Syringe and PVP

Sterile Foley catheterization trays are available with either a 10 or 30cc printed syringe with sterile water and Luer tip no catheter-included trays include:
 -Outer basin, 1000cc
 -Water-resistant underpad
 -One pair latex gloves
 -Fenestrated drape
 -Three povidone-iodine swab sticks (1% available iodine)
 -Lubricating jelly packet

BGH3T5786A
 W/ 10cc Syringe
 BGH3T5785A
 W/30cc Syringe

Basic Urethral Catheterization Trays

With BZK and Specimen Container

Our sterile catheterization trays are available with a red rubber latex or plastic 14Fr catheter or without catheter trays include:
 -Outer basin, 1200cc
 -Water-resistant underpad
 -One pair latex gloves
 -Fenestrated drape
 -Three Benzalkonium chloride (1:750) swab sticks
 -Lubricant jelly packet
 -Specimen container
 20 trays per case

BGH3T6033 With red rubber latex catheter
 BGH3T6030 With plastic catheter
 BGH3T6031 Without catheter



Universal Foley Catheterization Trays With Hospital Wrap

(Kendall) These convenient sterile trays come with or without catheter 20 tray per case trays include:
 -CSR wrap
 -Anatomically shaped basin, 1200cc
 -Water-resistant absorbent underpad
 -One pair latex exam gloves
 -Fenestrated drape
 -Prepping balls

- Plastic forceps
- 10% povidone-iodine solution, 1oz
- Lubricant jelly, 2.7g
- Sterile specimen container

Trays without catheter

BGHKB4708B

Prefilled sterile water syringe, 10cc

Trays with Elastomer-coated latex Foley catheter

BGHKB4709S

14Fr catheter Prefilled sterile water syringe, 5cc
BGHKB4710S

16Fr catheter Prefilled sterile water syringe, 5cc



Urethral Catheterization trays

20 trays per case trays include:

- Anatomically shaped basin, 1200cc
- Rayon balls
- Removable prep cup
- Water-resistant underpad
- Fenestrated drape
- Specimen container
- One pair of latex gloves
- Lubricating jelly, 2.7g
- 10% povidone-iodine prep solution, 1oz
- Forceps

-Hospital wrap
BGHKB4731B

Tray w/out cath
BGHKB4730B

Tray with 14Fr vinyl catheter
BGHKB4733B

Tray w/ 14Fr red rubber latex catheter



Foley catheterization trays with Antireflux Device drainage Bag and Drain Spout

(Kendall) These sterile trays offer a bag with Splashguard II drain spout that makes drainage easy and helps protect you from contact with potentially hazardous body fluids trays include:

- Patient information pamphlet
- CSR wrap
- Water-resistant absorbent underpad
- One pair latex exam gloves
- Fenestrated drape
- 10% povidone-iodine solution, 1oz
- Prepping balls
- Plastic forceps
- Sterile lubr. jelly, in bellows syringe, 10g
- Prefilled sterile water syringe, 10cc
- Tape strips
- Sterile specimen bottle
- Drainage bag with Mono-Flo Antireflux valve, 2000ml
- Tubing, 11/32" diameter
- Splashguard II drain spout
- Bedsheet clamp

Trays with 100% silicone cath 10 trays/cs

BGHKB5936A
16Fr Cath

W/



Foley Catheterization Trays With Antireflux Device Drainage Bag Drain Spout & Lube Jelly

(Kendall) these sterile catheterization trays offer a bag with Splashguard II drain spout that makes drainage easy and helps protect you from contact with potentially hazardous body fluids a "Wash your Hands" reminder encourages procedural asepsis trays include:

- Patient information pamphlet
- Water-resistant absorbent underpad
- One pair latex exam gloves
- Fenestrated drape
- 10% povidone-iodine solution, 1oz
- Prepping balls
- Plastic forceps
- Sterile lubricating jelly, 5g
- Prefilled sterile water syringe, 10cc
- Tape strips
- Sterile specimen bottle

-Drainage bag with Mono-Flo Antireflux device, 2000ml
 -Tubing, 11/32" diameter
 -Splashguard II drain spout
 -Bedsheet clamp
 10 trays per case
Tray without catheter and CSR wrap
 BGHKB5970
Trays with silicone Elastomer-coated latex catheter and CSR wrap
 BGHKB5974S
 With 14Fr catheter
 BGHKB5976S
 With 16Fr catheter
 BGHKB5978S
 With 18Fr catheter



CURITY MONO-FLO Antireflux Device Foley Tray

Ultramer Foley Catheter
 KEN6014 16Fr, 5cc, 10/cs

100% Silicone Foley Catheter
 KEN6140 16Fr, 5cc, 10/cs



KENGUARD Universal Catheter Tray (Peel Back Lid)

All trays contain (unless otherwise indicated):
 Lidded tray, underpad
 otherwise indicated):
 Lidded tray, underpad, latex gloves, fenestrated drape, PVI solution, prepping balls, forceps, lubricating jelly, graduated basin

KEN3505 30cc Pre-filled Syringe, 20/cs

KENGUARD Universal Catheter Insertion Tray (Peel Back Lid)

All trays contain (unless otherwise indicated):
 Lidded tray, underpad, latex gloves, fenestrated drape, lubricating jelly, and graduated basin

KEN76020 30cc Pre-filled Syringe, BZK Swab Sticks (3), 20/cs



CURITY Urethral Catheter Tray (Open)

All trays feature (unless otherwise indicated):
 CSR wrap, underpad, latex gloves, PVI solution 10%, prepping balls, forceps, lubricating jelly, specimen container

KEN3217 14Fr, ULTRAMER Red Rubber, 20/cs

Tyco

Healthcare

Kendall



KENGUARD Foley Catheterization Tray

Includes #3512 Drain Bag-2000ml capacity, absorbent underpad, latex gloves, fenestrated drape, PVI swab sticks (3), lubricating jelly, 5 gram pouch, CSR wrapped, specimen container with cap, 10cc pre-filled syringe

ADD-A-Foley Tray

KEN3531 30cc Pre-filled Syringe with 3502 Drain Bag

RUSCH



Catheter Tray

RUS75735 urethral Cath Tray w/ Red Rubber Cath, 14Fr (1100ML Basin PVI Swabs), 20/cs

BARD



Bardex Lubricath Foley Tray

-5cc Bardex Lubricath latex foley catheter
 -Bard safe sampling port

- Patented Tamper-Evident seal
- Uro-Prep tray
- Single-use, sterile

BAR899614 14Fr, 10/cs
 BAR899616 16Fr, 10/cs
 BAR899618 18Fr, 10/cs

Bard Lubricath Foley Tray

- 5cc Standard Bard Lubricath latex foley catheter
- Bard safe sampling port
- Patented Tamper-Evident seal
- Uro-prep tray
- Single-use, sterile

BAR898316 16Fr, 10/cs



Bardex Lubricath Foley Tray

- 5cc Bardex Lubricath latex foley catheter
- Bard safe sampling port
- Patented Tamper-Evident seal
- Uro-prep tray
- Single-use, sterile

BAR899716 16Fr, 10/cs



Infection Control Add-A-Foley Tray

- Patented Microbicidal outlet tube

- Complements Bardex I.C. system

BAR899100 10/cs



Bard Bilevel Universal Trays

- Uro-prep Tray with 5g lubricant pack
- Single-use, sterile
- BAR792116 With 16Fr, 5cc Bardex Lubricath Latex Foley Catheter, 20/cs
- BAR781600S With 16Fr, 5cc Bard Silicone-Elastomer Coated Foley Catheter, 20/cs
- BAR782102 With 30cc pre-filled water syringe, 20/cs

Bard Bilevel Urethral Catheterization Procedure Trays

- Basic tray contents:
- Sequence packed in a bilevel configuration, which separates prepping components from catheterization components
- Prepping components include; drape, underpad, latex gloves, forceps, rayon balls, 5g lubricant packet, specimen container, label, povidone-iodine solution
- Single-use, sterile

BAR772100 Basic Tray without either a catheter or a collection bag, 20/cs

Urine Collectors

BARD

Bard Midstreams with Funnel Collector

- Pre-connected large target collection funnel
- Instructions for male and female patients
- Lid protector minimizes contamination potential
- Single-use, sterile fluid path

BAR842801 3oz. container with BZK Wipes, 50/cs

Tyco Healthcare

Kendall



Pediatric Urine Collectors

Non-Sterile
 Ken145500 100ml, 50/bx, 10bx/cs
Sterile
 KEN14501 100ml, 30/bx, 10bx/cs



SAGE Midstream Catch Kits

KEN2110SA Calculi Strainer 100



Commode Specimen Collection System

Ideal collection unit for urine and stool samples or kidney stones Wipe lip and firm base helps prevent splashing, spilling, tipping clearly marked gradients are easy to read

KEN2500SA Commode Specimen Measuring System, 100/cs

KEN4014 CURITY SPECIPAN with clearly marked gradients, 100/cs



PRECISION 24 hour Specimen Container

3000ml capacity lined plastic screw cap minimizes leakage easy-to-ready graduations

KEN5000SA 3000ml, 40/cs



PRECISION Specimen Containers

Complete line of specimen containers allow for sterile specimen collection protects against leakage clearly marked gradients

17000 Series: Polyethylene Screw Caps, Sterile, individually wrapped with screw-on caps

KEN17000 4.5oz Graduated Containers, 200/cs

KEN17080 4.5oz Graduated Containers, Attached ID Label, 100/cs

17000 Series: Polyethylene Screw Caps, Non-Sterile, individually wrapped with screw-on caps

KEN17500 4.5oz Graduated Containers, 400/cs

13000 Series: Snap Caps, Sterile, individually wrapped containers

KEN13000 5oz Graduated Containers, 200/cs

Precision Dynamics



Lil-Katch Pediatric Urine Collector

Versatile design provides a comfortable fit for infant or pediatric use,

male or female medically approved adhesive protects sensitive skin adhesive completely surrounds opening, assuring a leak-proof fit and a clean, usable urine specimen enlarged foam area provides ease of application and comfortable fit, while keeping walls of collector open available sterile or clean, 50/bx capacity 7fl. Oz. 200ml

PRE05001-00MCF Non-Sterile
PRE05002-00MCF Sterile

Premium Plastics



Specimen Collection Commode and Toilet Collection Pan

Securely fitting standard toilets and commodes, this specimen collector's winged edges facilitate application, handling and removal each Gent-L-Pan has easy-to-read graduations in 50cc and 1oz increments up to 800cc's a handy pour permits specimens to be discarded quickly and

safety Bulk (2 bags of 50ea) 100/cs

PP4707 800cc,
100/cs



Calculi Strainer

Fine mesh filters stones or other foreign matter quickly and easily. Strainers fit securely on to 24 hour specimen containers, remaining stable throughout the entire filtering process. Built-in ridge serves as a handle for simple application and removal.

PP4712 White,
25/bg, 4bg/cs



Specimen Containers

6.5oz containers are available in polystyrene and polypropylene. Polystyrene enhances clarity and polypropylene improves durability. Both come with a convenient pour spout for simplified specimen retrieval. Each container is graduated in 10cc (ml) and 5oz increments up to 6.5oz. Printed lids can be

purchased separately or with specimen containers

Polypropylene

PP4629 Specimen Container w/o lid, 20/bg, 25bg/cs

PP4646 Specimen Container w/ Printed Paper Lid, 20/bg, 25bg/cs

Polystyrene

PP4630 Specimen Container w/o Lid, 20/bg, 25bg/cs

PP4647 Specimen Container w/ Printed Paper Lid, 20/bg, 25bg/cs

Specimen Containers w/ Liqua Guard Lid

Available with several packaging options, each specimen container is marked in 10cc (ml) and .25oz increments up to 120cc's. Containers are available with Liqua Guard lids, ensuring leak resistance and making them perfect for transport. Each Liqua Guard lid is engraved and has space for writing date, name, doctor and room number depending on package. On package lids can be purchased separately or with containers.

PP4651 4oz Specimen Container w/o Lid, 20/bg, 25bg/cs

PP4653 4oz. Specimen Container w/ Liqua Guard (Turquoise), 20/bg, 25bg/cs



Specimen Containers W/ Liqua Guard Lid and Label

4 oz sterile specimen container w/ gray Liqua Guard lid & label. Each specimen container is marked in 10cc (ml) and .25oz increments up to 120cc's. Liqua Guard lids ensure leak resistance and make them perfect for transport. Each Liqua Guard lid is engraved and provides ample space for writing the date, name, doctor and room number. Polybagged.

PP4928 4oz. Specimen Container w/ Gray Liqua Guard Lid & Label, 100/cs

Vollrath



Sterile specimen Containers

Vollrath Group's 4oz. specimen container features full-turn screw thread, provides excellent leak-resistant seal, tough, durable inert material. Integrity seal includes

patient ID label on body
 Leak-resistant seal meets
 NCCLS specimen
 handling guidelines for
 primary containers.
 (M29-P, Vol7, No.9).
 Integrity seal indicates
 internal sterility when
 intact. Cup is graduated
 in both ounces and ml on
 two sides

VOL01055 100/cs



**Specimen Containers
 without Cap**

Vollrath Group's non-sterile specimen container without cap is graduated for easy measuring in cc and oz

VOL02053 4.5oz.
 Polypropylene 25/sleeve
 VOL02263 6oz.
 Styrene, 25/sleeve, 500/cs
 VOL02265 6oz.
 Polypropylene, 25/sleeve



**Specimen Containers
 with Cap**

Vollrath Group's screw Cap Specimen Containers are graduated for easy measuring in cc and oz. Area on white cap allows for patient identification. Caps are sleeved and cups are stacked

VOL02051 4.5oz
 Polypropylene, 25/Sleeve
 VOL02052 4.5oz.
 Styrene, 25/Sleeve,
 500/cs



**Measurite Specimen
 Pan With Black
 Graduations**

Vollrath Group's improved injection molded MeasuRite Specimen Pan offers accurate urine output measurements, even at volume as low as 50cc's no need for additional measuring black printed graduations in oz and cc. Ounce graduations are 2,4,6,8,10,12,16,20,24,28,32, cc's graduated at 50, then 100 through 1000 in 100cc increments increased wall thickness to provide improved stability during transport large capacity to reduce the risk of accidental spills and permit urine output measurements up to 1000cc's a molded area on the top front with space to record the doctor, patient, and room number a grooved pour spout for easy and accurate pouring of contents from the front or back. The specimen pan also has a hole for

convenient hanging a wide flange with reinforcing ridges for strength and stability when emptying pan or carrying pan with contents a sturdy, stackable one-piece design that can be nested for compact storage graduations in cc's and oz's have large, angled, easy-to-read numbers

VOL02071 100/cs

Miscellaneous

Allegiance

Catheter plug/Protector
 (Kendall) This catheter plug/protector is sterile and individually packaged 200 plug/protectors per case

BGHKB9660 catheter Plug/Protector

BARD

Urinary Cunningham Clamp

Used to control stress incontinence or dribbling of urine constructed of soft sponge rubber and can be adjusted to fit comfortably reusable, non-sterile

BAR004053 Regular, 2in

Bard Penile Clamps

For catheterization
procedures usage
stainless steel, reusable,
non-sterile

BAR600404 Zipser
Model

DALE



Dale Foley Catheter Holder

Latex-Free. Put an end to the problems associated with tape, and reduce the potential for infection and trauma. Easy to put on and take off, the Dale foley holder features a patented locking device that securely anchors the catheter in place it helps minimize patient tampering, facilitates catheter traction, encourages mobility, and can be moved from leg to leg with total ease the legband is comfortable, due to a unique stretch material that distributes stretch material that distributes compression evenly around the thigh to avoid a tourniquet effect a Velcro fastener engages the band at any point for a custom fit

DAL316 Leg Strap